

Bulletin of the Mineralogical Society of Southern California

Volume 97 Number 1 –January, 2024

The 1,021st meeting of the Mineralogical Society of Southern California

With Knowledge Comes Appreciation

A ZOOM Meeting

January 12, 2024 at 7:30 P.M.

**Program: “An Appraisers Story”
Presented by Dennis & Denise Nelson**

In this Issue:

<i>TITLE</i>	<i>Page</i>
Program: “An Appraisers Story ” Presented by Dennis & Denise Nelson	2
From the Editor: Linda Elsnau	2
From Our President; Angela Guzman	2
Minutes of the December 8, 2023 ZOOM Meeting	5
Dues are Due	7
List of Upcoming MSSC Events	8
MSSC Field Trip:	8
Other Free Things To Do...by Ann Meister	10
MSSC Pacific Micro Mineral Conference	12
Calendar of Events	9
2024 Officers	13
About MSSC	13

Remember: If you change your email or street address, you must let the MSSC Editor and Membership Chair know or we cannot guarantee receipt of future Bulletins

About the Program: “An Appraisers Story” : Presented by: Dennis & Denise Nelson
A very personal account of 39 years spent surrounded by gems, rocks, mines and the fascinating people I met along the way!

Filled with highlights, from far-away travels to the current, more complicated, world of gemology and technology, this presentation will indeed cover all interests. I plan to include a look at the most unusual items I encountered, the surprising histories of some precious objects I was asked to appraise and handle and also share the less pleasant aspects of exposing deceptions.



The combination of gemology and genealogy is a perfect topic for Denise Nelson, who has taught genealogy and spent many years researching and studying the history of gems and jewelry. Denise is a Graduate Gemologist (GIA), an appraiser, consultant and owner of INNER CIRCLE Fine Jewelry and Appraisal Services, Nelson has revealed many interesting facts to her clients in her 30 years in the jewelry business. She’s traveled to 38 countries to research historical jewelry, visit mining areas and buy gemstones, pearls and jewelry for her customers. Nelson also designs jewelry and is a wholesaler to a number of jewelry stores. She is a member of the National Association of Jewelry Appraisers (NAJA) and the Gemmological Association of Great Britain.

How to Join our ZOOM Meetings

MSSC members are automatically included in the invite list each month.

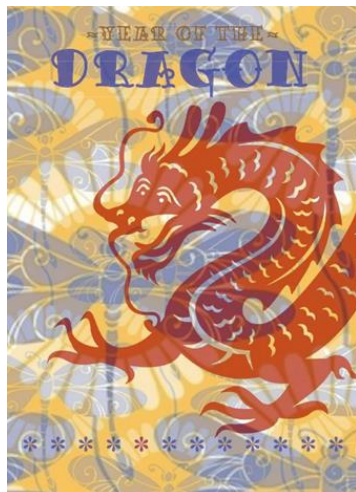
For non MSSC Members who want to join this meeting. You must respond to our Programs chair, Carolyn Seitz at programs@mineralsocal.org no later than the Thursday prior to the next scheduled meeting. Please include “current month ZOOM Meeting” in the subject line of your response. This response date will allow time for us to send you the information needed to participate in the ZOOM meeting and also will allow time to get everything organized.

From the Editor: Linda Elsnau.

Happy 2024 to one and all. May the coming year be all you hope it will be.

This looks to be an interesting year for MSSC with new Program, Membership Chair and aVP position to be filled at the Jan. 7th Board Meeting. Also, if you haven’t renewed you membership, you only have until Feb 15, 2024 to do so.

From Our President, Angie Guzman



**2024
Year of the DRAGON.**

Our wish is that everyone has a healthy and very prosperous year and that you have fun on collecting treks, at mineral shows and other related events.

So, here's to another successful year for the Mineralogical Society of Southern California!

Artwork used by permission from **EberleArts**

Let's look to the future...but first, giving credit where credit is due to the wonderful committee chairs who deserve our gratitude and a special ...

THANKS



Program and Education Chair, Rudy Lopez, will be stepping aside after 14 years. His speakers have been interesting, informative and some are counted as welcomed repeaters. Great work taking charge of MSSC's speaker's bureau, Rudy! As for Education, MSSC's community outreach is evidenced by our participation in various events – focus on youngsters. 2024 promises to include more of the same with Nature Fest at the Natural History Museum of L A County and Roger Clark Park in O.C. Come out to support us, – it's fun!!!

Field Trip Chair, Marek Chorazewicz planned and lead some wonderful excursions in 2023. Lavic jasper, PMC, Tick Canyon, Walt Lombardo's Nevada Mineral & Book Company, a trek to Lead Mountain and up to Owens Valley - all are great sites and everyone who attended the trips had a fun time collecting. Thanks, Marek.

Membership Chair, Cheryl Lopez, will also step down from her duties in order to tend to a very important personal family matter. Thank you and great job, Cheryl. Our best to you. The interim chair will be Carolyn Seitz through February 2024.

Bulletin Editor, Linda Elsnau, continues to publish a fabulous newsletter for us every month. MSSC's newsletter, the Bulletin, always looks good and Linda manages to include her special interesting tidbits! She oversees the newsletter and doesn't hesitate to remind folks that it's really nice, great, in fact, when you submit articles to share with the members and readers. Thank you, Linda.

Web "mistress," Leslie Ogg. This woman works wonders in the realm of "cyber-ness," the maze that dominates our world today. MSSC's website has evolved over time and it looks great! It is easy for users to navigate, and is chock-full of the latest events, reports and links. Leslie is willing to tackle anything we present to her and she always gets the job done in a cool, laid-back manner! Thanks, Leslie!

PMC, the Pacific Micromineral Conference in late January is always a fascinating experience where the atmosphere is a great example of "lovin' what you're doin'". So, pack up your microscope (any old one will do) and join us at **PMC 2024!** Based on past conferences, you won't be disappointed as there are great speakers lined up, lots of sharing, fun show and tell, fabulous auctions and a surprise field trip. Fallbrook is a perfect venue for PMC. Have you never attended? Check MSSC's Bulletin and website for important information about registration details. Thanks to Al Wilkins, Bob Housley and those who help set up and tear down. Hope to see you there!

Carolyn Seitz will become Program Chair in February 2024. She will also stand in as Membership Chair through February 2024, all this in addition to her duties as MSSC Treasurer. Thanks for lending *both* hands, Carolyn. Super!

As you can see, we have a great group of volunteers who take care of the Mineralogical Society of Southern California. These chairs deserve our gratitude and applause. 🙌

If *you* would like to volunteer, please let me know. Check our Bulletin and/or website for contact information. MSSC website: www.mineralsocal.org .

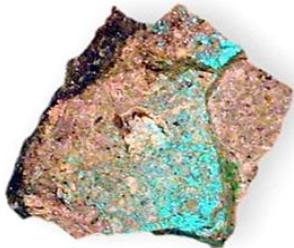


2024 - Here's a quick summary by month. Let me know if I've omitted anything. Keep in mind there will be field trips scheduled periodically, gem and mineral shows and other community events including Nature Fest hosted by Natural History Museum LA County. Each of our ZOOM Membership meeting features a special presentation by a noted mineral aficionado. You won't want to miss these speakers!

January	MSSC Board Meeting ; Membership Meeting; PMC in Fallbrook (includes Sunday field trip)
February	Membership Meeting; Tucson Shows

March	Membership Meeting; (tentative) Installation Banquet
April	MSSC Board Meeting ; Membership Meeting
May	Membership Meeting; CFMS/AFMS combined Gem & Mineral Show and Convention in Ventura, CA
June	Membership Meeting
July	MSSC Board Meeting ; Membership Meeting
August	MSSC Annual Pot Luck Picnic and Silent Auction
September	Membership Meeting
October	MSSC Board Meeting ; Membership Meeting with Nominations Open for Officer/Director 2025; O.C. Ralph Clark Park outreach event
November	Nominations Open AND Election of Officer/Directors 2025; CSFM Convention; New Mexico Symposium
December	Membership Meeting



AJOITE (Ah-ho-ite)	
	
<small>Photo credit Wiktionary</small>	
IMA-CNMNC ID	Aj
Chemical formula	$(K,Na)Cu_7AlSi_9O_{246} \cdot 3H_2O$
Optical Class	Biaxial
Color	Bluish-green; translucent
Streak	Pale greenish-white
Specific Gravity	2.96
Luster	Vitreous
Mohs	3.5
Cleavage	Perfect

Ajoite was first discovered in 1941 by Harry Berman of Harvard University, who was collecting in Ajo, located in Pima County, Arizona. The location mine is the New Cornelia Mine in the Little Ajo Mountains. Berman found *shattuckite*, a dark blue mineral, together with a bluish-green mineral he thought was a new mineral. (Shattuckite is a copper silicate hydroxide.)

In 1944 Berman was killed in a plane crash before the new species was verified. In fact, it was not until 1958 that a former colleague of Berman's, W.T. Schaller and Angelina Vlisidis (both of USGS) were able to confirm the new mineral species. They named it "ajoite" after the locality of discovery by Berman. Then, in 1981, 23 years later, George Chao of Clareton University, Ottawa, Canada, clarified ajoite as triclinic and not monoclinic as had been reported by Schaller and Vlisidis.

According to Wikipedia, ajoite is sought after by many collectors especially when it is found as inclusion(s) in quartz. Ajoite is also found in Maricopa and Wickenburg Counties in AZ and in the Messina District of South Africa.

My introduction to ajoite was at the 2017 Tucson Show by then MSSC Vice President Renee Kraus. Thanks, Renee!

Please view the AJOITE Photo Gallery at Mindat.org for spectacular photos of this wonderful mineral.

END

MINUTES of the December 8, 2023 ZOOM Meeting

Welcome

President Guzman called the meeting to order at 7:32 pm. She welcomed 23 members and guests to the 1,020th Meeting of the Mineralogical Society of Southern California. Angie noted that it was our 43rd ZOOM meeting.

List of Minerals: The October 20, 2023, Newsletter 75 of the IMA Commission on New Minerals, Nomenclature and Classification (IMA-CNMNC) lists 5,978 approved minerals species thus far. (UTL more recent approved listing.)

President’s Message

The CFMS Convention in Visalia was held November 10-12, 2023. A few of the items discussed were Junior Achievement Awards for young collectors up to 18 years of age, Rockhound of the Year Award, Rock & Gem Magazine, a 61% savings offer on print editions and a proposal to make Wiley’s Well part of a National Monument. Look for updates in the Bulletin and/or on our website: www.mineralsocal.org . The next CFMS convention will be in Ventura, CA on May 24-26, 2024. It will be a combined CFMS/AFMS Gem & Mineral Show.

Business:

The president asked for a motion to approve the November 10, 2023, membership meeting minutes as published in the December 2023 Bulletin. A motion to approve the minutes was made by Michael C. and seconded by Carolyn S. Angie asked if there were any additions, corrections or discussion, hearing none she called for a vote. The motion to approve the November 10, 2023, membership minutes was passed on a voice vote.

CONGRATULATIONS to newly elected MSSC Officers and Directors for terms starting January 1, 2024.

President & CFMS Director	Angela Guzman
Vice Pres	Open seat
Secretary	Leslie Ogg
Treasurer	Carolyn Seitz
Director #1 (2024 & 2025)	Pat Caplette
Director #2 (2024 & 2025)	Ahni Dodge

Announcements and Reports

1. MSSC Board Meeting (Angie): Members and Guests are welcome to attend the MSSC Board Meeting on Jan. 7, 2024, at 1:00 p.m. Included on the Agenda will be discussion and possible resolution of vacant Board seats for Vice President and Membership Chair. Contact Rudy Lopez (programs@mineralcocal.org) to be included on the ZOOM invitation list if you would like to attend;
2. Field Trip (Marek)– Information about tomorrow’s Field Trip to Crystal Peak and Haystack in Inyo County Dec. 9-10, 2023. No report from Marek, as he was on his way to the field trip meeting site.
3. Installation Banquet (Rudy) Update and request of number who will attend. Rudy and Angie have been researching possible venues. They checked out “The Only Place in Town” and found it too expensive. The banquet won’t be in February. During the next board meeting we will decide on the place and date. At the next membership meeting in January, we will need members to commit to attend.
4. President Guzman announced that Marcia Goetz has been elected as the CFMS president for 2024.

Program: Program Chair, Rudy Lopez, mentioned that Denise Nelson will be speaking about her life as an appraiser at next month’s meeting. Rudy and Angie will be at the NHM to demonstrate cabbings at an event to showcase two new gem cases.

Tonight’s speaker is Evan Jones talking about paramelaconite from Bisbee Arizona. It is a very rare copper oxide mineral first discovered in Bisbee in the 1880s. The only two specimens that were found were large with euhedral crystals. It was identified as a new species in 1891 and was not found again anywhere until 1962.

It was found in 1961 in Michigan, 2009 Mexico, and 2018 D.R. Congo. The crystals are nowhere as good as the ones from Bisbee.

He described the properties of paramelaconite: It's a copper oxide ($\text{Cu}_2^{(1+)}$, $\text{Cu}_2^{(2+)}\text{O}_3$) tetragonal crystal with strong horizontal striations. It's purplish-black, metallic, opaque crystals have a hardness of 4.5

Almost all paramelaconite is found associated with cuprite. Other mineral associates include goethite, tenorite, connellite, malachite and copper. Paramelaconite is the intermediate species between cuprite ($\text{Cu}_2^{(1+)}\text{O}$) and tenorite ($\text{Cu}^{(2+)}\text{O}$). These two are more stable and thus more common. Paramelaconite alters to tenorite, sometimes as pseudomorphs of tenorite after paramelaconite.

Next, Evan walked us through the crystal structures of cuprite, tenorite, and paramelaconite. All copper in cuprite is in the +1 state and this causes it to form isometric crystals. The copper in paramelaconite is in the +1 and +2 state, so it forms tetragonal crystals. The third copper oxide, tenorite, forms monoclinic crystals because it's copper is in the +2 state. Due to the mixed oxidation states in paramelaconite, it's chemical and physical properties have been studied intensely. It shows potential as a high temperature superconductor and a solid-state catalyst.

Now on to the history of these rare specimens. Pennsylvania mineral dealer A.E. Foote purchased the two paramelaconite specimens in Bisbee in 1890; he suspected they were a new mineral species. He immediately sold the two specimens for \$50 each to Clarence S. Bement, a pre-eminent mineral collector in Philadelphia. The Bement collection was donated to the American Museum of Natural History (AMNH) by J.P. Morgan, who had purchased the collection in 1890; the collection included the two paramelaconites. Currently the better specimen is on display at the AMNH in New York, and the other is on display at the Smithsonian in Washington D.C.

In 1894, while Bement still owned the specimens, he loaned them to George Koenig, a professor of mineralogy at the U. of Pennsylvania. Koenig determined that they were a new copper oxide mineral. He named it paramelaconite which means "near tenorite" (tenorite was called melaconite at that time). Koenig published his work in the Proceedings of the National Academy of Sciences, Philadelphia in 1891. He included a beautiful pen and ink drawing of one specimen. As Evan said, the days of hand drawings of minerals are long gone.

In 1940, Dr. Clifford Frondel verified that paramelaconite is a valid species, with a tetragonal crystal shape. He also verified the chemical formula.

In 1962, paramelaconite was found in the Algomah mine in Michigan. The 5cm crystals were rough and pitted, and were locked in chrysocolla. Upon study it was determined that most of the paramelaconite in the crystals had altered to tenorite.

Evan then referred to a portion of a mineral sales catalog from 1962, a line in the ad for paramelaconite states that there were **three** specimens from Bisbee! An assistant Michigan Tech professor named Sid Williams had studied the Algomah mine paramelaconites and compared them to a third crystal which was in a collection at Michigan Tech. This "small, superb group of crystals associated with connellite and malachite" is no longer in the collection and it's whereabouts are unknown.

The story now moves to California, where our own past MSSC member and president Rock Currier acquired a fourth specimen of Bisbee paramelaconite. He got it in a trade with Bryn Mawr College in Pennsylvania. Rock's specimen came from the collection of George Vaux, who was the nephew of William S. Vaux (vauxite is named after him). The family donated the collection to the school in 1957. The back of the specimen label indicates that it was purchased from A.E. Foote, the original owner of the two specimens, in 1894. In 1978, Rock sold his paramelaconite to buy a hi-fi stereo system! The paramelaconite was bought by Jim Minette, another southern California collector. After Minette's death in 2002, his collection was sold at Tucson in 2008. Evan Jones bought the Vaux melaconite from the collection. It is the only significant Bisbee melaconite in private hands.

More paramelaconite was discovered in 2009, at the Ojuela mine in Mapimi, Durango, Mexico. It was similar to the Michigan mine specimens, with most of the paramelaconite altered to tenorite. The paramelaconite was found in a small pod of cuprite ore along with malachite and claringbullite.

Then in 2018 paramelaconite was discovered in the Democratic Republic of Congo. Platy crystals of paramelaconite were found in cuprite ore; they were associated with buttgenbachite, gerhardtite, and rouaite (nitrates of copper).

Another question; what mine in Bisbee produced the paramelaconite crystals? The mine in Bisbee that produced the most specimens at the time of A.E. Foote's purchase (late 1880s) was the Czar mine. A.E. Foote had purchased the specimens in the assay office of the Czar mine.

As to the question "How many Bisbee paramelaconites are out there?" Evan showed us a page from A.E. Foote's 1891 sales catalog (a year after he sold the two specimens to Bement). It states that he has for sale "fine, large crystals "of a new mineral, paramelaconite. This implies he had enough to sell. Evan's mission is to track down as many as he can. He has found single crystals of paramelaconite in the collection of Dick Thomssen and at Michigan Tech, there is also a cluster of crystals that resides at the School of Mines in Paris. It was purchased in 1896, likely from A.E. Foote.

During the Q&A, Tony Kampf said that the LAMNH has a vial of Bisbee paramelaconite and also crystals from Michigan and the D.R. Congo.

Last Words:

- (a) The next membership meeting is Friday, January 12, 2024, and will include an interesting presentation by Denise Nelson; She will talk about her life and adventures as an appraiser.
- (b) The Next board meeting will be Sunday, January 7, 2024, at 1pm via ZOOM. All are welcome to attend, email Rudy (programs@mineralcocal.org) to get the ZOOM invite.
- (c) The information on the [57th Pacific Micromineral Conference](#) is available on the website.

Adjournment: President Guzman adjourned the meeting at 8:32 pm

Respectfully submitted, Leslie Ogg, MSSC Secretary

**If you haven't already paid your MSSC Membership Dues, Remember,
DUES ARE DUE!**

Renewal Deadline is February 15, 2024 to be included in the MSSC Roster. And if you have not renewed, you will no longer receive your MSSC Bulletin

It's Time to Renew your MSSC Membership!

Don't miss the monthly bulletins, Zoom Meetings, or upcoming Field trips.
Send your dues to:

MSSC
13781 Alderwood Lane #22J
Seal Beach, CA 90740-3993
Or ----Use PayPal

\$30.00 INDIVIDUAL
\$40.00 Family
\$35.00 additional for USPS Delivered Bulletin

If your information has changed since last year (email, address, phone) please complete a new Memberships form with new information.

Any Questions, please contact Carolyn at treasurer@mineralsocal.org

List of Upcoming MSSC Events : Mark your Calender!

Event	Date	Comments / Scheduled Program (if known)
Meeting Dates:	ZOOM February 9, 2024	Jeff Scovil; TBA
	ZOOM March 8, 2024	Jim & Gail Spann; TBA
	ZOOM April 12, 2024	Erin Delventhal & Phil Simmons; TBA
Board Meeting	ZOOM January 7, 2024	ZOOM at 1:00 PM
Micro=Conference	JANUARY 26 & 27, 2024	See full info in this Bulletin
Field Trip	JANUARY 20, 2024	Big Bertha Mine near Quartzsite, AZ

Note: Dates and programs shown above are subject to change. Check your bulletins to confirm final information each month.

The Ride Share Listing is being temporarily discontinued until such time as MSSC starts holding in-person meetings again.

MSSC Field Trip: Marek Chorazewicz (marekc.mobile@gmail.com)

Hi mineral friends!

Mark your calendars for the next classic rockhounding location, the Big Bertha Mine near Quartzsite, AZ, on Saturday, Jan 20, 2024 (weather permitting).

We will meet on Saturday, the 20th, in Quartzsite, at a dirt lot across Love's Travel Stop on Dome Rock Rd West, immediately south of Exit 17 from I-10 (Route 95 exit to Yuma). Here are the GPS coordinates of the meeting place: 33°39'29.8"N 114°14'29.3"W (33.6583, -114.2415). The Google Maps link:

<https://maps.app.goo.gl/JQErUAV9fKfPhtgD9>.



It's 241 miles from Pasadena. The driving time is about 4 hours but could get worse due to construction and lane closures on I-10, so check the traffic before leaving. We will drive on asphalt for about 4 miles until we get to the pipeline road, then 2 miles on dirt roads, mostly flat and dusty. Most cars will make it without issues; no 4WD or high clearance will be necessary. There might be a few new washouts on the way, so we will need to be careful.

The mine on the side of the hill is famous for beautiful **hematite** blades on **quartz**, many centimeters long, and if lucky, you can find minute gemmy red grains of **rutile** between the blades. Also, it is a location for tetragonal pyramids of rare **zunyite**, an aluminum silicate halide, in the matrix of clear-to-beige **pyrophyllite**, a **talc** relative. Generations of rockhounds have picked over the material, but it is still there. The path to the mine and some areas at the mine are a bit steep, so be mindful when walking or climbing. See the Mindat location for more info: <https://www.mindat.org/loc-21738.html>. However, do not rely on the location from Mindat as it is way off, and it is not on the topo maps either.

Please remember to renew your MSSC membership for 2024 before the trip; I'll be checking onsite. Doing payments and paperwork in the morning will waste collecting time.

The weather forecast is not yet available for the trip date, so I'll be on the lookout for heavy rain in case we have to reschedule. If there is no rain, the Quartzsite area is usually quite pleasant at that time of the year. After the trip, the participants might want to check out the ongoing Quartzsite rock shows like Powwow.

Hope to see you there! Marek C

With Knowledge Comes Appreciation

OTHER FREE THINGS TO DO...by Ann Meister

The **Watson Lecture** is on Wednesday, **January 31** at 7:30 PM at Caltech's Beckman Auditorium. The speaker is Bethany Ehlmann, professor of planetary science and director of the Keck Institute for Space Studies, Caltech. The title is "**Lunar Trailblazer: The Pioneering Small Satellite Set to Investigate Water on the Moon.**" The Lunar Trailblazer mission is the first of a new type of NASA mission—small satellites for planetary exploration—and follows up on one of the most surprising discoveries of the 2000s: water on the Moon. In this talk, the mission's principal investigator, Bethany Ehlmann, professor of planetary science and director of the Keck Institute for Space Studies, will explore Lunar Trailblazer's pathbreaking goals. From a 100-kilometer-altitude polar orbit, the Lunar Trailblazer spacecraft is designed to simultaneously map the composition, temperature, and physical properties of the lunar surface in order to determine the form, abundance, and distribution of water on the Moon. This includes peering into the permanently shadowed regions within impact craters at the lunar poles to provide maps of lunar water ice. In doing so, Lunar Trailblazer will collect essential data for future human and robotic exploration of the Moon. Mission operations, which will be supported by scientists and engineers at JPL, will be conducted from the Caltech campus by IPAC with assistance from undergraduates at Caltech and Pasadena City College. Lunar Trailblazer is scheduled to launch as a rideshare with the Intuitive Machines IM-2 lander, a SpaceX launch in mid-2024. *Find more past Watson Lectures on [Caltech's YouTube channel](#).*

The **UCLA Meteorite Gallery** is open. Check the website for hours. The monthly lecture will be presented via Zoom on Sunday, **January 21** at 2:30 PM. The speaker and the title are not yet available. To join via Zoom, click [here](#). If clicking the link does not work, please open your zoom app and enter the meeting ID: 983 0252 9304. Then click "join meeting in progress" (there is no password). If you need further instructions on how to join our meeting via Zoom, click [here](#) or contact Kevin McKeegan at mckeegan@epss.ucla.edu. This meeting is only accessible through the desktop and mobile client. Visit the website and check on events and videos and other neat things about meteorites, go to <https://meteorites.ucla.edu>

The **Von Kármán Lecture** is on Thursday, **January ??** at 7:00 PM. Available live on YouTube at [NASA Jet Propulsion Laboratory - YouTube](#). Date, speaker, and topic were not available at time of publication. Check website for information and past lectures [Lecture Series \(nasa.gov\)](#).

MSSC Advertisement Policy:			
Mineral-related ads are allowable in the MSSC bulletin. Below is the price per month			
	Business Card	\$5.00	
	1/3 page	\$10.00	
	1/2 page	\$20.00	
	Full Page	\$35.00	
<p>In addition, any advertiser who purchases 12 months of space in advance will receive a discount of 12 months for the price of 10 months. The copy for the ads should be mailed to the editor at bulletin@mineralsocal.org and the payment should be sent to the MSSC Treasurer 13781 Alderwood Lane, #22-J, Seal Beach, CA 90740</p>			

Happy New Year to One and All !

**The Mineralogical Society of Southern California
Proudly Presents the 57th annual Pacific Micro Mineral Conference
January 26 and 27 at
The Fallbrook Mineral Museum
123 W. Alvarado St., Fallbrook, CA**

FRIDAY, January 26

3:00-6:00 PM: On-site Registration, greeting friends, setting up scopes, \$1 sales table opens.

6:00-7:00 PM: Dinner (on your own) Several cafes and a great Mexican restaurant are within a few blocks of the museum.

7:00-8:00 PM: Evening talk by Herwig Pelckmans “**Zingy Zircon**”

SATURDAY, January 27

8:00-9:00 AM: Doors open, on-site Registration, filling give-away and sales tables.

10:00 AM: Welcome, Special Announcements **and** Morning speaker introduction

10:15-11:30 AM: Morning Presentation by Paul Adams “**Nevada Revisited: Recent trips to Yerington and Candelaria.**”

Noon – Lunch (on your own)

1:30 PM: VERBAL AUCTION of donated specimens

3:00 PM: SILENT AUCTION of donated specimens, mineralogical books/magazines, maps, etc.

3:15-4:30 PM: Afternoon Presentation by Dan Evanich “**Minerals from the Mines of Butte, Montana**”

4:30-6:00 PM: Microscope time, scouting the give-away and sales tables.

6:00-7:00: Dinner (on your own)

7:00 PM: Contributed talks and Mineral Photos

SUNDAY Field Trip, January 28

People planning to participate in the field trip should probably plan to stay in Barstow, rather than Fallbrook on Saturday night. We will meet Sunday morning at 9 am at a central location in Barstow and either collect at a nearby mine, continue to Otto Mountain, or continue farther to the Singer Mine at Goodsprings NV.

Now is a very good time to make your advance registration for the 2024 Pacific Micro Mineral Conference. The registration fee is \$20 before the conference and \$25 at the door. If you have question you can contact rhousley@its.caltech.edu. Continue below for a Registration Form, driving directions and list of accommodations within 10 miles of the museum. When registering please provide the names and current city of residence of all in your party. We like to have a personalized name-tag waiting for everyone in attendance. And please bring a couple of nice micro mineral specimens for the verbal auction and any unwanted mineralogical books, magazine, photo equipment or larger mineral specimens for the silent auction table. Hope to see you there!

LOCATION

Fallbrook Mineral Museum, 123 W. Alvarado St., Fallbrook, CA 92028 (760) 728-1130

From I-15 south take Exit 51 toward Mission Rd. for 0.3 mile

Turn right onto Old Hwy. 395 for 177 feet, then quick right onto E. Mission Rd. for 4.4 miles

Turn left onto N. Brandon Rd. for 0.2 mile.

Turn right onto E. Alvarado St. & proceed for 0.4 mile. Destination is on your right. Parking is on the left.

NEARBY ACCOMMODATIONS

Motels listed in order of proximity to the Fallbrook Museum:

Name --- number of stars

Miles to Fallbrook City Center --- Rating/10

--- Price as low as ____

These listings are about 5 years out of date.

Fallbrook Country Inn **

1.0 miles --- 6.7 --- \$49

1425 S. Mission Rd., Fallbrook

(760) 728-1114

Econo Lodge Inn & Suites Fallbrook **

1.1 miles --- 7.5 --- \$49

1608 S. Mission Rd., Fallbrook

(760) 723-1127

Rodeway Inn Fallbrook **

1.2 miles --- 6.8 --- \$39

1634 S. Mission Rd., Fallbrook

(760) 728-6174

Pala Mesa Resort ***

4.7 miles --- 7.2 --- \$99

2001 Old Hwy. 395, Fallbrook

(760) 728-5881

Quality Inn Fallbrook I-15 **

5.3 miles --- 6.2 --- \$60

3135 Old Hwy. 395, Fallbrook

(760) 723-2888

Temecula Creek Inn ***

8.8 miles --- 7.9 --- \$199

44501 Rainbow Canyon Rd., Temecula

(844) 791-6073

Ramada Temecula Old Town **

9.3 miles --- 7.6 --- \$78

28980 Old Town Front St., Temecula

(951) 676-8770

Pechanga Resort & Casino **

9.4 miles --- 8.3 --- \$199

45000 Pechanga Parkway, Temecula

(951) 693-1819

Rodeway Inn Temecula **

9.6 miles --- 6.3 --- \$70

28718 Old Town Front St., Temecula

(951) 676-4833

Motel 6 Temecula *

9.8 miles --- 6.8 --- \$60

41900 Moreno Rd., Temecula

(951) 676-7199

Rancho California Inn **

9.8 miles --- 7.4 --- \$70

41873 Moreno Rd., Temecula

(951) 676-5700

SpringHill Suites by Marriott Temecula Valley Wine Country ***

9.9 miles --- 8.5 --- \$104

28220 Jefferson Ave., Temecula

(951) 699-4477

Tuscany Hills Retreat ***

9.9 miles --- 7.2 --- \$99

29850 Circle R Way, Escondido

(760) 749-1290

Hampton Inn & Suites Temecula **

9.9 miles --- 8.8 - \$119

28190 Jefferson Ave.

(951) 506-2331

Advance Registration Form

PACIFIC MICRO MINERAL CONFERENCE

January 26 and 27, 2024 (Field trip on Sunday, January 28)

Registration \$20.00 per person by mail, \$25 at the door

No. of people _____ **Amount** _____

Names – City of Residence

All meals are on your own this year – a few cafes and a great Mexican restaurant within walking distance of the museum.

Field Trip on Sunday (no charge)

Are you interested in attending the field trip? Yes _____ No _____

Number of participants in your party _____

There will be a sign-up list for the field trip at the registration desk; please include a cell phone number for ease of contact with your party before and during the field trip.

**Send Payment to:
Al Wilkins, PMC Chair
23202 Via Celeste
Coto de Caza, CA 92679-3919
Make checks payable to MSSC.**

I plan to present a short, contributed talk _____

The topic will be _____

Approximate length of talk in minutes _____ Format [flash drive (preferred), DVD, slides, etc.)

Calendar of Events:

Only S. CA shows are listed here. Other CFMS Club shows can be found at: <http://www.cfmsinc.org/>

2024

January 20-21, 2024 – Exeter, CA
Tule Gem and Mineral Society
Exeter Veterans Memorial Building, 324 North
Kaweah Ave., Exeter, CA 93221
Hours: Sat 10 AM – 5 PM, Sun 10 AM – 4 PM
2024 Gemboree Website: <http://www.tulegem.com>

March 2-3, 2024 – Ventura, CA
Ventura Gem & Mineral Society
Ventura Co. Fairgrounds, 10 W. Harbor Blvd.,
Ventura CA
Hours: Saturday 10 AM – 5 PM, Sunday 10 AM-4PM
Website: <http://www.vgms.org>

2024 MSSC Officers:

OFFICERS		
President	Angie Guzman	president@mineralsocal.org
Vice President	Vacant: to be filled at Jan Board Meeting	vicepresident@mineralsocal.org
Secretary	Leslie Ogg	secretary@mineralsocal.org
Treasurer	Carolyn Seitz	treasurer@mineralsocal.org
CFMS Director	Angie Guzman	
Past President	George Rossman	
DIRECTORS		
2023--2024	Simona Cianciulli	
2023--2024	David Lesperance	
2023--2024	Pat Stevens	
2024-2025	Pat Caplette	
2024-2025	Ahni Dodge	
COMMITTEE CHAIRS		
Bulletin Editor	Linda Elsnau	bulletin@mineralsocal.org
Field Trip	Marek Chorazewicz	
Historian	Ann Meister	
Hospitality	Laura Davis	
Membership	Carolyn Seitz	membership@mineralsocal.org
Micro Mount Conf. Chair	Al Wilkins	
Program and Education	Carolyn Seitz	programs@mineralsocal.org
Webmaster	Leslie Ogg	webmaster@mineralsocal.org

About the Mineralogical Society of Southern California

Organized in 1931, the Mineralogical Society of Southern California, Inc. is the oldest mineralogical society in the western United States. The MSSC is a member of the California Federation of Mineralogical Societies, and is dedicated to the dissemination of general knowledge of the mineralogical and related earth sciences through the study of mineral specimens. We are a scientific non-profit organization that actively supports those endeavors through public outreach, field study and related programs. The Bulletin of the Mineralogical Society of Southern California is the official publication of the Mineralogical Society of Southern California, Inc.

The MSSC meetings are usually held the second Friday of each month, January, February and August excepted, at 7:30 p.m. in Building E, Room 220, Pasadena City College, 1570 E Colorado Boulevard, Pasadena, California. However, due to current health considerations, MSSC meetings are held via ZOOM conferencing until further notice. The annual Installation Banquet is held in January, and the annual Picnic and Swap Meeting is held in August. Due to PCC holidays, meetings may vary. Check the Society website for details.

The Society also sponsors the annual Pacific Micro mount Symposium held at the Fallbrook Mineral Museum during the last weekend of January.

Annual Membership dues for the MSSC are \$30.00 for an individual membership, \$40.00 for a family membership. Bulletins are delivered by email, there is an additional annual fee if you prefer paper bulletins mailed to your address. The Society's contact information:

Mineralogical Society of Southern California

13781 Alderwood Lane, #22-J, Seal Beach, CA 90740

E-mail: treasurer@mineralsocal.org

Website: www.mineralsocal.org **The Mineralogical Society of California, Inc.**

Permission to reproduce and distribute original material published herein, in whole or in part, for non-commercial purposes, is hereby granted provided the sense or meaning of the material is not changed, the editor is notified, and the author's notice of copyright is retained. **All other articles used in our bulletins are with the specific permission of the author. Permission to use these documents must be obtained from the author for each use.**

DISCLAIMER: The Mineralogical Society of Southern California, Inc. is not responsible, cannot be held responsible or liable for any person's injuries, damages or loss of property at or traveling to or from any general meeting, board meeting, open house, field trip, annual show or any other MSSC event..

MSSC Bulletin Editor
3630 Encinal Ave.
Glendale, CA 91214-2415

To:



**With Knowledge Comes
Appreciation**

**Your MSSC
Bulletin Is
Here!**



dreamstime.com