

Bulletin of the Mineralogical Society of Southern California

Volume 90 Number 12 - December, 2017

The 951st meeting of the Mineralogical Society of Southern California

With Knowledge Comes Appreciation

December 8th, 2017 at 7:30 P.M.

**Pasadena City College
Geology Department, E-Building, Room 220
1570 E Colorado Blvd., Pasadena**

Program : The Periodic Table, Its Story & Its Significance Presented by Dr. Eric Scerri, UCLA, Department of Chemistry & Biochemistry

In this Issue:

<i>TITLE</i>	<i>Page</i>
Program: The Periodic Table, Its Story & Its Significance Presented by Dr. Eric Scerri	2
From the Editor: Linda Elsnau	2
Meanderings from the President: Ann Meister	2
Minutes of the November 10, 2017 Meeting	3
List of Upcoming MSSC Events	7
Back to School with Dr. Bruce Carter: Rudy Lopez	7
Annual Banquet and Silent Auction	9
MSSC's 52nd Annual Pacific Micromount Conference: Linda Elsnau	10
MSSC's Day at OC Parks Family Festival: Rudy Lopez	10
Ride Share Listing	11
Calendar of Events	12
2017 Officers	13
About MSSC	13
Attached: PMC 2018 Info & Registration Form	

Remember: If you change your email or street address, you must let the MSSC Editor and Membership Chair know or we cannot guarantee receipt of future Bulletins

About the Program: The Periodic Table, Its Story & Its Significance Presented by Dr. Eric Scerri, UCLA, Department of Chemistry & Biochemistry

There has been a veritable explosion of interest in the periodic table and the elements in popular science and popular culture generally. For example, major advertising campaigns by clothes outlets, J. Crew and The Gap. Also, the highly successful TV series, *Breaking Bad*, which ran to four seasons. All have used the periodic table and the symbols of elements to good effect.

Dr. Scerri is the author of what has been described as the definitive book on the periodic table, published by Oxford University Press and with the same title as his lecture. The book especially focuses on the historical development of the periodic table and the status of this knowledge in modern science. He has also written “A Very Short Introduction to the Periodic Table”, a more popular and condensed version of the initial book. In addition, he wrote “A Tale of Seven Elements”, and “30-second Elements”, two books written for a general audience.

The lecture begins with a brief survey of how the ancient Greek philosophers thought about the elements, moving on to the chemical revolution of Lavoisier at which time a new understanding of the concept of ‘element’ was reached.

John Dalton’s atomic theory and the assignment of atomic weights to each of the elements was the first step in attempts to compare the elements and to order them into a coherent framework, namely the periodic table.

The discovery of the periodic table took place in the 1860s and was carried out independently by at least six individuals in different countries around the world.

The development of physics led to an understanding of the structure of the atom and an explanation of why the periodic table has the particular form that it has. This knowledge continues to develop as does the discovery of new elements with ever higher atomic numbers. Dr Scerri recently had an article published in *Scientific American* on the topic of the ‘Cracks in the Periodic Table’ that considers the status of the periodic table and super-heavy elements.

From the Editor:

Happy Holidays to all! Time sure flies when you are having fun. I can’t believe another year has come and gone so fast. I think the older I get, the faster time flies -- remember when summers lasted forever!

2018 looks to be an interesting year with a new President and Vice President for MSSC. Thank you Ann for your 7 years of service and to George Rossman for moving into the position. Welcome to the team to Renee Kraus as our new VP. Also, thank you to all of the other officers that are continuing in their positions. Perhaps 2019 will find willing replacements for these other long-term officers and chairmen. We have a busy time ahead, a JTI visit, a Board Meeting, a General Meeting; the holidays and next month, a Banquet and a Micro Mineral Conference. Rest between when you can! Linda Elsnau

MEANDERINGS FROM THE PRESIDENT by Ann Meister

JTI OPEN HOUSE! Mark your calendar. The official invitation for MSSC to the JTI Open House is on Saturday, **December 2** from 10 AM to 4 PM. If you can’t make it on Dec. 2nd, December 9 is the last open house for this year. I’ve been told that you can “quietly merge” with the other groups invited on that date.

Please RSVP to me at president@mineralsocal.org

After seven years as President and at this season of reflection and thankfulness, I would like to thank everyone in the MSSC who has contributed to the Society this year, for the past seven years, and throughout its history. I’m not even going to try to name everyone who I hold with special thanks in my heart as it would take up the entire *Bulletin*. We are a successful organization because you all contribute in your own way. I appreciated every little thing as well as all the big things. The new officers will be installed at the January Banquet.

I hope Santa Claus is good to you this year and that your New Year's celebration is glorious.

OTHER (FREE) THINGS TO DO...

For a more artistic, rather than scientific, view of rocks and minerals come to The Huntington Gardens and Library on **December 26-30**, 10 AM to 5 PM for the California Aiseki Kai 28th annual show featuring outstanding examples of *sui-seki* and other viewing stones. Practiced in Asia for centuries and gaining popularity around the world, the art of viewing stones invites contemplation of the subtle, often fanciful forms that have been shaped by nature, the elements, and time. The show is in the Brody Botanical Center. A related display presented by the American Viewing Stone Resource Center will be on view during the same dates in the Japanese Garden's Ikebana House. Unfortunately, this is not a free event as it requires the Huntington entry fee.

The **Watson Lecture** at Caltech's Beckman Auditorium is on **December 6** at 8 PM. Aaron D. Ames presents "Toward the Robots of Science Fiction."

The **Von Kármán Lecture** on **December 14 and 15** is titled "Weight Watching from Space: Tracking Earth's water cycle with GRACE Follow-On" by Felix Landerer. GRACE stands for Gravity Recovery and Climate Experiment has provided Earth scientists with an unprecedented view of changes in our global water cycle, and allowed precise determination of sea-level rise, polar ice-cap mass loss in Greenland and Antarctica, or large-scale water storage changes over land. The twin satellites of the GRACE Follow-On mission, scheduled for launch in early 2018, will continue this extremely successful work of tracking Earth's water movement, while testing a new laser technology designed to improve the already remarkable precision of its microwave measurement system. Thursday is at the Von Kármán Auditorium at JPL and Friday is at the Vosloh Forum at PCC. Start time is 7 PM.

The **UCLA Meteorite Gallery** is going dark for December. Next event on January 14. Details next month

MINUTES of the November 10, 2017 Meeting

On Friday, November 10, 2017, the 950th Membership Meeting of the Mineralogical Society of Southern California (MSSC) was called to order at 7:32 p.m. by President Ann Meister. Ann welcomed all and asked if there were any guests. There were no guests. Thanks to Renee for the festive balloons!

Regular Business

MINUTES: Ann Meister asked for any corrections or additions to the MINUTES of the October 2017 Minutes as posted in the November 2017 *Bulletin*. Ann had a correction in the slate of Officers candidates for the next term. Director Pat Caplette was listed as Geoff Caplette. Ann asked if there were any other corrections or additions and hearing none, called for a **motion to approve the corrected Minutes for the October 2017 Membership Meeting**. The Motion was made by Rudy and seconded by Jim.

Bulletin Editor Linda Elsnau sends the following message: The *Bulletin* submissions deadline is November 22, 2017. Your article contributions are well appreciated.

Jewel Tunnel Imports (JTI) Open House is Saturday, December 2, 2017, from 10 am – 4 pm. However, if you can't make it on our invitation date, you may "quietly merge" on an alternative date, (December 9, 2017). In any case, please let Ann Meister know if you will be going and on which date.

Pacific Micromount Conference (PMC) will be held in the Fallbrook Museum on January 26, 27 and 28, 2018. There are plenty of restaurants and fast-food places nearby, but coffee will be available. Check the *Bulletin* for information or contact Bob Housley.

Elections: Nominations are still open. Thus far, the proposed candidate slate is as follows:

President	Dr. George Rossman
Vice President	Renee Kraus
Treasurer	Jim Kusely
Secretary	Angela Guzman

CFMS Director JoAnna Ritchey

2018-2019 term Directors:

Director Pat Caplette

Director Pat Stevens

Ann Meister called for any more nominations and seeing none, called for a **motion to close the nominations**. Motion made by George Rossman and seconded by Laura Davis. The vote was called and the motion to close the nominations **passed unanimously**.

Ann Meister called for a **motion to elect the slate of officers by acclamation**. The motion was made by Angela Guzman and seconded by Bruce Carter. The vote to elect the slate of officer by acclamation was called and **passed unanimously**.

CONGRATULATIONS TO THE NEWLY ELECTED OFFICERS AND DIRECTORS! Special thanks to Dr. George Rossman from Ann Meister was expressed and accepted.

[Secretary's Note: Geoff Caplette will retire as Past President and Ann Meister will become the new Past President. The Installation of Officers will be conducted at the annual banquet to be held on January 13, 2018. MSSC's major fund raiser, silent auction, will also be featured. Bring your "apatite" and your "silver"!]

Announcements

West Coast Gem & Mineral Show is this weekend in Santa Ana. Geoff Caplette a vendor again this year, says the attendance is down from last year.

Von Kármán lecture will be 11/16 and 11/17 at JPL and PCC respectively. The topic is, "Mars 2020, or There and Back Again." The speaker will be Ken Williford, Deputy Project Scientist for Mars 2020 and, he directs JPL's Astrobiogeochemistry Laboratory.

[Note: For more information: www.jpl.nasa.gov/events/lectures.php]

Watson lecture at CalTech will be 11/15. The topic is "The Grand Tour: Exploring Planets outside the Solar System" presented by Heather Knutson. [Note: For more information: www.caltech.edu/public-events-series]

Show & Tell

Dr. Bob Housley had the opportunity to visit the Top Notch agate mining claim with the Barstow group. Top Notch's mined agate is quality agate that has been sold to dealers and other vendors. Bob, ever on the hunt for new opportunities to collect, did bring a few agate specimens for Show and Tell. And, he did find out where the nearby fluorite mine is located. The fluorite mine crystals found there are purple and green. *[Secy Note: Bob, let me know when you want to go, I'll see if I can go with you!]*

Program Chair

Rudy Lopez, Program Chair, reported on the most recent event MSSC took part in with Cooper Center. The event was on October 14th and was held at Clark Park in Buena Park. Our exhibits included rocks and minerals extraordinaire, cabbings demonstrations (Rudy and Angie), wire wrapping sessions (taught by Renee), and the kids giveaway table of 350+ bags of minerals, rocks and seaside agate (Cheryl and Leslie). There was a good turn out by the local community, a lot of interest in what we had to offer, and our booth was the busiest of all the exhibitors. We had a good time with the folks and kids. Renee even got to explore the next booth over and handle a rescue snake. We are invited back for next year's event giving us another opportunity to keep Mineralogical Society of Southern California in the fore.

Door Prize Drawing

The program will take us out of the meeting room tonight, so the drawing is moved to this segment – before the program. The drawing was won by Rudy Lopez. Congratulations!

Program

Rudy introduced Dr. Bruce Carter, who agreed to give the Mineralogical Society of Southern California (MSSC) a tour of the Geology Museum located right here at Pasadena City College, in the very building where we hold our regular membership meetings. Thanks to Dr. Carter for being willing to provide this tour.

Dr. Bruce Carter, a CalTech graduate, did his Ph.D. work on the Precambrian anorthosite-gabbro-syenite body of the western San Gabriel Mountains. He also worked on offset history of the Mojave Garlock Fault and, on the origin and migration of magmas in ultramafic rocks of the Trinity peridotite of northern California. In 1971, Bruce began teaching geology at Pasadena City College where he became Dean of Natural Sciences Division for 18 years before his 2005 retirement. While at PCC, he also taught mineralogy and petrology, oceanography, physics and gave his famous crystallography lectures. It is said that he is noted for his great field trips: the Sierra Nevada, Mt. Lassen and Baja California, to name a few. Dr. Carter was influential in the organization of the museum he will show us tonight and, he was curator of the Pasadena City College Geology Museum during his tenure at PCC.

Dr. Bruce Carter began by noting that, here in the Geology building, in our meeting room, there is not a single rock!

Dr. Carter gave us a little history starting back to the 1920's. Edwin Van Amringe, H. Stanton Hill, Gus Meister and others formed Mineralogical Society of Southern California, MSSC, as a consequence of taking and teaching classes here at Pasadena City College, PCC. For them and their students, Bruce explained, the importance of knowing what you were looking at was paramount. What is it? What's *in* it? Until you understand the composition of the rock, you don't really have much of a picture of what's there. That was the spark!

Dr. Carter moved us into room 210. In room 210, there are exhibits and file drawers with rock and mineral sets used by students of geology here at PCC. In 1971, the E building looked very different than it does now, one year later, there was money to renovate the geology building, so everything was packed up and moved out of E building and stored in the B building. Then, B building was also to be renovated, so again everything had to be moved this time to the wooden bungalows across campus. After the renovations, all the materials had to be moved back from the bungalows to the E building. In that whole process, things were not put back in their rightful places and, as such, remained that way for a year or so until things could be organized.

Many of the specimens in room 210 are items recognized by Bruce today. They are some of the same ones that were on display back then. After the renovation, the new student- friendly study area was equipped with microscopes, tables and specimens, as it is today. The original concept was for the faculty to be available to students who may have needed them – that's why the faculty offices are closely adjacent to the study area and materials. Today dinosaur exhibits have been added to the mineral, rock and expansive sand collections and, to the curriculum, as well. "Recent", larger acquisitions of minerals purchased from vendors or dealers are housed here in room 210, i.e., the large amethyst specimen on the right as you enter the room.

Next, Dr. Carter moved us into one of the classrooms and showed the drawers of different rock and mineral sets. He gave a brief explanation of what each student was expected to know about each of the 50 or so mineral and rock sets. Students got a close look and feel of each specimen, they touched and smelled them. They learned about the mineral then learned how to identify the mineral in a rock. Each classroom has display materials for teaching purposes specific to the topic taught, i.e., geology, oceanography, etc. Even now, after class lectures, students have opportunity to go to the study area, pull a mineral or rock set from the drawer, or study the displayed specimens and consult with a faculty member. Application comes in the field at the source of the material. Field study is a part of the learning that had been incorporated early on.

Moving downstairs to the actual Museum, it's amazing to see how extensive the museum is and how many, and with such a variety of specimen, that are housed within. The museum is fascinating. Dr. Carter showed us the special microscopes, drawers and drawers of specimens, huge display cases of wonderful minerals, crystal models and sets of models for study. It's a laboratory classroom museum. How lucky can these students possibly be? Many specimens were donated collections, discoveries by students on field study trips, purchased

specifically for the museum or pieces acquired otherwise – all valuable to the museum and those who gazed upon them. In fact, a prominent collector donated his collection to start the Van Amringe Scholarship Fund.

During organization of the museum, there were boxes of specimens, Crestmore samples included (Crestmore, a commercial quarry in Riverside, CA), that were stacked up waist-high in the room. After recruiting student interns, Dr. Carter was able to finally get the sorting completed.

He showed us the drawers of wooden crystal models! Dr. Carter loved teaching crystallography and showing students how to index crystals. There were cabinets containing duplicate minerals for students to study. The Dana System of classification (chemical) is used in the museum, as you will notice.

Pseudomorphs, hydrocarbons, coppers, old mineral test sets (prospector's set of minerals), meteorites and many other items are on display. Bruce told us that his esteemed colleague, Dr. Janet Gordon, Ph.D., catalogued everything in the minerals display, some 3,000 specimens, at the time. She also created some of the displays on the south wall.

Display cases show elements, sulfides, borates, silicates and so on. The museum itself was converted to include a small "classroom" where mineralogy and petrology were taught. Optical mineralogy is included, and students are able to view thin sections under special microscopes. Additionally, there are gypsum crystals, twins, and a lot of specimens. Lots and lots of specimens are held at the museum. Bruce invited us to take a look around, browse through the specimen drawers, the model drawers and check out the displays, microscopes and thin slices.

Bruce told us about the late '70's and into the 80's. They used to go to Rock Currier's warehouse, buy specimens to resell here on campus. The money raised plus money raised at street fairs, was used to buy teaching supplies and get some money for the school to buy specimen for the museum. The MSSC Pasadena show attracted dealers who made donations to the school.

Bruce gave an example of the downside. It involved the purchased specimens of South African rhodochrosite, cranberry, clear and cost 1/3 of what it was worth at the time...a huge amount in today's market.

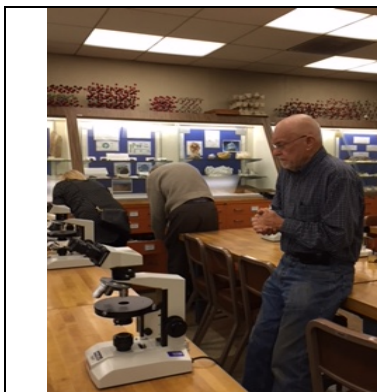
Unfortunately, there was someone who had keys to the campus, they figured out the how to pick the display locks, and stole the rhodochrosite and other fine specimens. From there on, the museum stopped adding fine specimens.

Following the "tour", Dr. Carter fielded questions and comments. "...Start with a hand lens, look at a rock..." (Dr. Bruce Carter, Ph.D.)

Ultimately, any mineralogy student will benefit from the museum. The specimens and hands-on drawers of specimens, models, microscopes and memorabilia are a treasure of which Pasadena City College should be very proud. The legacy left to us by Dr. Carter and those before and after him is one to be cherished. Thank you.

After the tour, everyone went back to room 210 for refreshments, good conversation and a look at the display cases with a different eye.

[Secretary's Note: If you missed this tour and the history associated with the PCC Geology Museum, you missed out! Come to our next meeting, December 8, 2017. You won't be sorry!]



Dr. Bruce Carter, Ph.D. points out microscopes used to view and study minerals, rocks and meteorites in the PCC Geology Museum

Photo by Angie Guzman



Hand-crafted lattice model, the nature of the chemical bond, made by Dr. Linus Pauling, Ph.D., on display in the Geology Museum at PCC. Dr. Pauling was awarded two individual Nobel Prizes: Chemistry (1954) and Peace (1962).

Photo by Angie Guzman

List of Upcoming MSSC Events : Mark your Calender!

Event	Date	Comments / Scheduled Program (if known)
Meeting Dates:	February 16, 2018	Larry & Leslie - Opals Part 2
	March 9, 2018	Walton Wright: Continental Drift/ Plate Tectonics
	April 13, 2018	Pete Goetz: American Opal Society
	May 11, 2018	To Be Announced
Annual Banquet	January 13, 2018	Bill Besse: A Not So Quick Trip through China
Board Meeting	December 3, 2017	Board Meeting at Bruce Carter's house

Note: Dates and programs shown above are subject to change. Check your bulletins to confirm final information each month.

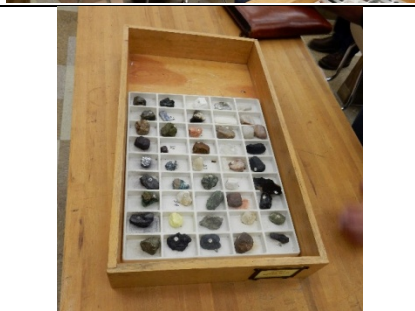
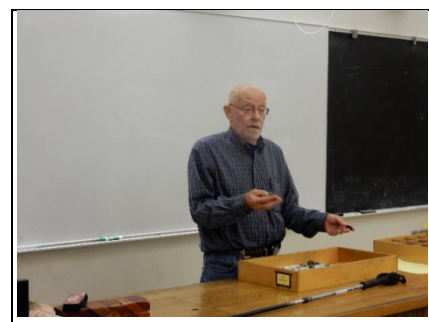
BACK TO SCHOOL WITH DR. BRUCE CARTER By: Rudy Lopez

Friday, November 10th, Dr. Bruce Carter made everyone at our regular meeting go back to school.

Dr. Carter guided all who attended from room to room and explained how the Geology Department had been changed. There was a total remodel of the building and everything had to be packed up and stored. We went into the room where we have our after-meeting snacks and found out it was created for tutoring, and professors are always available for assistance.



We went into two different class rooms. In the first classroom we experienced what new geology students have to learn. They are expected to know what rocks and minerals are, what the difference is, examples of each, the difference between igneous, sedimentary and metamorphic rocks, Mohs scale of hardness and much more. We all passed this class with flying colors.



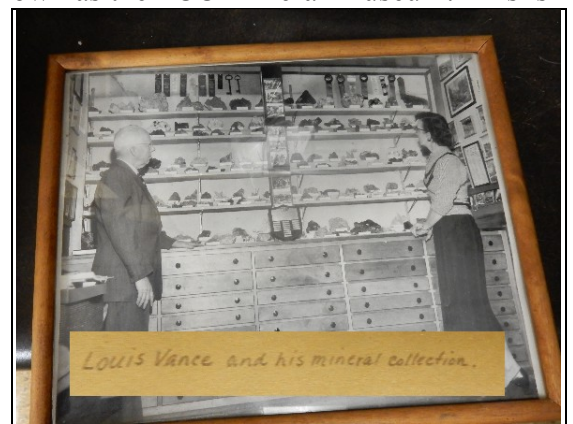


Once we finished going through the trays of rocks, we had to make sure we returned everything to the right locations.

Onward to the next classroom, which was downstairs and is better known as the PCC Mineral Museum. This is the second time I have seen the museum and it's bigger than I remember. The tables all had microscopes on them and there were plenty of minerals to look at.

Dr. Carter, explained how the museum was started and was set up. Everything was in boxes and because of the time factor when moving out, minerals were placed in boxes unmarked and mixed up. It took a lot of time to go through the boxes and put everything where it belonged. I was walking around taking pictures and found an interesting picture.

Here are more pictures of the museum and all that attended.





Everyone had a great time, I know I had a great time and took lots of pictures as did everyone else. There were lots of question thrown at Dr. Carter and he had all the answers.

I want to thank Bruce for giving us the time to see what the PCC Geology Department has to offer students and what gems lay beneath our meeting room for all to view.

GREAT JOB BRUCE!

MSSC ANNUAL BANQUET & SILENT AUCTION

Saturday, January 13, 2018

The cost of the Banquet is \$40.00.per person

Make you reservation with Rudy Lopez (programs@mineralsocal.org).

There is plenty of seating available. If you made a reservation and circumstances change where you or your guests cannot attend, **please notify Rudy Lopez before Wednesday, January 10th, 2018**. Thereafter you will be responsible for paying \$40.00 for each individual reservation regardless of attendance. It would be a shame to miss this event because you delayed making that reservation.

Call or email Rudy Lopez to make your reservation today!

626 993-7989

programs@mineralsocal.org

Mail Checks to:

MSSC

1301 Leonard Ave

Pasadena Ca 91107

If you haven't done so already, plan to pay your dues at the same time.

Dues are officially due 1/1/2018.

The speaker this year is: ***Bill Besse***

Topic: A Not So Quick Trip through China ♦ and ♦ the 4th International Mindat Conference – Myanmar. In 2016, Bill and a few friends decided to go to the 4th International Mindat Conference in Myanmar (formerly Burma). Several gem mines were visited in the Mogok area. To get acclimatized to the change in time zones, the group decided to leave a few days before the conference. This turned into 12 days in China, visiting several mineral areas.

Social Hour 5:30 pm: Dinner 6:30 pm; Speaker 7:30 pm

Oak Tree Room (next to Coco's)

1150 West Colorado Boulevard

Arcadia, CA 91007

Don't forget to bring your donations for the Silent Auction

The MSSC's 53rd annual Pacific Micromount Conference By Linda Elsnau

For the first time in I don't know how many years, the Pacific Micromount Conference will be in a new location. Rather than the San Bernardino Museum, it is moving to The Fallbrook Mineral Museum for the 2018 event. Chairman Al Wilkins has worked long and hard to find a new location and to get everything ready for the participants.

The conference takes place **January 26 & 27, 2018** at

The Fallbrook Mineral Museum

123 W. Alvarado St., Fallbrook, CA

Full information and the early registration form are attached to this bulletin.

MSSC DAY AT OC PARKS FAMILY FESTIVAL By:

Rudy Lopez

On Saturday, October 14, 2017, MSSC participated in The Cooper Center Prehistoric OC Family Festival. An annual Family Festival celebrating local Archaeology, Paleontology, History, Culture, Science, Cabbage and Wire Wrapping.

MSSC had the ideal location in the center of the entire event and located at the main entrance of the museum. We certainly attracted a lot of attention.

We had cabbage demonstrations, with Angie Guzman and Rudy Lopez shaping rocks that were used in the wire wrapping classes.

The wire wrapping classes were headed by Renee Kraus, with Leslie Ogg, Cheryl Lopez, and Angie Guzman assisting.

We got a good early start, scouted out our location not really knowing where or how we were going to set up. Once we checked out our spot, we had to setup the cabbage area and the wire wrapping areas. I had to concede to the ladies on how to set up the wire wrapping location. I set up my cabbage equipment in a corner, so people could get a good view of what we were cutting and cabbage. We all pitched in and we were setup within an hour. Everyone knew what they had to do and the set up was easy.

We had to make a change at the wire wrapping location after the signup sheet was put out. With the overwhelming response for the wire wrapping, we needed another table and more chairs. The new setup allowed the wire wrapping to accommodate 6 to 10 wrappers at one time. Renee and Cheryl started setting up the wire wrapping table while Angie and Leslie got the display case and give away table ready.

Don't think I wasn't doing anything, someone had to take the pictures and that is hard work!



The Crew

Leslie Ogg, Renee Kruse, Rudy & Cheryl Lopez
and Angie Guzman

Once the event opened you can see we were all busy. Renee is giving help on her wrapping class, while Cheryl is having her first attempt at wire wrapping. Leslie is at the giveaway table and Rudy is at the cabbing area. Angie is missing, but it is her turn on the camera.



The main attraction at our booth and the event was the Wire Wrapping classes. The event staff told us our booth was the busiest the whole day. The Festival was from 10:00am - 3:00pm and we had the signup sheet full for the day by 11:00am. We had hoped to be finished by 2:00pm so we could start cleaning up, but we had so many that came later, we had to add more classes.



wire wrapping classes.



The cabbing demonstrations that were done by Angie and Rudy went well. We had to explain what we were doing and how it tied into the wrapping classes.

Angie busy on the cabbing machines. Angie is working on two CABKING machines that have 9 wheels that shape and polish and a saw attachment that will cut rocks to shape.



At our give away-table we gave over 350 bags of minerals and sea shells.



I want to thank the Cooper Center & OC Parks for inviting us again to participate in their event. I also want to thank Renee Kraus for her great wire wrapping classes, which were one of the biggest attractions of the event. Thanks to Leslie, Angie, and Cheryl for working on the giveaway table. Angie for doing a fantastic job on the cabbing machine. We all did a fantastic job and did a great job as usual representing MSSC at the event we attended.

More Pics from this event can be found on the MSSC website: www.mineralsocal.org

Ride Share Listing

Can You Provide A Ride?

Would You Like Company On The Drive To Meetings?

We have heard from several of our members that they would like to ride-share with someone to the meetings. We will list the names, general location and either a phone number or an email address of anyone who would like to connect for a ride-share. If you would like to catch a ride or would like company for the trip, let me know at msscbulletin@earthlink.net and I'll put the information in this section of the bulletin. After that, any final arrangements made are up to you. Also, If you make a connection that works for you, let me know so that I can remove your information from the bulletin. The Editor

Looking for	Who	Where	Contact at
A ride	Richard Stamberg	North Orange County, near Cal State Fullerton	
A ride	Catherine Govaller	San Bernardino, CA	

WEST COAST GEM & MINERAL SHOW **May 18 - 20, 2018**

Minerals ♦ Fossils
Gemstones ♦ Jewelry
Meteorites ♦ Beads
Decorator Items
Lapidary
Metaphysical



FREE Admission
FREE Parking
Open to the Public
Wholesale section
for Qualified Buyers

SANTA ANA, CA ♦ HOLIDAY INN / ORANGE COUNTY AIRPORT

2726 S. Grand Ave. (Take 55 Fwy Exit 8 for Dyer Rd. to S. Grand Ave.)

www.MineralShowsLLD.com

MineralShowsLLD@gmail.com

MSSC Advertisement Policy:

Mineral-related ads are allowable in the MSSC bulletin. Below is the price per month

	Business Card	\$5.00	
	1/3 page	\$10.00	
	1/2 page	\$20.00	
	Full Page	\$35.00	

In addition, any advertiser who purchases 12 months of space in advance will receive a discount of 12 months for the price of 10 months. The copy for the ads should be mailed to the editor at bulletin@mineralsocal.org and the payment should be sent to the
MSSC Treasurer 1855 Idlewood Road, Glendale, CA 91202

Calendar of Events:

Only local area shows are listed here. Other CFMS Club shows can be found at: <http://www.cfmsinc.org/>

DECEMBER 2017

December 9 - 10: RIALTO, CA

Orange Belt Mineralogical Society

Near Rialto City Hall Lot

105 South Palm Avenue

Hours: 9 - Dusk daily

Website: <http://OBMSrocks.yolasite.com>

[Show Page](#)

JANUARY (2018)

January 20 - 21: EXETER, CA

Tule Gem & Mineral Society, Visalia

Exeter Veterans' Memorial Building

324 N. Kaweah Avenue

Hours: Sat 10 - 5; Sun 10 - 4

Website: www.tulegem.com

FEBRUARY (2018)

February 16 - 25: INDIO, CA

San Geronio Mineral & Gem Society

Riverside County Fair & National Date Festival

82-503 Highway 111

Hours: 10 - 10 daily

2017 MSSC Officers:

OFFICERS		
President	Ann Meister	president@mineralsocal.org
Vice President	George Rossman	vicepresident@mineralsocal.org
Secretary	Angie Guzman	secretary@mineralsocal.org
Treasurer	Jim Kusely	treasurer@mineralsocal.org
CFMS Director	Jo Anna Ritchey	
Past President	Geoffrey Caplette	
DIRECTORS		
2016--2018	Bruce Carter	
2016--2018	Bob Housley	
2016--2018	Leslie Ogg	
2016-2017	Pat Caplette	
2016-2017	Pat Stevens	
COMMITTEE CHAIRS		
Bulletin Editor	Linda Elsnau	bulletin@mineralsocal.org
Hospitality	Laura Davis	
Membership	Cheryl Lopez	membership@mineralsocal.org
Micro Mount Conf. Chairman	Al Wilkins	
Program and Education	Rudy Lopez	programs@mineralsocal.org
Publicity	Linda Elsnau	bulletin@mineralsocal.org
Webmaster	Leslie Ogg	webmaster@mineralsocal.org

About the Mineralogical Society of Southern California

Organized in 1931, the Mineralogical Society of Southern California, Inc. is the oldest mineralogical society in the western United States. The MSSC is a member of the California Federation of Mineralogical Societies, and is dedicated to the dissemination of general knowledge of the mineralogical and related earth sciences through the study of mineral specimens. The MSSC is a scientific non-profit organization that actively supports the geology department at Pasadena City College, Pasadena, California. Support is also given to the Los Angeles and San Bernardino County Museums of Natural History. The Bulletin of the Mineralogical Society of Southern California is the official publication of the Mineralogical Society of Southern California, Inc.

The MSSC meetings are usually held the second Friday of each month, January, February and August excepted, at 7:30 p.m. in Building E, Room 220, Pasadena City College, 1570 E Colorado Boulevard, Pasadena, California. The annual Installation Banquet is held in January, and the annual Picnic and Swap Meeting is held in August. Due to PCC holidays, meetings may vary. Check the Society website for details.

The Society also sponsors the annual Pacific Micromount Symposium held at the San Bernardino County Natural History Museum during the last weekend of January.

Annual Membership dues for the MSSC are \$20.00 for an individual membership, \$30.00 for a family membership. Bulletins are delivered by email, there is an additional annual \$20.00 fee if you prefer paper bulletins mailed to your address. The Society's contact information:

Mineralogical Society of Southern California

1855 Idlewood Rd.,

Glendale, CA 91202-1053

E-mail: treasurer@mineralsocal.org

Website: www.mineralsocal.org **The Mineralogical Society of California, Inc.**

Permission to reproduce and distribute original material published herein, in whole or in part, for non-commercial purposes, is hereby granted provided the sense or meaning of the material is not changed, the editor is notified, and the author's notice of copyright is retained. **All other articles used in our bulletins are with the specific permission of the author. Permission to use these documents must be obtained from the author for each use**

DISCLAIMER: The Mineralogical Society of Southern California, Inc. is not responsible, cannot be held responsible or liable for any person's injuries, damages or loss of property at or traveling to or from any general meeting, board meeting, open house, field trip, annual show or any other MSSC event.

MSSC Bulletin Editor
3630 Encinal Ave.
Glendale, CA 91214-2415



To:



**With Knowledge Comes
Appreciation**

**Your MSSC
Bulletin Is
Here!**

Happy Holidays!

