

Bulletin of the Mineralogical Society of Southern California

Volume 77 Number 8

August 2007

The 834th Meeting of The Mineralogical Society of Southern California

Picnic Time

Saturday, August 18, 2007

10:00 a.m. to 2:00 p.m.

Fallbrook Gem and Mineral Museum

123 W. Alvarado St.

Fallbrook, California

Featuring:

- **Important businesses concerning all MSSC members**
 - **Leadville Field Symposium**
 - **NASA scientists need your expertise**
 - **What's out there at Topaz Mountain**
-

August Gathering

August 18: Picnic at Fallbrook Mineral Museum



Get ready for a delightful day of mineral camaraderie with the Fallbrook Gem and Mineral Society as the MSSC joins them for a picnic! This is also an excellent opportunity to see the museum and learn more about its future.

When: 10:00 a.m. to 2:00 p.m. on Saturday, August 18, 2007, with the potluck lunch at 12:30.

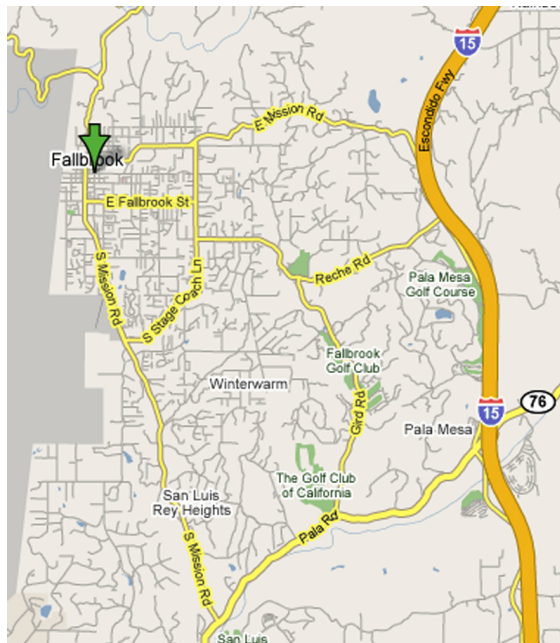
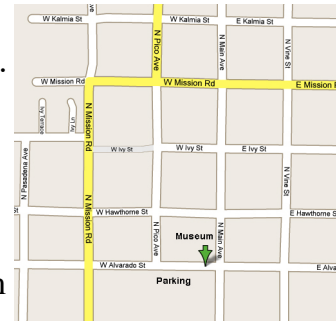
Where: Fallbrook Mineral Museum, 123 W. Alvarado St., Fallbrook. The festivities will be held in the museum complex's Tourmaline Room.

Food: Bring a dish of any kind to serve 6-8 people.

Minerals: Each person may bring 3-4 flats to sell from 10:00-12:00, and bring your \$\$\$ to buy specimens to support the museum.

Questions? Please contact Janice Bricker at 760-728-1333, 760-728-1130, or janicebricker@roadrunner.com.

Driving instructions: Take I-15 south from Temecula to Mission Rd exit (exit #51) toward Fallbrook (west). Continue on E. Mission Rd as it joins Old Hwy 395 and CR-S13. It is about 5 miles to downtown Fallbrook. Turn left onto N. Main Ave. Go three blocks and turn right on W. Alvarado St. Park in the lot on the south side of the street, opposite the museum. Driving time from Pasadena is approximately 1 hour and 40 minutes. See maps below.



Minutes of the July 13, 2007, Meeting

The 833rd meeting of the Mineralogical Society of Southern California was held on July 13, 2007 at Pasadena City College. President Ilia Lyles brought the meeting to order at 7:30 p.m.

She then introduced the speakers of the evening, Fred and Linda Elsnau, who gave a presentation entitled: "Micro-Minerals-Mostly." MSSC members, Fred and Linda Elsnau, have been avid collectors of gems, minerals, and petrified coral and wood, of all types and descriptions, for many years. During the past eleven years, they have also acquired an extensive collection of micro-minerals, and further developed their already considerable expertise in photography, to capture these micro-minerals on film.

Fred and Linda took all of the many beautiful pictures of the wide variety of minerals featured, including crystallized gold, mimetite and a millerite star. Also, members were made aware of the painstaking work involved in mounting and preparing micro-minerals for photographing.

At show and tell, Dan Krawitz displayed numerous photographs, specimens and jewelry he obtained from the Mineral Research Laboratory, which will be closing shortly. Many of the photographs and items resulted from the decades of mining-related work and investigations conducted by Dr. Ralph Pray. Mr. Krawitz also provided MSSC members with processed silver specimens which originated from the Christmas Mine in Death Valley, CA.

Dr. George Rossman, at "show and ask," stated that the Mars' Rovers are currently in sedimentary locations similar to those found near Wheeler, UT. Apparently, calcite, quartz and pyrite pseudomorphs are present, the only question is "after what?" Dr. Rossman requested MSSC members, especially micromounters, to view his pictures and to provide any relevant input.

Walt Margerum announced that Ron Thacker wishes to donate his collection of mineral specimens to the MSSC, and welcomes visitors.

Mr. Margerum also stated that he had only received one response, so far, with regard to the proposed field trip to Utah over the Labor Day weekend. Jim Imai has not received any responses.

Ilia Lyles announced that the annual picnic would be held in Fallbrook, CA on August 18, 2007, from 10:00 a.m. until 2:00 p.m. She also requested that members contribute specimens for the silent auction.

The door prize was won by John Moore. The meeting was brought to a close at 8:45 p.m.

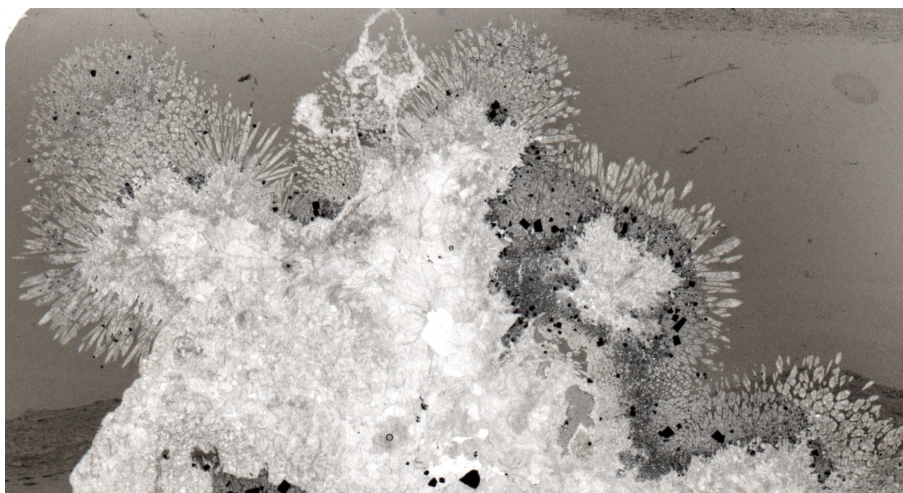
by Ilia Lyles.

Respectfully submitted by Pat and Geoff Caplette

Attention!!All Experts in Pseudomorphs

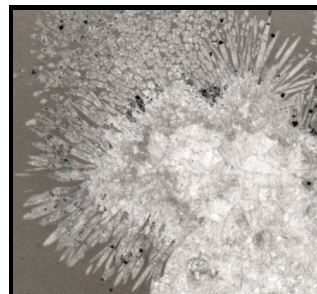
NASA Scientists Need Your Help

By Dr. George Rossman



MSSC members, can you help scientists understand the mineralogy of the early earth?The current excitement over the images of crystals of sedimentary minerals returned from Mars by the two rover spacecraft has caused a number of scientists to pay attention to sedimentary minerals that form in the early earth. Of particular interest are, what are now, pseudomorphs after an unknown mineral in a terrestrial sample collected in Utah. Above is the picture of the terrestrial pseudomorphs in need of identification.

The picture shows white, radiating, bladed crystals in a thin section of a calcite-rich mudstone collected at depth in the Middle Cambrian age Wheeler Formation, western Utah. They were collected by Professor Robert Gaines at Pomona College. The Wheeler Formation is known for its Trilobite fossils. (The field of view of the first picture is about 10 cm across. An enlargement of the upper left region is in the picture above.)



The radiating bladed objects that have replaced the original mineral are now mostly quartz, plus some aragonite and pyrite. The question is: what mineral were they originally before they were transformed into the pseudomorph?

If you have an idea, do let us know. Hopefully, someone will recognize the shape of these pseudomorphs. It is very likely that some of our MSSC members have looked at many more

evaporite minerals that the space scientists at JPL and professors at universities!

Minutes of the July, 2007 Board Meeting

The July, 2007 Board Meeting of the Mineralogical Society of Southern California was held at Pasadena City College, in Pasadena, CA, on July 13, 2007, immediately following the monthly meeting. President Lyles brought the meeting to order at 8:45 p.m. In attendance were the following MSSC members: Ilia Lyles, Walt Margerum, James Imai, Leslie Ogg, Bob Housley, Fred and Linda Elsnau, Ahni Armstrong, and Geoff and Pat Caplette. Walt Margerum gave a financial presentation, including the submittal of a Net Worth Report, dated July 12, 2007, showing assets of \$20,172, and the 2007 Proposed Budget. He announced that \$3,000 would be transferred into a mutual fund shortly.

Trailer and Display Cases

It is the Board's consensus that the trailer be sold, as trailer and storage related costs are adversely affecting the finances of the MSSC. Input from MSSC members on this issue is urgently requested. Board members did not believe it would be difficult to enlist volunteers to store a limited number of display cases at their respective homes. In the event that a show is held in the future, it was estimated that a total of thirty cases would be sufficient for display purposes. Walt Margerum also stated that an individual had contacted Janet Gordon regarding the purchase of a few cases.

Future Show

Fred Elsnau presented figures showing the actual costs of conducting a gem and mineral show at a small, local venue (such show usually has eight participating dealers). The figures clearly demonstrate that such a show would be feasible financially for the MSSC, particularly if case storage and transportation costs were removed from the equation (almost one-third of the total cost!).

The 43rd Pacific Micromount Conference

The Micromount Conference will be held January 25-27, 2008 at the San Bernardino County Museum in Redlands, CA. Walt Margerum submitted information regarding registration, conference lodging and the like, and also an Advance Registration Slip. He further provided guidelines which precluded participants from selling minerals at the conference (swapping will be allowed). Specimen selling gives rise to permit, taxation and other potential problems.

Mr. Margerum further announced that specimens were needed for the auction and \$1.00 table, and that donations were tax deductible.

New MSSC Officers

Candidates are needed for most of the MSSC officer positions. Nominations should be provided as soon as possible. The meeting was brought to a close by Ilia Lyles at 9:30 p.m.

Respectfully submitted by Pat and Geoff Caplette

The Trailer and Show Problem

By Walt Margerum & Jim Imai

In 1987 the MSSC purchased a trailer to store the display cases used at our shows. Since that time the cases and trailer have served the MSSC well. But after the disasters of the 2004 and 2005 shows, the cases, and trailer have been unused. The storage of the trailer at 'Dry Dock Storage' is presently \$75 per month, and if trends continue it will increase. By the end of this year we will have expended \$1800. In 2006 the Board decided to sell cases to offset the storage cost, and reduce the cases to a more reasonable number, from 30 to 20; the estimated number for a smaller show. To date we have sold \$1700 worth of cases, and have an inquiry for further sales. While these sales have offset the storage, they are not a permanent or desirable solution.

Several suggestions have been made to resolve this issue:

- Hold shows to offset the costs (\$900 storage, and transportation, \$700 for the 2005 show).
- Sell cases to offset the storage (9 cases per year).
- Find cheaper storage.
- Sell the cases and trailer.
- Sell only the trailer, and have members store the cases.

Option 1 does not appear to be viable, since we have not yet found either a venue or have been successful in finding a show chair. The last financially successful show was the 2001 show in Pasadena. Since then we have had three shows with losses and one with a profit, for a total of over \$20,000 in losses. These numbers reflect rapidly increasing costs for past venues, and a steady decrease in active membership in rock and mineral clubs.

Option 2 will work in the short term, but since we have approximately 50 cases it will only take several years until we have reduced our supply below that needed for any show.

Option 3 has been explored and our present storage is the cheapest available in the Pasadena area. The storage cost is for the trailer, and will remain the same regardless of the number of cases. It also has the same results as option 2.

Option 4 will negate displays for any future show. The MSSC has been renowned for its displays featuring minerals, a distinction from other shows in which displays are often lapidary / jewelry oriented. New cases would be prohibitive in cost.

Option 5 was selected at the July Board of Directors meeting as the best long term solution. The cases break down to a compact, self-contained package; the length of a case, and about 8 inches high. This is a major decision, affecting the future direction of the MSSC, so the Board of Directors decided it should not be made without input from the Membership at large. It is felt by the Board that the decision should be finalized by the end of this year.

Show and Tell

Steve Knox recently went to Topaz Mountain in Utah and submitted these two pictures that he took at the location. The one on the left is a red beryl, also known as red emerald in the gem trade. The one to the right is topaz crystals. Mr. Knox hoped that showing pictures of what out there will spur members' interests in taking a field trip to the Thomas Mine.



Mr. Knox also submitted the following two pictures which he took at Colorado. The one on the left is the collecting site. The one to the right is amazonite/quartz from that location.



Show and Tell is opened to all members

Part of the fun of collecting is being able to show and tell. In this new section called **Show and Tell**, I hope to generate some dialogue among all members, especially those who are unable to attend the monthly meetings.

Any member who is interested in showing the world his or her collection, new find, geological formation should e-mail me one or more photos (yes, I need photos!) and a brief description or narrative about the photo(s). Please limit the subject matter to geology, mineralogy and related subject matters.

WEST COAST GEM & MINERAL SHOW
 Holiday Inn - Costa Mesa ★ Bristol Plaza ★ 3131 S. Bristol St.
COSTA MESA, CA - the FALL SHOW
NOV. 9 - 10 - 11, 2007
 Show Hours: Fri. & Sat., 10 - 6, Sun. 10 - 5
100 Top Quality Dealers with Great Treasures for the Holidays!
 Minerals ★ Fossils ★ Gemstones ★ Jewelry ★ Beads ★ Meteorites
Open to the Public ★ FREE Admission ★ Wholesale ★
Retail
So easy to find . . . Less than a mile from John Wayne Airport!
Take the Bristol Street exit (south) from I-405. South of the South Coast Plaza Shopping Center.
 Martin Zinn Expositions, L.L.C., P.O. Box 665, Bernalillo, NM 87004
 Fax: (505) 867-0073, email: mz0955@aol.com, www.mzexpos.com

2007 Calendar of Events

August 3-5 2007, Nipomo, Orcutt Mineral Society, St. Joseph Church 298 S. Thompson Ave., Wes Lingerfelt (805) 929-3788

August 4-5 2007, San Francisco, San Francisco Gem & Mineral Society San Francisco County Fair Bldg Ninth Ave. & Lincoln Way Hours: Sat. 10-6 Sun 10-5 Ellen Nott (415) 564-4230

August 24 – 26, 2007, Leadville, Colorado, Leadville Field Symposium at National Mining Hall of Fame and Museum Conference Center, Leadville, Colorado

Leadville Field Symposium

Friends of Mineralogy Colorado Chapter will hold a Field Symposium in Leadville, Colorado on the mines, minerals, mining, preservation, and history of the Leadville Mining District. The Symposium will complement the September 2007 Denver Gem and Mineral Show theme, which is Minerals of Leadville. We are planning talks at the National Mining Hall of Fame and Museum in Leadville and tours of the Climax Mine, the Museum, and other mines and mineral localities around Leadville. Ed Raines will give a tour with collecting opportunities, Museum director Sam McGeorge will speak, and we are lining up other high caliber speakers for a full weekend. Symposium events will start Friday evening and last into Sunday afternoon. Pre-Symposium historical tour(s) and activities will be arranged for those who are interested.

If you would like to attend this event, please fill out and mail in the registration form included in the attachment with this bulletin, along with a check for \$20.00 per participant (no cash or credit card), to the FMCC address on the

form. Because of logistics on field trips, etc., the number of symposium participants may be limited to the first 75 registrants. If there are limits, the cutoff will be determined by the postmark date on your registration envelope. This registration form and check will pay for all official events. FMCC is not handling lodging, transportation, or meals. However, a box lunch is included with the Sunday tour, and there will be a Saturday night symposium dinner with speaker for which we will obtain a head count and money at a later date.

A list of lodgings and contact information in the Leadville area is included too. We have arranged group rates with some of the hotels as indicated, and we ask that you contact the hotels directly and mention to them that you are attending the Symposium. We encourage you to make lodging reservations early. Leadville, which is at 10,000 ft elevation, is a popular place during the summer, and some group rates expire as indicated in said list.

Please notify your mineral-philic friends in Denver area clubs about the Symposium. Our May issue of this newsletter will contain additional information and a schedule of events.

Schedule

Friday, 6:30 – 7:00 PM: Check in, pick up packets at Conference Center

Friday, 7:00 - 7:05 PM: Welcome at Conference Center

Friday, 7:05 - 8:30 PM: History of the Leadville Mining District; Mines and Minerals – Bob Elder, Mining Engineer at Conference Center

Saturday, 9:00 AM – Noon: Tours – Climax Mine or Matchless Mine (The Climax tour will offer opportunities for collecting) Climax Tour begins at the mine gate; Alternative tour to the Matchless Mine leaves from the Museum.

Saturday, 1:30 PM – 4:00 PM Tour of Mining Hall of Fame and Museum
Museum, Front Entrance

Saturday, 4:00 – 5:30 PM “Preservation of Mines, Minerals and Mining History” Sam McGeorge, Director, National Mining Hall of Fame and Museum at Conference Center

Saturday, 6:30 PM Buffet Dinner at Conference Center

Saturday, 7:00 PM “Overview of the Geology of the Leadville District and Preview of District Tour” - Ed Raines, Geologist and Mineralogist at Conference Center

Sunday, 9:00 AM – 3:00 PM Tour of Leadville Mining District, with opportunities for mineral collecting. Ed Raines, Tour Guide Meet at Conference Center Parking Lot

For further information contact Richard Parsons at 303-838-8859 or

August 31 - Sept. 3 2007, Fort Bragg, Mendocino Coast Gem & Mineral Society Town Hall, Main & Loral Hours: Sat. & Sun 10-6; Mon. 10-4 Don McDonell (707) 964-3116

BY POPULAR DEMAND!
The Meister Trimmer is available again.
Contact Ann Meister
Email: meister_ann@hotmail.com
Phone: 626-794-3482