

Bulletin of the Mineralogical Society of Southern California

Volume 90 Number 3 - March, 2017

The 942.2nd meeting of the Mineralogical Society of Southern California

With Knowledge Comes Appreciation

March 10th, 2017 at 7:30 P.M.

**Pasadena City College
Geology Department, E-Building, Room 220
1570 E Colorado Blvd., Pasadena**

Program: Precious Heirlooms: Presented by Denise Nelson -

In this Issue:

<i>TITLE</i>	<i>Page</i>
Program: - Precious Heirlooms: by Denise Nelson	2
From the Editor: Linda Elsnau	2
Meanderings from the President: Ann Meister	2
Minutes of the February 18, 2017 Meeting	3
PMC Field trip to the Blue Bell Mine: Bob Housley	3
List of Upcoming MSSC Events	5
SCFM Spring Symposium & Field Trips	5
LA Nature Fest	6
Ride Share Listing	7
Possible field trips for 2017: By: Rudy Lopez	7
MSSC WILL ATTEND----HELP NEEDED: by: Rudy Lopez	8
Calendar of Events	9
March Featured Mineral:	10
2017 Officers	11
About MSSC	11

Remember: If you change your email or street address, you must let the MSSC Editor and Membership Chair know or we cannot guarantee receipt of future Bulletins

About the Program: Precious Heirlooms Presented by Denise Nelson, GIA GG –

Antique and estate jewelry pieces can reveal many things about those who owned them. The use of certain gems and materials can often be linked to surprising revelations, and in certain cases, provide valuable clues about a family's history.

This combination of gemology and genealogy is a perfect topic for Denise Nelson, who has taught genealogy and spent many years researching and studying the history of gems and jewelry. An appraiser, consultant and owner of INNER CIRCLE Fine Jewelry and Appraisal Services, Nelson has revealed many interesting facts to her clients in her 30 years in the jewelry business. She's traveled to 38 countries to research historical jewelry, visit mining areas and buy gemstones, pearls and jewelry for her customers. Nelson also designs jewelry and is a wholesaler to a number of jewelry stores. She is a member of the National Association of Jewelry Appraisers (NAJA).

Denise Nelson, GIA GG, Appraiser, Consultant and Owner of INNER CIRCLE Fine jewelry and Appraisal Services. Denise has 28 years of experience in the jewelry business and has traveled to 38 different countries, researching historical jewelry and buying gemstones, pearls and jewelry for her customers. Her visits to actual gem and mineral mining areas on 4 different continents have given her a rare opportunity to actually see the progression of gem materials from the mine to the final customer

From the Editor: Linda Elsnau

Whew, from the amount of stuff in this bulletin, it's a good thing we don't have any minutes for the cancelled Feb meeting. The bulletin is full of interesting stuff! My special thanks to Bob Housley for the interesting article about the field trip that followed the micro conference. Sounds like it was a good trip. It looks like we are getting a really interesting program for March so I hope the weather cooperates and everyone that wants to can make it. As usual, all member articles for the bulletins are welcome.

MEANDERINGS FROM THE PRESIDENT by Ann Meister

Wow, that was some nasty, wet weather. I'm sorry we had to cancel the regular meeting on Friday, February 18 and I apologize to those who may have been inconvenienced by the cancellation, but I felt it was an extreme safety issue. One member had already emailed me on Wednesday that she wouldn't be coming if the weather was as bad as forecast. During the day on Friday, I received emails and phone calls asking about the meeting and finally decided that it was too dangerous to have members on the road in the prevailing conditions. At my house in Altadena, I had at least 3.5 inches of rain plus 20+ mile per hour winds. Just before I decided on the cancellation, I had received an emergency cell phone alert message about flash flooding and had a roll of thunder rock my house. The radio reported trees down, surface streets and freeways flooded, washouts and mud and mess!!! It would be nice to have a more efficient way to contact members in such circumstances. Let me know what your ideas are. I also know everyone wants to hear Dr. George Rossman's talk so Rudy will reschedule it.

Don't forget the **MSSC Board of Directors meeting** on March 5 at 1:00 PM at the home of Bruce Carter. Lots to discuss. The meetings are open to any member who wishes to attend and see what the Board is up to. Please RSVP to president@mineralsocal.org.

Tucson Show in the News: I hope some of you got to Tucson, though I understand that attendance was down as evidenced by the availability of parking spaces and hotel rooms. *The Atlantic* online had an article about the Tucson gem and Mineral show specifically highlighting a Swedish man, Volker Bassen, who had fossilized giant clams *Tridacna gigantea* from east Africa. The sale of the fossils would support his philanthropic and charitable activities in Africa. The author of the article captures the "aura" of the visitors and variety of the shows stating, "Some of the show's visitors seem like business people at a trade convention, while others are more eccentric." Tucson is billed as the world's largest gem and mineral show with 60,000 attendees.

<https://www.theatlantic.com/science/archive/2017/02/tucson-gem-show/517065/>

Paleontology in the News: How about an “extraterrestrial” 100-million year old female insect trapped in amber from the Hukawng Valley in Myanmar. She has a triangular head and bulging eyes and is a member of a new order, called Aethiocarenodea and is called *Aethiocarene burmanicus*. <http://www.livescience.com/57655-extinct-alien-insect-trapped-in-amber.html>. And then there are the crystal caves of Naica in Chihuahua, Mexico, the lead-silver-zinc mine famous for the gigantic gypsum crystals, where scientists have now extracted long-dormant microbes from inside the gypsum. The organisms, which appear to be vastly different from nearly all life-forms found on Earth, have been trapped in fluid pockets inside the crystals for 10- to 50,000 years. I guess this is really biology, not paleontology, since “they remained viable in some fashion and were able to be regrown”. Wow. <https://www.sciencenews.org/article/microbes-survived-inside-giant-cave-crystals-50000-years>

The Soap Box: OK, I’m not the only one on the hiking safety soap box. This is from Deputy Dan Paige of the Los Angeles County Sheriff’s office. Eaton Canyon County Park was one of several parks closed on Saturday, February 18 following the deluge of Friday. Over 3" of water came down in Altadena. Water was flowing very fast out of Eaton Canyon and the area was closed due to flash flood danger. Deputy Page wrote for the Nextdoor neighborhood social network site: “Please do not go hiking right now. You would be amazed at how often brave Search and Rescue team members go out in this weather to rescue people who think it would be interesting sightseeing to go hiking, then plead to be rescued. Courageous rescuers then risk their lives to save them, as they have sworn an oath and believe strongly in the reverence for human life. If you know of someone considering sightseeing please ask them to think it through. Thanks!” And yet, I heard the rescue helicopters at least 2 or 3 times that weekend. Stay safe everyone...

Other Things To Do...

The **Von Kármán Lecture** on March 9 and 10 is titled “The Cold Atom Laboratory Mission: The coldest spot in the Universe.” Thursday is at the Von Kármán Auditorium at JPL and Friday is at the Vosloh Forum at PCC. Start time is 7 PM.

There is no **Watson Lecture** at Caltech in March. There will be two in April.

The **UCLA Meteorite Gallery** lecture is on Sunday, March 12 at 2:30 PM. The speaker is Roger Fu, a recent Ph.D. from MIT. His topic is “The water-rich interior of dwarf planet Ceres.” The Meteorite Gallery (Geology room 3697) is open with a docent present every Sunday from 1 till 4. The lecture is in Slichter Hall 3853 near the Meteorite Gallery.

The **Huntington Library** is having a free lecture that may be of interest on March 15, at 7:30 PM at Rothenberg Hall. “Cheng Foundation Lecture - The Chinese Question: The Gold Rushes and Global Politics” presented by Mae Ngai, Lung Family Professor of Asian American Studies and professor of history at Columbia University. She will discuss the role of Chinese miners in the 19th-century gold rushes of California, Australia, and South Africa, and the rise of anti-Chinese politics in the West. No reservations required.

MINUTES of the February 18th. 2017 Meeting

As noted above, the February meeting was cancelled due to severe weather and traffic problems.

PMC Field trip to the Blue Bell Mine: Bob Housley

The weather cooperated and the sky was clear and blue with the temperature in the mid-sixties, perfect mineral collecting conditions, when we met at the Zzyzx off ramp for the trip in to the Blue Bell Mine. We went in in 3 groups. Several participants, including a contingent from the Bay Area Mineralogists, that had been there before and knew the route went in early. The main group of us left the meeting area promptly at 10 am. Several more people who also knew the way came a little later. If I counted correctly in all there were 17 of us in 10 cars.

We all parked on the big dump at the A1 site and I began by giving the newcomers a brief introduction to where the various workings, collectively referred to as the Blue Bell, were located and what was likely to be found in each. I then took an enthusiastic pair through the narrow opening into the A1 chamber and showed them exposures of cerussite, wulfenite, and fornacite and described the other minerals that had been found there, while the rest of the newcomers looked over the large A2 dump.

While the first pair continued to work in A1 I came out and set out the left-over pizzas, chips, and soda from Saturday along with cups and an ice chest full of ice and more soda for everyone to help themselves to as desired. After the first pair came out of A1 with some nice cerussite I led them and the remaining newcomers who had been collecting on the nearby A2 dump on over to the C adit. There we met Wes Gannaway who had come in with the early group and already had a lot of green pyromorphite laid out which he generously shared with the new arrivals. After this I pointed out how to get to the D area and explained what was there, and then left everyone to explore on their own.

Now I need to digress briefly. What we call the Blue Bell Mine actually consists of about 30 shafts, pits, adits, and trenches spread over a region about a mile across. Mineralization was discovered in the area in the 1880's and it was initially thought to be a rich silver find. A number of claims were filed and much work was done. The flurry of activity soon died down, however, after the few pods of high grade silver ore were mined out and no more were discovered. Most claims were abandoned before 1900, but one named the May Queen was patented in 1890. It covers the area now generally referred to as the Blue Bell D site.

In 1890 The Western US had not yet been surveyed, but in order to patent land it needed to be surveyed and the location tied to a fixed marker. To make this possible the USGS put in a limited number of Mineral Survey Markers. In the past I found Mineral Survey Marker 58 on the top of the hill with the Blue Bell workings. Also in the past Wes had found one of the original stone corners marking the May Queen claim



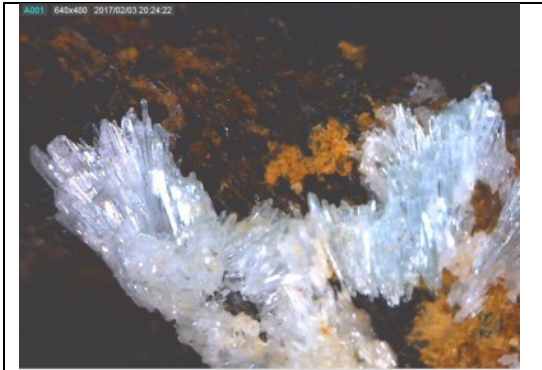
Brass USGS Mineral Survey marker 58 set in solid rock at high point with molten lead. (Wes Gannaway photo)



May Queen corner marker etched into solid rock in 1890. (Wes Gannaway photo)

Wes wanted to see the Survey Marker and I wanted to see the May Queen corner, so from the C site we took off together on a historical mission. Eventually we found both artifacts and Wes took pictures while I got the GPS coordinates. From our vantage point on the hillside we could see people working at the C and D sites and waved. On our way back down Wes and I stopped and worked quite a while at the E site about half way down.

By the time we got back to the C site it was too late to go over to the D site to see what was happening there, but I learned later from Herwig that he and Paul got some nice specimens of the complex fluorite that the Blue Bell is famous for from the D1 pit. I also learned from Stan Bogosian that the BAM group got some more nice diopside and some interesting, as yet unidentified, minerals out of the D2 adit.



Nice cluster of plumbophyllite crystals found on PMC field trip

Before heading for home I had time to work a few minutes in the C adit and among other things got one nice specimen of plumbophyllite, the rare lead silicate first described from there a few years ago.

I got back to the A site parking area just as several of the participants were heading out with heavy bags of rocks. Everyone I was able to talk to was happy with what they had found. A number of people, including the BAM group, even remained at the parking area to camp overnight and work for another day. I learned later from Stan that they found nice linarite and caledonite in the A2 glory hole.

List of Upcoming MSSC Events : Mark your Calender!

Event	Date	Comments / Scheduled Program (if known)
Meeting Dates:	April, 2017	Walton Wright - Identifying Petrified Wood
	May, 2017	Renee Kraus - Mohave Desert
	June, 2017	Mohamed Elghetari - Mars
	July, 2017	Unknown at this time
Board Meeting	March 5, 2017	Board Meeting at Bruce Carter's house

Note: Dates and programs shown above are subject to change. Check your bulletins to confirm final information each month.

Southern California Friends of Mineralogy has asked that we extend the following invitation to our members:

SCFM Spring Symposium & Field Trips

Current and past members of Southern California Friends of Mineralogy,

We are thankful for a lot of outreach to many groups this winter to help set up our March 25-26th Spring Symposium. I originally sent out our fall newsletter with March 25th weekend date to have you save the date, then subsequently sent an update with the announcement of the Pacific Micromount Conference and finally with a sharing of Midwest Chapter's upcoming program in early March. Sorry for the spam, but wanted to keep you aware of our plans for March 25th weekend as they evolved. If you want to suggest ideas for the fall symposium and to help us set it up, we would appreciate any support that is offered, as finding locations is becoming more of a challenge nationwide.

We have been diligently putting together our Southern California Friends of Mineralogy (SCFM) spring symposium together for several months now and are glad to finally provide you an attached flyer with details. We have had our speaker selected, a well-respected geologist who has shared with us a couple of years ago when we visited the OMYA Mine on north side of San Bernardino Mountains. Howard Brown retired from OMYA and spent the last three years mapping the complex geology of the Lane Mountains north of Barstow with Paul Stone, USGS. They have given presentations on their map development and the geology of this region to the Geological Society of American conferences in Ontario, CA and up in Alaska this past year as they prepare to publish their new geological map for Lane Mountain region with California Survey in near future. Howard has agreed to give us two quality power point presentations including recent photos of the area we will visit during the field trips. He and I will both have sample specimens to see, touch and check out during the morning symposium.

Bruce Bridenbecker, Howard and myself spent Friday, January 6th there in the Lane Mountains driving the BLM routes for field trip site locations. We found a nice variety of metamorphic minerals to collect for our weekend field trips on March 25-26th. The metamorphic skarn minerals include massive grossular garnet and epidote with crystals at abandoned Starbright gold or tungsten mine among other minerals you will find on websites describing this mine. That will be our first major stop with its excellent wooden ore bin for

photography, before checking out the hillside nearby with multiple scars from trenching for tungsten cutting through diorite, marble, wollastonite and quartzite exposures. Driving up the road we will check out some iron ore deposits with colorful mounds of hematite, magnetite, and limonite among other iron minerals for the adventuresome collector. The first day field trip will conclude with carbonate deposits of chrysocolla and other copper minerals found on dump piles as well as trenching pits.

As shared before, we initiated requests with BLM on January 3rd for use of the Desert Discovery Center in Barstow for our symposium where we have met off and on the last two decades, as well as a formal request to use BLM routes into the Lane Mountains that weekend. Unfortunately the Desert Discovery Center was booked up, but it took over three weeks for us to learn of this from BLM office. Our search for alternative sites in Barstow the second week of February found two really nice locations, but at \$300 cost a piece, we chose to reach out to two different agencies in Apple Valley to the south for the symposium with this March 25th date. Mojave Valley Water Authority was quite willing to support us again, but we were seeking a location closer to I-15 and finally secured it this week. On Monday, Alicia Borchmann, our SCFM secretary, and I visited the Lewis Center for Educational Research in the northern part of Apple Valley, only 3.5 miles off of I-15, and we have secured their facility for a modern, high tech symposium facility for convenience to I-15 and our afternoon field trips north of Barstow. Hopefully we can return to Mojave Water Authority another year when checking out minerals in the San Bernardino Mountains again.

We have the speaker, a location for the symposium, and the Barstow BLM District Manager has notified us as of Feb 1st by letter that we may use BLM routes into Lane Mountains for the field trips without permits. Camping at Starbright mine noted for tungsten scheelite mining could be promising for those with UV lights, while others might want to take advantage of motels in Barstow for the Sunday follow up field trip. We will discuss the Sunday field trip there at March 25th symposium, but can assure you that if you would like some nice barite, quartz, brown and red jasper, crystalline wollastonite, and other minerals, we have several sites ready to visit in the Lane Mountains area. Bob Housley has shared that he has found nice specimens in this area and is looking forward to returning once again.

I have attached the official flyer for our symposium and invite you to respond back to me if you plan to attend this spring with us. It will help us with our planning for giving you a successful collecting experience for two days this spring. If you haven't signed up for SCFM membership this year, we can take care of that on site Saturday morning so as to provide insurance coverage for you in association with California Federation of Mineralogical Society's coverage. Membership cost of \$20 is required if you participate with our field trips for our liability protection. For those of you who would like to mail the membership renewal application into our treasurer Bruce Bridenbecker, I have attached an application with mailing address.

Dr. Don Buchanan, President, SCFM

Editor's Note, I've attached the above documents to the email with this bulletin, if you don't get email bulletins, you can contact Bob Housley at (626) 449-6454 / rhousley@caltech.edu for more information

L.A. Nature Fest: March 18 and 19 9:30 am – 5:00 pm

Experience nature in a whole new way!

NHMLA is giving you two days to get up close and hands-on with all things nature. Whether you're an avid hiker or you barely go outside – L.A. Nature Fest is for you!

There's a surprising amount of nature in Los Angeles, and the more you know how to look for it, the more you'll see. You'll be blown away by the plants and animals, their incredible survival stories, the best ways to see them, and the people devoted to studying and protecting them.

L.A. Nature Fest unfolds in our very own Nature Gardens, a place where our visitors can explore, our scientists do real research, and our educators share nature's coolest stories.

Festival Highlights Include:

Over 30 exhibitor booths in partnership with local organizations
 Access to scientists and nature experts to answer all your questions
 Live animal presentations, stage performances and nature walks
 Expert tips on how to attract wildlife to your garden
 Hands-on art and craft activities, as well as early morning bird walks

Keep an eye out for our “Keeper Chats” hosted by our Live Animal Program Team! Meet a variety of animals and hear stories about how we care for them. Throughout the day in the Nature Lab, Insect Zoo, and Butterfly Pavilion!

Slug and insect painting
 Participate in citizen science
 Look out for special pop-up performances in the Nature Gardens

Nature Scavenger Hunt: Join Museum educators as we explore the pollinator garden looking for wildlife and discovering the plants they use for food and shelter. If you find them all, you’ll win a prize!

Hands on activity stations include making of Nature Crowns, Nature Bracelets and Bookmarks, as well as Sun Prints

Explore the LADWP Green House and learn about the many ways to save energy inside this fun, educational and interactive home!

Ride Share Listing

Can You Provide A Ride?

Would You Like Company On The Drive To Meetings?

We have heard from several of our members that they would like to ride-share with someone to the meetings. We will list the names, general location and either a phone number or an email address of anyone who would like to connect for a ride-share. If you would like to catch a ride or would like company for the trip, let me know at msscbulletin@earthlink.net and I’ll put the information in this section of the bulletin. After that, any final arrangements made are up to you. Also, If you make a connection that works for you, let me know so that I can remove your information from the bulletin. The Editor

Looking for	Who	Where	Contact at
A ride	Richard Stamberg	North Orange County, near Cal State Fullerton	
A ride	Catherine Govaller	San Bernardino, CA	

Possible field trips for 2017: By: Rudy Lopez

Kingman Arizona

I was approached by Robert E. Pedersen at the annual banquet about a possible field trip in the future. Robert is a member of MSSC and lives in Kingman, Arizona.

Robert is willing to set up a guided trip to a local collection area in the Kingman vicinity for a day and provide a map to different mineral collection areas we can go to on the way home (not guided by Robert). Robert did tell me we would find some nice minerals at the locations he will send us to. Which means it will be a multi-day trip and hotel time.

I will bring this up in the next meeting and will have more information on, what minerals we can find, equipment needed, possible dates and lodging for this field trip. This will be a 4-wheel drive trip, he did tell me that much.

Natural History Museum

I spoke with Aaron Celestain at the annual banquet about a possible trip to the museum for a behind the scenes tour to look at their mineral collections that are not currently on display.

Aaron did tell me that they are in the process of adding more mineral displays. There are many great minerals just sitting around and waiting for a spot to show their beauty.

I will talk with Aaron to get possible dates and times for this trip. I think the weekends would be best for most members, since we are not all retired yet.

Transportation should be easy, nice drive or the train. I will have more information at our next meeting.

MSSC WILL ATTEND---HELP NEEDED: by: Rudy Lopez

Science in the Park event on Saturday, April 29th and Prehistoric OC at the Ralph B. Clark Park Regional Park on October 14th

I have received an e-mail from Jeannine Pedersen-Guzman MA Associate Curator for Archaeology of The Dr. John D. Cooper Archaeology and Paleontological Center California State University Fullerton. She received information from Andrew Hoekstra from the Delvers G&MS about our Urban Festival displays.

They are inviting local organizations to participate and help educate the public about science, archaeology, paleontology, geology and biology. They are hoping to have clubs attend for one or both events.

The Copper Center is looking for Rock, Gem and Mineral clubs that might want to have some type of display tables at the Science in the Park events on Saturday, April 29th, 2017, at Irvine Regional Park and Prehistoric OC at the Ralph B. Clark Park Regional Park on October 14th, 2017.

What do they want us to do?

For the Science in the Park event on Saturday, April 29th, they would like mineral displays or anything we have for Kids or young adults. They will provide us with a canopy, tables and chairs for free.

For the Prehistoric OC at the Ralph B. Clark Park Regional Park on October 14th, they would like displays and live demonstrations. They will provide us with a canopy, tables and chairs for free.

I will provide more information at our next meeting.

WEST COAST GEM & MINERAL SHOW
MAY 19 - 21, 2017

Minerals ♦ Fossils
Gemstones ♦ Jewelry
Meteorites ♦ Beads
Decorator Items
Lapidary
Metaphysical



♦ FREE Admission
♦ FREE Parking
Open to the Public
Wholesale section
for Qualified Buyers

Grape Agate
Sulawesi, Indonesia
Photo by Jeff Scoville

SANTA ANA, CA ♦ HOLIDAY INN / ORANGE COUNTY AIRPORT
 2726 S. Grand Ave. (Take 55 Fwy Exit 8 for Dyer Rd. to S. Grand Ave.)

www.mzexpos.com Facebook.com/mzexpos

MSSC Advertisement Policy:		
Mineral-related ads are allowable in the MSSC bulletin. Below is the price per month		
	Business Card	\$5.00
	1/3 page	\$10.00
	1/2 page	\$20.00
	Full Page	\$35.00
<p>In addition, any advertiser who purchases 12 months of space in advance will receive a discount of 12 months for the price of 10 months. The copy for the ads should be mailed to the editor at bulletin@mineralsocal.org and the payment should be sent to the MSSC Treasurer 1855 Idlewood Road, Glendale, CA 91202</p>		

Calendar of Events:

Only local area shows are listed here. Other CFMS Club shows can be found at: <http://www.cfmsinc.org/>

MARCH

March 4 - 5: ARCADIA, CA

Monrovia Rockhound
 L. A. County Arboretum & Botanical Garden
 301 North Baldwin Avenue
 Hours: 9:00 - 4:30 daily
 Website: www.Moroks.com

March 4 - 5: VENTURA, CA

Ventura Gem & Mineral Society
 Ventura County Fairgrounds
 10 W. Harbor Boulevard
 Hours: Sat 10 - 5; Sun 10 - 4
 Website: www.vgms.org

March 11 - 12: SAN MARINO, CA

Pasadena Lapidary Society
 San Marino Masonic Center
 3130 Huntington Drive
 Hours: Sat 10 - 6, Sun 10 - 5
 Website: www.pasadenalapidarysociety.org
[Show Page](#)

APRIL

April 1 - 2: TORRANCE, CA

South Bay Lapidary & Mineral Society
 Ken Miller Recreation Center
 3341 Torrance Blvd (entrance on Madrona Ave)
 Hours: Sat. 10 - 5; Sun. 10 - 4
 Website: southbaylapidaryandmineralsociety.com
[Show Page](#)

April 7, 8 & 9: VISTA, CA

Vista Gem & Mineral Society
 Antique Gas & Steam Engine Museum
 2040 North Santa Fe Avenue
 Hours: 9 - 5 daily
 Website: www.vistarocks.org

April 22 - 23: PASO ROBLES, CA

Santa Lucia Rockhounds
 Paso Robles Event Center
 2198 Riverside Avenue
 Hours: Sat 10 - 5; Sun 10 - 4
 Website: www.slockhounds.org

April 22 - 23: THOUSAND OAKS, CA

Conejo Gem & Mineral Club
 Borchard Park Community Center
 190 Reino Road at Borchard Road
 Hours: 10 - 5 daily
 Website: www.cgamec.org

April 29 - 30: LANCASTER, CA

Antelope Valley Gem & Mineral Society
 Lancaster High School
 44701 32nd Street West
 Hours: 10 - 5 daily
 Website: www.avgem.weebly.com

MAY

May 5 - 7: YUCAIPA, CA

Yucaipa Valley Gem & Mineral Society
 Yucaipa Music & Arts Festival
 Yucaipa Blvd and Adams Street
 Hours: Fri 6 - 9; Sat 12 - 10, Sun 12 - 6
 Website: www.yvgms.org [Show Page](#)

May 6 - 7: ANAHEIM, CA

Searchers Gem & Mineral Society
 Brookhurst Community Center
 2271 W. Crescent Avenue
 Hours: Sat 10 - 5; Sun 10 - 4:30
 Website: www.searchersrocks.org

JUNE

June 2 - 4: LA HABRA, CA

North Orange County Gem & Mineral Society
La Habra Community Center
101 W. La Habra Blvd.
Hours: Fri 5 - 8; Sat & Sun 10 - 5
Website: www.nocgms.com

June 3 - 4: ESCONDIDO, CA

Palomar Gem & Mineral Club
California Center for the Arts
340 N. Escondido Blvd.
Hours: Sat 10 - 5; Sun 10 - 4
Website: www.palomargem.org [Show Page](#)

June 3 - 4, 2017: GLENDORA, CA

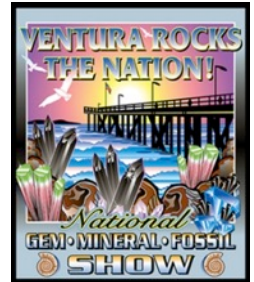
Glendora Gems
Goddard Middle School
859 E. Sierra Madre Avenue
Hours: Sat 10 - 5; Sun 10 - 4

June 9, 10 & 11, 2017: VENTURA, CA

2017 CFMS-AFMS Show & Convention

Ventura Rocks The Nation!

Hosted by Ventura County Gem & Mineral Society
Ventura County Fairgrounds
10 West Harbor Boulevard
Hours: Fri & Sat 10 - 5; Sun 10 - 4
Website: 2017CFMS-AFMSShow.com

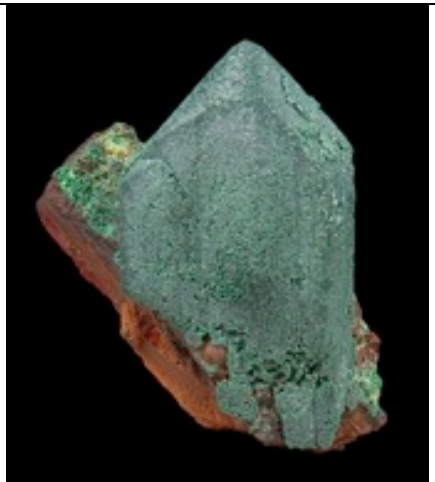


Featured Mineral: Malachite

Formula: $Cu_2CO_3(OH)_2$

Crystal System: Monoclinic

Name: Named in antiquity (see Pliny the Elder, 79 CE) molochitus after the Greek μαλαχή, "mallows," in allusion to the green color of the leaves. Known in the new spelling, malachites, at least by 1661.



irocks.com photo

Malachite Pseudomorph after Azurite: $Cu_2CO_3(OH)_2$
Locality: Sacramento pit, Sacramento Hill, Bisbee, Warren District, Mule Mts, Cochise Co., Arizona, USA
3.5 cm x 2.8 cm x 2.0 cm



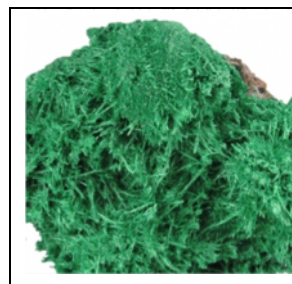
irocks.com photo

Malachite : $Cu_2CO_3(OH)_2$
Locality: Kolwezi District, Katanga Copper Crescent, Katanga, Democratic Republic of Congo. 7.8 cm x 6.7 cm x 0.6 cm



irocks.com photo

Malachite : $Cu_2CO_3(OH)_2$
Locality: Shilu Mine, Yangchun Co., Yangjiang Prefecture, Guangdong Province, China 23.5 cm



Malachite : $Cu_2CO_3(OH)_2$
Locality: [Milpillas Mine, Cuitaca, Mun. de Santa Cruz, Sonora, Mexico](#)
8.6 cm x 8.3 cm x 4.7 cm

irocks.com photo

2017 MSSC Officers:

OFFICERS		
President	Ann Meister	president@mineralsocal.org
Vice President	George Rossman	vicepresident@mineralsocal.org
Secretary	Angie Guzman	secretary@mineralsocal.org
Treasurer	Jim Kusely	treasurer@mineralsocal.org
CFMS Director	Jo Anna Ritchey	
Past President	Geoffrey Caplette	
DIRECTORS		
2016--2018	Bruce Carter	
2016--2018	Bob Housley	
2016--2018	Leslie Ogg	
2016-2017	Pat Caplette	
2016-2017	Pat Stevens	
COMMITTEE CHAIRS		
Bulletin Editor	Linda Elsnaу	bulletin@mineralsocal.org
Hospitality	Laura Davis	
Membership	Cheryl Lopez	membership@mineralsocal.org
Micro Mount Conf. Chairman	Al Wilkins	
Program and Education	Rudy Lopez	programs@mineralsocal.org
Publicity	Linda Elsnaу	bulletin@mineralsocal.org
Webmaster	Leslie Ogg	webmaster@mineralsocal.org

About the Mineralogical Society of Southern California

Organized in 1931, the Mineralogical Society of Southern California, Inc. is the oldest mineralogical society in the western United States. The MSSC is a member of the California Federation of Mineralogical Societies, and is dedicated to the dissemination of general knowledge of the mineralogical and related earth sciences through the study of mineral specimens. The MSSC is a scientific non-profit organization that actively supports the geology department at Pasadena City College, Pasadena, California. Support is also given to the Los Angeles and San Bernardino County Museums of Natural History. The Bulletin of the Mineralogical Society of Southern California is the official publication of the Mineralogical Society of Southern California, Inc.

The MSSC meetings are usually held the second Friday of each month, January, February and August excepted, at 7:30 p.m. in Building E, Room 220, Pasadena City College, 1570 E Colorado Boulevard, Pasadena, California. The annual Installation Banquet is held in January, and the annual Picnic and Swap Meeting is held in August. Due to PCC holidays, meetings may vary. Check the Society website for details.

The Society also sponsors the annual Pacific Micro mount Symposium held at the San Bernardino County Natural History Museum during the last weekend of January.

Annual Membership dues for the MSSC are \$20.00 for an individual membership, \$30.00 for a family membership. Bulletins are delivered by email, there is an additional annual \$20.00 fee if you prefer paper bulletins mailed to your address. The Society's contact information:

Mineralogical Society of Southern California

1855 Idlewood Rd.,

Glendale, CA 91202-1053

E-mail: treasurer@mineralsocal.org

Website: www.mineralsocal.org **The Mineralogical Society of California, Inc.**

Permission to reproduce and distribute original material published herein, in whole or in part, for non-commercial purposes, is hereby granted provided the sense or meaning of the material is not changed, the editor is notified, and the author's notice of copyright is retained. **All other articles used in our bulletins are with the specific permission of the author. Permission to use these documents must be obtained from the author for each use**

DISCLAIMER: The Mineralogical Society of Southern California, Inc. is not responsible, cannot be held responsible or liable for any person's injuries, damages or loss of property at or traveling to or from any general meeting, board meeting, open house, field trip, annual show or any other MSSC event.

MSSC Bulletin Editor
3630 Encinal Ave.
Glendale, CA 91214-2415

To:



**Your MSSC
Bulletin Is
Here!**

*With Knowledge Comes
Appreciation*