



Bulletin of the Mineralogical Society of Southern California

Volume 89 Number 8 - August, 2016

The 936th meeting of the Mineralogical Society of Southern California

With Knowledge Comes Appreciation

August 21st, 2016 from 12:00 Noon to 4:30 P.M.

Annual MSSC Picnic

Where: Bruce & Kathy Carter's house

In this Issue:

<i>TITLE</i>	<i>Page</i>
Program: MSSC Annual Picnic	2
From the Editor: Linda Elsnau	2
Meanderings from the President: Ann Meister	3
Minutes of the July 8th, 2016 Meeting	4
List of Upcoming MSSC Events	7
The Beginning of a Passion for Tourmaline: Pat Stevens	7
More About the Silent Auction: Rudy Lopez	7
A Request for the upcoming 2017 CFMS Show in Ventura, CA: Linda Elsnau	9
LA Urban Festival – 2017: Rudy Lopez	9
August Featured Mineral: Orpiment	10
Ride Share Listing	11
Calendar of Events	12
2016 Officers	13
About MSSC	13

Remember: If you change your email or street address, you must let the MSSC Editor and Membership Chair know or we cannot guarantee receipt of future Bulletins

About the Program:

MSSC ANNUAL PICNIC /SILENT AUCTION

YOU ARE INVITED MOROKS/ PLS/Fallbrook

Sunday, August 21st, from 12noon to 4:30pm is MSSC's annual picnic. We are going to invite three clubs to our picnic this year, MOROKS (Monrovia Rockhounds), PLS (Pasadena Lapidary Society) and Fallbrook. The location for the picnic is: Home of Bruce and Kathy Carter, 146 Highland Place, Monrovia, CA

THE LOCATION:

Home of Bruce and Kathy Carter, 146 Highland Place, Monrovia, CA

Bruce and Kathy's home is just north of Foothill Blvd and west of Mayflower Ave in Monrovia. Street parking is available. They have a beautiful back yard with shade structures and an outdoor kitchen. If it is too hot, then we can easily move into the air conditioned house.

Driving Directions from the 210 Freeway: Exit the 210 at Huntington Drive and go east to Mayflower Ave. Turn North to Foothill Blvd. Then go West one block to Highland Place. North to #146.

FOOD

I will again make Pull Pork and Brisket. I slow smoke the Pork Shoulder and Brisket up to 14 hours so they are really tender. So we are going to need more items to make a great meal.

We will need rolls for sandwiches for the Pull Pork and Brisket. Please bring your own special potluck offering to share: a salad (homemade or from the deli), chili, chips and dip, salsa or guacamole, a veggie tray, grapes, fruit salad, a jar of pickles or a can of olives; cookies, pie or other dessert item, or anything edible. Let's see what delicacies turn up this year! Leslie's Hawaiian Ice will make another appearance we hope. So let's all pitch in and make sure we have enough for everyone to enjoy. MSSC will supply plates, cups, napkins, knives, forks and spoons and will also supply water and ice. It is suggested you bring any serving utensils your contribution requires. Be sure to mark them and your serving dish with your name or initials so you're sure to get them back. All food items you bring should feed at least 8 people or more. Please let me know what items you intend to bring so we can coordinate with other members and guest so we don't have too much of one item.

Please RSVP by Tuesday, August 16 2016. It's really important that anyone from the other clubs that will attend bring food items and RSVP. Please send your RSVP and what you will bring to: programs@mineralsocal.org.

SILENT AUCTION

MSSC Members: Please contribute items for the Silent Auction

More about the Silent Auction on page 7

From the Editor: Linda Elsnau

Here we are at August already! Where does the time go? It seems the longer we live, the faster time flies. Remember when summers were an endless time of no school and sunny days to play? August also means it is time for MSSC's Annual Picnic. I hope everyone has kept the 21st free so you can come! Bring a serving of something yummy to share, something you can donate to the silent auction and your checkbook so you can participate in the auction shopping spree. This will be a good time for all!

As our President Ann Meister points out in her Meanderings, we are fast coming up on the annual election of Officers for MSSC. All of the current office holders have been in their jobs for much longer than any one should have to be. They all need a break from the jobs. Please consider where you can help the club where your interests or talents can be of use. These positions can become both interesting challenges and great learning experiences for the office holders. If you want to know more about any position you may be considering, please ask the current office holder what the job involves. Think about volunteering, you may find you really enjoy whatever position you try!

MEANDERINGS FROM THE PRESIDENT by Ann Meister

I've had two "wildlife" experiences this month. The first started with my neighborhood coyotes yipping up the street headed for their mountain den at 5:30 one morning. I looked out the window and saw them stop and sit in the road, looking down the street as if waiting for a companion. Then the "companion" came into view – it was a large, shaggy-looking yellow lab mix. They all sat there panting for a bit, obviously at ease with each other. After resting, first one and then the other coyote took off, loping up the long driveway the winds by several homes and gives access to a path into the wild. The lab, looking worn out, had lain down and was watching them leave. I went out to my mailbox and the lab watched me. He ended up resting on my doorstep. I was going to call animal control if he was still there when I was ready to go to work, but he was gone. Later, an associate at work told me that he had read about dogs, wolves and coyotes inter-breeding in the Eastern US. I wonder if that is happening here?

My other wildlife experience was sad. In the street gutter, near where I work, there were four dead raccoons laid out. We called animal control to pick them up. The officer said they had been shot, probably with a 22. This is in a residential area of Arcadia. What had happened? Who knows. Seems that someone can't live with our wildlife neighbors. I know they can be destructive to fish ponds, crawl spaces under houses, chimneys and attics, if you let them. But there are things that a homeowner can do to discourage them. Arcadia has a page on its website on how to deal with the wildlife, including a list and advice on how to keep wildlife off your property and out of your neighborhood. It's sad that someone didn't follow the advice.

Does anyone have the "official" **MSSC archives**? I don't know what's in the boxes; there should be a complete set of Bulletins, programs and pictures from shows, and other written records. Somehow, we have lost track of this. There used to be a position called "Historian" on the list of Committees at the back of the *Bulletin*. That was dropped at some time in the past and no one seems to know who has what. I'm not sure who was the last MSSC Historian. Please contact me if you have any of the archives or what should go into the archives.

I hope to see many of you at our upcoming **PICNIC** on August 21, where we will renew an earlier MSSC tradition: a summer **silent auction**. We have invited members of the Pasadena Lapidary Society, Monrovia Rockhounds and Fallbrook Gem and Mineral Society to join us. This should provide an opportunity to make new friends and renew long-standing friendships. It's always interesting to find out what other groups are doing. This is also an opportunity to bring items to the silent auction that may not be convenient to bring to the silent auction at the banquet. Rudy had pictures in the July *Bulletin* of some of the things that he is bringing, including lapidary equipment. How about the rock tumbler that you thought would be fun, but never use? Maybe you have a set of display case risers and liners, but don't exhibit in shows anymore? Or do you have an old tent or cook stove that you stuffed in the back of the closet or garage that is still serviceable? This is a chance to help MSSC while cleaning out clutter. All the usual items are also welcome, such as minerals, fossils, lapidary, gems, jewelry, geo-science books & magazines, mineral art & posters, and mining memorabilia. What's in your garage or closet that you could contribute?

I was delighted to see Marek at the July Von Kármán Lecture about the Dawn asteroid mission. For those interested, the **Von Kármán Lecture** on August 11 and 12 is titled "The Rosetta Mission: Comet C-G Up Close." Thursday is at the Von Kármán Auditorium at JPL and Friday is at the Vosloh Forum at PCC. Start time is 7 pm. The **UCLA Meteorite Gallery** talk is on Sunday, August 28 at 2:30. The speaker is Dr. Alan Rubin, a UCLA researcher and co-curator of the UCLA Meteorite Collection. The title of his lecture is "Comets - Icy Visitors from the Outer Solar System and a Major Source of Water and Carbon to the Earth." The Meteorite Gallery (Geology room 3697) is open with a docent present every Sunday from 1 till 4. The lecture is in Slichter Hall 3853 near the Meteorite Gallery.

The Democrats and Republicans have official nominees for President and Vice-President. What about MSSC? **Nominations** for MSSC officers (including President) and directors are coming up. We need candidates for 2017. Think about it...

MINUTES OF THE JULY 8th, 2016 MSSC MEETING

The **935th** Membership Meeting of the Mineralogical Society of Southern California (MSSC) was held at Pasadena City College on Friday, July 8, 2016. The meeting was presided over by President Ann Meister.

Call to order at 7:35 p.m. Ann thanked everyone for coming and welcomed guests Jim Walker now with Fallbrook; he was a member of MSSC for many years and member Ahni Dodge's husband, Mark Dodge.

Regular Business

- President Meister asked if there were any corrections or additions to the **June 2016 Membership Meeting Minutes** as published in the July 2016 *Bulletin*. Seeing none, she asked for a motion to approve them. A **Motion** was made by Rudy Lopez and seconded by Leslie Ogg to approve them. The vote was called and the motion **passed** unanimously;
- Ann announced that the deadline to submit articles or other items for publication in the August *Bulletin* is July 21st or July 22nd;
- The next Membership Meeting will be our annual Picnic on August 21, 2016 from Noon until 4:30p.m. at Bruce and Kathy Carter's back yard. There will be a Silent Auction in addition to the normal rocks, minerals, books things related to the hobby, serviceable collecting or camping gear and the like items will be included;
- The next Board meeting will be September 18, 2016. We will be putting together a slate of officers for next year. All members are invited to attend;
- Rudy Lopez's report of the 2nd Urban Nature Fest held at the Natural History Museum of Los Angeles County: Very successful for MSSC. Giveaway mineral specimens exceeded 800 pieces of various minerals. Thanks to Bob Housley, Leslie Ogg and Cheryl Lopez for the specimen samples. Micro mount minerals were again a great attraction and big hit. Plus, this year, the kids wanted to see their newly acquired minerals up close, so they, too, were put under the microscope to oohs and ahs. Also, a friend, Mike Brady, made two cases in which some of the Rudy and Cheryl Lopez Collection specimens were displayed. We are invited for next year's event and I'm already busy working on that event, having over 200 mineral handouts ready. Thanks to those that helped out at the Urban Fest;
- Donation from Nancy Brennan's husband's collection. There are about 30 boxes that she donated: obsidian, quartz, pyrite, malachite, lepidolite and other items that will be included in the Silent Auction at the Picnic.

Announcements

- The California Federation of Mineralogical Societies Convention will be held September 16-18, 2016 in Placerville, CA. Angie Guzman will go as alternate to our representative JoAnna Ritchey;
- The von Kármán Lecture Series this month will be Thursday, July 14 at JPL and Friday, July 15 here at PCC. The topic is "*Go Boldly... Well, You Know: NASA's Dawn Mission to the Asteroid Belt*". For more information, please go to the JPL website: www.jpl.nasa.gov/events/lectures;
- UCLA Meteorite lecture will be July 17th, then on August 28th Dr. Alan Rubin will speak on "Comets Icy Visitors from the Outer Solar System and a Major Source of Water and Carbon to Earth";
- Refer to the letter concerning the International Union for Conservation of Nature (IUCN), which is holding a conference in Hawaii in September 2016. IUCN is considering making geo-heritage items of minerals, fossils, archeological artifacts and other items. This action may present a huge threat to collecting, owning, selling and buying such items. There was concerned discussion on this topic. George Rossman mentioned a certain brass plaque literally embedded in the rock in the Czech Republic designating one of their national monuments. The IUCN website has more information on this issue. Ann called for comments to be made on this proposal, Motion 091. For more information and to voice your comments, please visit their website at www.iucn.org;
- Board Minutes will be approved by the Board at their next meeting.

Program

The meeting was turned over to Rudy Lopez, Program Chair. Rudy mentioned that there may be speaker changes so check the *Bulletin* for updated listing; although speakers are lined up to September 2017 the order may be changed.

Rudy introduced Justin Seastrand from the U. S. Dept. of Agriculture's Forest Service who is the speaker this evening. Justin Seastrand, a repeat speaker, is accompanied by Andrew their Public Affairs representative who will film the presentation, but only of the speaker.

Justin indicated that some of the information tonight may be repeats from his prior presentation of December 2015 (refer to the January 2016 *Bulletin*). This presentation is an overview of the San Gabriel Mountains National Monument, so designated by President Barak Obama in October 2014 and the status of the National Monument planning process that will conclude soon. Justin passed around a hand-out he prepared for this evening's presentation.

Justin said that his department has been working on the San Gabriel Mountains National Monument Plan. Refer to http://www.fs.fed.us/nepa/nepa_project_exp.php?project=46964 for full information and a Project Documents list. *[Secretary's Note: Included on the Project Documents list is an item posted June 8, 2016, San Gabriel Mountain National Monument_ Key Messages and Schedule_ April 2016 Update (pdf file). Click on it get to the three page "Key Messages..." On the 3rd page of Key Messages is a listing of Upcoming Milestones. Please review that schedule so you can stay informed about the progress of the planning aspect.]* **The department's document will be published for the official public comment period. The release date is August 1, 2016 and there will be a 60-day period in which comments will be accepted. Regionally, there will be 4 public meetings. Rudy will follow up for dates and places.**

When the President signed the proclamation making the San Gabriel Mountains federal land he designated them into a national monument. He also said he *withdrew* them from the Federal Mineral Act of 1947. That means that you, or anyone, are no longer able to file mining claims in any of those acres; thousands of acres of land cannot have new mining claims in the San Gabriels. That does not, however, take away the ones already in existence at the time of the designation. So, sand and gravel, for instance, may continue to be mined by authorized claim holders. Meanwhile, there are a few gold claims still on the books and that is the only way gold can be mined today, since October 2014.

The proclamation considered recognition of urban proximity, endangered species, the geology of the San Gabriels and diversity of surrounding population. The Forest Service's plan takes into account those concerns and addresses them through conservation education thereby making a commitment to help manage the national monument in compliance with the proclamation.

Collecting for personal use is an issue we discussed in December 2015 and it is of great concern to MSSC. The official answer is that regulations dictate that a permit is required. There is no other way to collect rock or minerals. However, in the field it is a gray area but the Forest Service is stuck with the regulations.

At this point, there was discussion regarding Wilderness (Congressional bill) Vs. National Monument (Presidential Proclamation) – which may overlap; These regulations apply to National Monument, not other lands; Core drilling and high speed rail; Possible reversal of designation? No Increase in funding? Yes; and other related topics.

Minerals Program at Angeles National Forest three main parts: (1) saleable: sand and gravel, (2) locatable materials: hard rock, copper, gold, tungsten, and (3) leasable minerals: oil, gas, potash, pipelines, geothermal minerals.

Withdrawals much of the land in Angeles National Forest is no longer subject to mining authorities.

Existing claims are incorporated in the proclamation such as the one on the books from 1916, the Monte Cristo Mine claim.

Justin went on to discuss other use permits such as cabin permits. He again touched on the core drilling for the high speed rail and testing for those 8 location tunnels. The high speed rail is planned between San Francisco Bay and downtown Los Angeles.

One of the points on his hand-out was about opportunities for invertebrate fossil and mineral collecting for noncommercial personal use. He reminded us that permits are issued in limited quantity. They are specific to research, not for resale of material. The process to obtain a permit is cumbersome, as well. There is paperwork involved and the permit may not (probably won't) be issued the same day. The approved permits can be issued for 1yr, 2yrs, or up to 5yrs (research). There is a cost for the permits, however fees may be waived or exempted, depending on the criteria for the permit. The minimum fee is \$60/yr.

George Rossman posed the question again about collecting for personal use and, in conjunction with field study for academic students. Can a person go into the NM, pick up a mineral or rock and put it in his/her pocket and take it home? Justin's reply was "No". As for academia, the answer may be different. Justin said it depends on the decision maker for the permit and the proposal that you submit to get the permit. Ann Meister made this point: if you're trying to train people to become natural scientists and part of that education is field work, why would collecting for education be prohibited? It defeats the purpose. Justin mentioned conservation education, kid's programs, safety and other promotions.

Justin continued with 36 Code of Federal Regulations (CFR) 261:

36 Code of Federal Regulations §261.9 Property states, the following are prohibited:

- (a) Damaging any natural feature or other property of the United States.
- (b) Removing any natural feature or other property of the United States.

36 Code of Federal Regulations §291 – Ban on fossil collecting without a permit – definition *Paleontological resource* means any fossilized remains, traces, or imprints of organisms, preserved in or on the earth's crust, that are of paleontological interest, and that provide information about the history of life on earth. The term does not include:

- (1) Any materials associated with an archaeological resource (as defined in section 3(1) of the Archaeological Resources Protection Act of 1979 (16 USC 470bb(1)); or
- (2) Any cultural item (as defined in section 2 of the Native American Graves Protection and Repatriation Act (25 USC 3001)).

Great lively discussions followed: Would the Forest Service be willing to designate a mineral area? (Garnets at) Mt Gleason, Mill Creek Station and other sites were mentioned. Further discussion on these portions continued. Is SVP, Society for Vertebrate Paleontologists, exempt from obtaining a permit? Justin doesn't think so but certainly no special treatment would apply. What about meteorites – not of this earth, or newly discovered minerals and other similar situations? The answer is to go back to the letter of the law, the regulations allow for a "maybe". It's a case by case basis. Panning is out because that's mining.

So to reiterate, the Forest Service Plan will be out August 1, 2016. After that there will be a 60-day public comment period. There will be 4 regional opportunities to voice your opinion and offer suggestions.

Feel free to stop by the office for information, documentation and conversation about the Plan. The office is located at: 701 N Santa Anita Ave., Arcadia, CA 91006. Phone (626)574-5278. Visit the website for information, sign up for e-mail updates and Plan status.

http://www.fs.fed.us/nepa/nepa_project_exp.php?project=46964 and www.ecfr.gov for regulations.

Thank you, Justin, for an informative and interesting presentation and the lively discussions!

BJ Ledyard announced that the California Geology class at PCC has been cancelled for the Fall 2016 semester; "*Roadside Geology of Southern California*" is now available in bookstores and on line.

The **door prize** drawing was won by Renee Kraus. Congratulations!

Adjournment was called at 9:15p.m. Refreshments served after adjournment.

See you at the pot-luck Picnic on August 21, 2016, Noon – 4:30pm! Don't forget your Silent Auction items!

List of Upcoming MSSC Events : Mark your Calender!

Event	Date	Comments / Scheduled Program (if known)
Meeting Dates:	September 9, 2016	Gabriel Mosesson - Ethiopian Opals Part 2
	October 14, 2016	Dr. George Rossman - Topaz - Sources, Color, & Treatments
	November 11, 2016	Chuck Hawser: Geology from So Cal up the Owens Valley to the Bishop/Mammoth area, from a small plane.
	December, 9, 2016	Leslie Neff & Larry Hoskinson - A Tourists Guide to Finding Opal in Cooper Pedy Australia
Annual Banquet	January , 2017	Aaron Celestain - LA Museum Director-- <i>to be announced</i>
Board Meeting	September 18, 2016	Board Meeting at Bruce Carter's house

Note: Dates and programs shown above are subject to change. Check your bulletins to confirm final information each month.

The Beginning of a Passion for Tourmaline by Pat Stevens

It was early in the 1970's when National Geographic magazine ran a several page article on rockhounding. The article had two short paragraphs devoted to tourmaline. One of the sentences went something like this – the miner plucked a six-inch long, strawberry colored tourmaline worth perhaps two thousand dollars from the bowels of the earth. The place was Pala, California and the mine was the Tourmaline Queen mine.

At that time, I was younger than a teenager but knew that Pala was in San Diego County and I had no way to get there. These paragraphs were inspiring and so began my passion. It wasn't until July of 1977 that I was able to journey to Pala. The Orange County Natural History museum was leading a field trip to the Stewart Mine on my birthday. My dad agreed to take me and the fee was only five dollars. I recall that I barely slept the night before our field trip.

We and perhaps a few scores of people were able to collect on the mine dump for approximately three hours before the field trip was over. An older man explained that I was looking for pink striated pencil like crystals. It took a while to comprehend that description. At the end of the day I had found some quartz crystals, several altered tourmalines, a small, half-inch long pink tourmaline and a bubble-gum pink terminated pencil that weighed 17 grams. It was the finest crystal that anyone on the field trip found that day. At that point I was hooked on tourmaline and made several trips to the mine with the permission of the tour operator. If you are wondering, I still have that 17-gram tourmaline.

More About the Silent Auction At the Picnic by Rudy Lopez

We are going to have a silent auction and I am encouraging everyone to bring items for the silent auction. I have been cleaning my storage boxes and have found some really great slabs. I found agate, moss agate, tiger eye, fossils, palm root, obsidian (black, mahogany, rainbow and silver streak) and I will have at least 50 or 60 slabs alone. I will bring some obsidian pieces that weight anywhere from 10lbs to 30lbs. I will also bring agate rocks weighing about 25lbs, lepidolite, tiger eye and other rocks. I have a small 7" rock saw and a jewelry buffer I will put up for auction and I am still looking through my finished cabs . SO, let's all pitch in and bring items for the silent auction. Please understand anything that does not sell the day of the picnic will go back home with the original owner. There will be tables for your auction items and bid sheets. Please look at the pictures I have attached of just a few items I will bring for the silent auction. Items will be priced to sell, but not given away.

No, this isn't the specimen mentioned in the article, just another fine Pala District specimen for your enjoyment.



Irocks.com photo

Tourmaline (Elbaite)
Himalaya Mine, Gem Hill,
Mesa Grande District, San
Diego Co., California, USA
6.8 cm x 3.4 cm x 2.5 cm

Those of you who are so inclined may bring items for the silent auction. Please bring items that are related to our hobby – minerals, fossils, lapidary, gems/jewelry, geo-science books, and mining memorabilia. **MSSC members please contribute items to the auction.** It all benefits MSSC!

Check out the pictures below of what is going up for auction at the picnic. (So Far!)





A Request for the upcoming 2017 CFMS Show in Ventura, CA: Linda Elsnau

The following request was included along with my exchange bulletin copy this month:

Rock Box Swap; if your club is interested in doing a swap of local (to your area) rocks, minerals and/or fossils, please let me know as soon as possible. Ventura Gem & Mineral is hosting the 2017 AFMS/CFMS Show next June, and I plan on featuring this project in a case. I think it would be a fun tie-in to our 'Ventura Rocks the Nation!' theme. There's more information on our website:

<http://vgms.org/category/activities/>

Thanks, Angela Brown, *Editor, "Rockhound Rambling"*. www.vgms.org

If you have material you would like to swap, please contact Angela directly at: vgmseditor@gmail.com

LA URBAN FESTIVAL 2017 - CHILDREN MINERAL BAGS: By: Rudy Lopez

We had a great time at the 2016 LA Urban Festival at the Natural History Museum last month. We had over 1000 attendees stop at our tables and ask a bunch of questions and enjoy our mineral display.

We made about 800 children happy by giving them a mineral to start their collections. Robert Housley gave a few boxes of quartz from Thousand Oaks Blvd. in Agua Hills make a big hit. Leslie send boxes of Fluorite pieces that kids learned was in tooth paste.

It's not too early to start getting donation started for next year. We have received a donation from Nancy Brennan that will help but we will need more.

We need small minerals that we can bag up to give away, if they are identified and where they came from it helps make it more collectable to the children.

So! Please look around and see if there is a box of minerals taking up space in your closet, garage, storage shed, under your bed or where ever you hide them that you don't want.

You can bring all donations to a meeting and give them to me or if there are too many I will pick them up. Never too early to start collecting for next year, I this we will need about 1000 pieces. We already have about 200 items already.

With Knowledge comes Appreciation

Featured Mineral: **Orpiment**

System: Monoclinic

Color: Orange red, Orange-yellow to lemon-yellow

Luster: Pearly

Hardness: 1½ - 2

Name: From Latin "aurum", gold, and "pigmentum", pigment, in allusion to its color.



irocks.com photo

Orpiment : As_2S_3

Locality: Twin Creeks Mine,
Potosi District, Osgood Mts,
Humboldt Co., Nevada, USA
3.3 cm x 2.1 cm x 2.1 cm



irocks.com photo

Orpiment : As_2S_3 ,

Calcite : CaCO_3

Locality: Jiepaiyu Mine, Shimen
As- deposit deposit), Shimen Co.,
Changde Prefecture, Hunan Province,
China
5.3 cm x 5.2 cm x 2.8 cm



irocks.com photo

Orpiment : As_2S_3

Locality: Melco deposit, Barney's
Canyon, Bingham District, Oquirrh
Mts, Salt Lake Co., Utah, USA
2.3 cm x 1.9 cm x 1.8 cm



irocks.com photo

Orpiment : As_2S_3

Locality: Quiruvilca Mine,
Quiruvilca District, Santiago de
Chuco Province, La Libertad
Department, Peru
2.8 cm x 2 cm x 1.9 cm



irocks.com photo

Orpiment : As_2S_3

Locality: Twin Creeks Mine, Potosi
District, Osgood Mts, Humboldt Co.,
Nevada, USA
4.5 cm x 3.8 cm x 2.8 cm



irocks.com photo

Orpiment : As_2S_3

Locality: Quiruvilca Mine,
Quiruvilca District, Santiago de
Chuco Province, La Libertad
Department, Peru
3.5 cm x 3.2 cm x 3 cm

Ride Share Listing

Can You Provide A Ride?

Would You Like Company On The Drive To Meetings?

We have heard from several of our members that they would like to ride-share with someone to the meetings. We will list the names, general location and either a phone number or an email address of anyone who would like to connect for a ride-share. If you would like to catch a ride or would like company for the trip, let me know at msscbulletin@earthlink.net and I'll put the information in this section of the bulletin. After that, any final arrangements made are up to you. Also, If you make a connection that works for you, let me know so that I can remove your information from the bulletin. The Editor

Looking for	Who	Where	Contact at
A ride	Richard Stamberg	North Orange County, near Cal State Fullerton	
A ride	Catherine Govaller	San Bernardino, CA	

WEST COAST GEM & MINERAL SHOW

NOV. 11 - 13, 2016

SANTA ANA, CA

Holiday Inn - Orange County Airport
2726 S. Grand Ave.
(55 Freeway exit 8 for Dyer Rd. to S. Grand Ave.)

80 Great Dealers

Minerals ★ Fossils ★ Gemstones
Jewelry ★ Beads ★ Decorator Pieces
Meteorites ★ Lapidary ★ Metaphysical



Amazonite with Smoky Quartz
Smoky Hawk Claim, Teller Co., CO
Photo by Jeff Scovil©

FREE Admission ★ FREE Parking ★ Retail Wholesale For Qualified Buyers

Show Hours: Fri. & Sat. 10 - 6 ★ Sun. 10 - 5

LLD Productions, Inc., P.O. Box 665, Bernalillo, NM 87004, Fax: (303) 223-3478, mzexpos@gmail.com
www.mzexpos.com facebook.com/mzexpos

MSSC Advertisement Policy:			
Mineral-related ads are allowable in the MSSC bulletin. Below is the price per month			
	Business Card	\$5.00	
	1/3 page	\$10.00	
	1/2 page	\$20.00	
	Full Page	\$35.00	
In addition, any advertiser who purchases 12 months of space in advance will receive a discount of 12 months for the price of 10 months. The copy for the ads should be mailed to the editor at bulletin@mineralsocal.org and the payment should be sent to the			
MSSC Treasurer 1855 Idlewood Road, Glendale, CA 91202			

Calendar of Events:

Only local area shows are listed here. Other CFMS Club shows can be found at: <http://www.cfmsinc.org/>

AUGUST

August 5 - 7: NIPOMO, CA

Orcutt Mineral Society
Nipomo High School
525 North Thompson Avenue
Hours: Fri/Sat 10 - 5; Sun 10 - 4
Website: www.omsinc.org [Show Page](#)

SEPTEMBER

September 16 - 18: PLACERVILLE, CA

77th CFMS Show & Convention
Hosted by El Dorado County Mineral & Gem Society
El Dorado County Fairgrounds
100 Placerville Drive
Hours: Fri - Sun 10 - 5 daily
Contact: Barbara Terrill, 530 676-2375
Email: info@rockandgemshow.org
Web Site: www.cfms2016show.com

OCTOBER

October 1 - 2: BORON, CA

Mojave Mineralogical Society
Boron Recreation Park
26998 John Street
Hours: Sat 9 - 5; Sun 9 - 4

October 1 - 2: VISTA, CA

Vista Gem & Mineral Society
Antique Gas & Steam Engine Museum
2040 North Santa Fe Avenue
Hours: Sat 10 - 5; Sun 10 - 4

October 8 - 9: TRONA, CA

Searles Lake Gem & Mineral Society
SLGM Show Building
13337 Main Street
Hours: Sat 7 - 5; Sun 7 - 4
Website: www1.iwvisp.com/tronagemclub

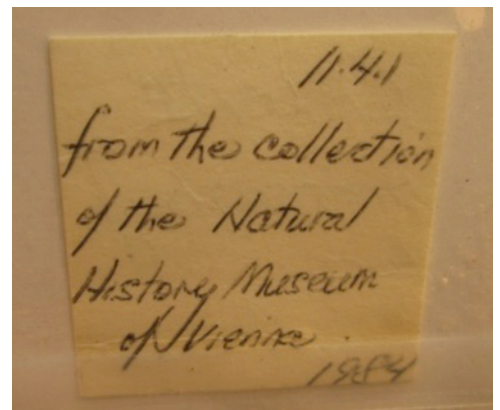
October 15: WEST HILLS, CA

Woodland Hills Rock Chippers
First United Methodist Church
22700 Sherman Way
Hours: 10 - 5
Website: www.rockchippers.org

October 15 - 16: WHITTIER, CA

Whittier Gem & Mineral Society
Whittier Community Center
7630 Washington Avenue
Hours: 10 - 5 daily

An interesting Calcite Thumb-nail. Thanks to Gene Reynolds for sending the Pics



2015 MSSC Officers:

OFFICERS		
President	Ann Meister	president@mineralsocal.org
Vice President	George Rossman	vicepresident@mineralsocal.org
Secretary	Angie Guzman	secretary@mineralsocal.org
Treasurer	Jim Kusely	treasurer@mineralsocal.org
CFMS Director	Jo Anna Ritchey	
Past President	Geoffrey Caplette	
DIRECTORS		
2015--2016	Bruce Carter	
22015--2016	Bob Housley	
2015--2016	Leslie Ogg	
2016-2017	Pat Caplette	
2016-2017	Pat Stevens	
COMMITTEE CHAIRS		
Bulletin Editor	Linda Elsnau	bulletin@mineralsocal.org
Hospitality	Laura Davis	
Membership	Cheryl Lopez	membership@mineralsocal.org
Micro Mount Conf. Chairman	Al Wilkins	
Program and Education	Rudy Lopez	programs@mineralsocal.org
Publicity	Linda Elsnau	bulletin@mineralsocal.org
Webmaster	Leslie Ogg	webmaster@mineralsocal.org

About the Mineralogical Society of Southern California

Organized in 1931, the Mineralogical Society of Southern California, Inc. is the oldest mineralogical society in the western United States. The MSSC is a member of the California Federation of Mineralogical Societies, and is dedicated to the dissemination of general knowledge of the mineralogical and related earth sciences through the study of mineral specimens. The MSSC is a scientific non-profit organization that actively supports the geology department at Pasadena City College, Pasadena, California. Support is also given to the Los Angeles and San Bernardino County Museums of Natural History. The Bulletin of the Mineralogical Society of Southern California is the official publication of the Mineralogical Society of Southern California, Inc.

The MSSC meetings are usually held the second Friday of each month, January, February and August excepted, at 7:30 p.m. in Building E, Room 220, Pasadena City College, 1570 E Colorado Boulevard, Pasadena, California. The annual Installation Banquet is held in January, and the annual Picnic and Swap Meeting is held in August. Due to PCC holidays, meetings may vary. Check the Society website for details.

The Society also sponsors the annual Pacific Micro mount Symposium held at the San Bernardino County Natural History Museum during the last weekend of January.

Annual Membership dues for the MSSC are \$20.00 for an individual membership, \$30.00 for a family membership. Bulletins are delivered by email, there is an additional annual \$20.00 fee if you prefer paper bulletins mailed to your address. The Society's contact information:

Mineralogical Society of Southern California

1855 Idlewood Rd.,

Glendale, CA 91202-1053

E-mail: treasurer@mineralsocal.org

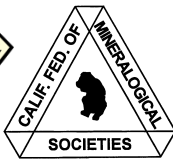
Website: www.mineralsocal.org **The Mineralogical Society of California, Inc.**

Permission to reproduce and distribute original material published herein, in whole or in part, for non-commercial purposes, is hereby granted provided the sense or meaning of the material is not changed, the editor is notified, and the author's notice of copyright is retained. **All other articles used in our bulletins are with the specific permission of the author. Permission to use these documents must be obtained from the author for each use**

DISCLAIMER: The Mineralogical Society of Southern California, Inc. is not responsible, cannot be held responsible or liable for any person's injuries, damages or loss of property at or traveling to or from any general meeting, board meeting, open house, field trip, annual show or any other MSSC event.

MSSC Bulletin Editor
3630 Encinal Ave.
Glendale, CA 91214-2415

To:



**Your MSSC
Bulletin Is
Here!**

*With Knowledge Comes
Appreciation*