



The 882nd Meeting of the Mineralogical Society of Southern California

Program: GIA International Expedition Team to Prove Existence of Tibetan Andesine Mines by Brendan Llaurs

**Banquet January 21 2012 5:30 pm (dinner 7:30)
Oak Tree Room (next to Coco's)
1150 West Colorado Boulevard
Arcadia, CA 91007**

In this issue:

GIA International Expedition Team to Prove Existence of Tibetan Andesine Mines by Brendan Laura	2
Meanderings from the President - Ann Meister	3
Minutes of the 12/09/2011 General Meeting	3
MSSC Banquet 1/21/2012	4
Exhibition Highlights of All That Glitters, San Diego Museum thru 4/8/2012	5
GIA International Expedition Team 9/26-10/2/2010	6
Introduction of Tibet Andesine	7
Tibetan Andesine	8
Book Report and Excerpt of Martin Ehrmann experiences in Mogok, Burma	8
CFMS Field Trips-North Topaz Mt. & Dugway Geode Beds 4/5-4/9/12	9
American Lands Access Association, PLAC/ALAA Joint Meeting	9
Pacific Micromount Conference Agenda	11
Earth Science Study Camps Report	12
Ten Steps to Failure as a Leader by Don Ogden	13
Calendar of Events	14
Society Officers	15
About MSSC	16
Pacific Micromount Conference Registration Form	17
2012 MSSC Membership Dues Form	18
CFMS Zzyzx Registration Form	19

On January 1, 2012 DUES ARE DUE



Azurite from New Mexico - Crystal Classics specimen, Haywards Heath Mineral Show 2011

Attached is some biographical information from Brendan Laurs. His talk will cover his Sept. 2010 field research in Tibet on gem-quality red andesine. He will explain the controversy surrounding this material, the geology and occurrence of the andesine, and also show what it is like to travel in this remote and beautiful part of the world.



Brendan Laurs (M.S., G.G.) is Editor and Technical Specialist of *Gems & Gemology* at the Gemological Institute of America (GIA) in Carlsbad, California. He is a gemologist and geologist specializing in the formation of colored gemstone deposits. Brendan developed an early interest in geology while exploring the gem-bearing pegmatites of San Diego County. He obtained a B.S. degree in geology at U.C. Santa Barbara and an M.S. degree in geology from Oregon State University. He was an exploration geologist for colored gemstones (benitoite and red beryl) with Kennecott Exploration Co. before joining GIA in 1997. In 2006, he co-chaired GIA's first-ever Gemological Research Conference in San Diego, and in 2011 he co-chaired the research track of the 5th GIA International Gemological Symposium in Carlsbad. A frequent traveler to global gem sources, Laurs has published numerous articles and spoken at technical conferences and gem and mineral gatherings.

GIA International Expedition Team

(from Internet [www. http://xz-tys.com/en/iList.asp?id=21](http://xz-tys.com/en/iList.asp?id=21))

In order to prove the existence of Tibetan Andesine Mines for the second time, an international group had made a field expedition to the mining areas in Tibet from 26th September to 2nd October 2010. This international expedition group includes Ahmadjan Abduriyim (GAJ), Brendan Laurs (GIA) and Thanong Leelawatanasuk (GIT) together with independent experts, i.e., Richard W. Hughes (well-known gemologist), Flavie Isatelle (research geologist, France) and Young Sze Man (Jewellery News Asia, Hong Kong) with the support from Christina Lu (M.P. Gem Corp.). The expedition began in Lhasa, the capital of Tibet. The group finally arrived at Bailang and Zhalin mines which locate at the altitude of 4500 m near Shigatse city. In order to be sure that these gemstones do occur naturally, Ahmadjan and the other foreign experts were crossing the high maintains, observing and deducing the formation of the soil and the rock. The whole group had attempted to randomly select the digging sites around the area. Without assistance from any local villager, Richard W. Hughes, Brendan Laurs (GIA) and Thanong Leelawatanasuk (GIT) even came to undisturbed spot to dig pits and finally discovered the red andesines in the earth under the bush. The andesines found beneath the bush proved beyond doubt that the Tibetan red andesine mines are genuine. All the experts in the group confirmed that Tibetan red andesines are genuine. This field research settled the most important dispute on Tibetan red andesine in the gem stone markets worldwide.



MEANDERINGS FROM THE PRESIDENT by Ann Meister

Kudos to our December speaker, Lisbet Thoresen. Her presentation on garnets found in ancient jewelry, sealstones and other artifacts from archeological digs shows how cross pollination among disciplines can further the knowledge for all. Garnets were selected for the study since they are (relatively) abundant in the artifacts of the ancient world and there is an existing body of data about them in the mineralogical and gemological literature. Our own MSSC member Dr George Rossman from Cal Tech figures prominently in this story because it was at his suggestion that he and Dr Thoresen undertook the scientific analysis of various garnet artifacts to compare the results with garnets already studied and analyzed. Could they find possible geographical sources of the stones? And of those stones which appeared similar, might they be from the same site?

My interest in stones in artistic stuff began when viewing treasures in museums and religious artifacts in old churches and wondering what the stones were and where they came from. The curators and docents who were there to answer questions were usually knowledgeable in the history of the item and its historical context. They were academics trained in history, art and perhaps archeology, but usually not in mineralogy or gemology. When I asked about the stones, I was treated as an insubordinate troublemaker for asking such a question. I was told that it is the artistic or historical merit of the piece which should be admired. To me, it adds to the “historical” merit to know where the gem came from since it would indicate trade routes, perhaps where the artisan workshops were, and a mining industry that may be totally historical, but may also exist in the modern world. But that is outside the purview of the art historian.

To shorten a long story -- why study mineralogy today? Is it a “dead” science? All minerals have been described, their properties cataloged. What more is there to do other than find smaller bits to identify? Perhaps we should use all this cataloged data to expand the knowledge base in other seemingly unrelated disciplines, such as art history and archeology? Where would one find an interdisciplinary major of mineralogy and art or archeology? Then add in gemology and lapidary studies? Can there be cooperation between the left-brained scientific community and the right-brained artistic community? Can there be interdisciplinary communication? Let’s hope so.

In this spirit of cooperation and communication, we welcome the Gem and Mineral Council of the Los Angeles County Museum of Natural History to our Annual Installation Banquet on January 21, 2012.

Minutes of the December 9, 2011 Meeting

The 883rd meeting of The Mineralogical Society of Southern California was held on Friday, December 9, 2011, at Pasadena City College, Pasadena, CA. President Ann Meister brought the meeting to order at 7:37 p.m.

The following business and announcements were made:

- (1) Minutes of last month’s meeting were approved.
- (2) The banquet will be held on January 21, 2012 at its usual location of the Oak Tree Room in Pasadena. Cost will be \$35.

(3) Nominations for next year's slate of officers were presented, and will remain the same except for replacement of the Secretary by Angela Guzman. Motions were made and unanimously approved to close nominations and approve the slate of officers.

The evening's speaker was Lisbet Thoresen who is an expert on preservation, analysis, authentication, and conservation of classical antiquities, and has focused on archaeometric studies on gems of the ancient world. Ms. Thoresen gave a fascinating presentation titled "Archaeological Science and the Historography of Garnets: Prehistory to the Early Dark Ages."

Fourteen people attended the meeting.

Bob Griffis won the door prize.

President Meister brought the meeting to a close at 9:15 p.m.

Respectfully submitted, Robert Griffis, Secretary

MSSC Banquet January 21, 2011

This Banquet & Meeting will be held jointly by MSSC and the Natural History Museum Gem and Mineral Council.

The cost of the Banquet will be \$35.00. **Make you reservation with Jim Kusley** (treasurer@mineralsocal.org). There is limited seating as the NHM Gem & Mineral Council is joining us. Shame to miss this event because you delayed making that reservation.

Plan to pay your dues at the same time. Dues are officially due 1/1/2012.

The speaker will be Brenden Laurs (GIA) who will speak on his experiences in Tibet. More information about his talk is on page 2.

Banquet January 21 2012
Social Hour 5:30 pm: Dinner 6:30 pm; Speaker 7:30 pm
Oak Tree Room (next to Coco's)
1150 West Colorado Boulevard
Arcadia, CA 91007

Items for the Silent Auction are always needed. What is gathering dust in your home will be treasured in some one else's home.

Federation Director

As your Federation Director, I would like the MSSC to remind the CFMS and all its members that mineralogists are still an active part of the organization by having a lot of good mineral cases at the next CFMS Show that will be in Riverside. The Show will have security in the exhibit area, and you may or may not put your name on your case, but I really want MSSC to be represented.

Dues are Due

Surprise our Treasurer and everyone pay before you are delinquent!!

West Coast
GEM & MINERAL SHOW

Holiday Inn - Orange County Airport
2726 S. Grand Ave., Santa Ana, CA 92705
(Take 55 Fwy exit 8 for Dyer Rd. to S. Grand Ave.)

MAY 11-13, 2012

90 Top Quality Dealers!

Minerals • Fossils • Gemstones • Jewelry • Beads
Meteorites • Lapidary • Metaphysical Supplies

FREE ADMISSION • FREE PARKING
WHOLESALE • RETAIL

Show Hours: Fri. & Sat. 10 - 6 • Sun. 10 - 5

Martin Zinn Expositions, L.L.C., P.O. Box 665, Bernalillo, NM 87004
Fax: (303) 223-3478, mzexpos@gmail.com, www.mzexpos.com



California Gold
Jeff Scovil Photo©

EXHIBITION HIGHLIGHTS of ALL THAT GLITTERS, The Spendor & Science of Gems & Minerals

Exhibit at the San Diego Natural History Museum from May 15, 2010 through April 8 2012 (Copy this link to your browser: <http://www.sdnhm.org/exhibits/allthatglitters/> for more information).

THE HISTORY

Gems and mineral finds in San Diego County

California is one of the few places in the world where crystallized gold is found in significant amounts. Most gold is locked up in surrounding rock, but in California, there was enough space in the rock for the gold crystals to grow, forming large crystals.



When gold was discovered in the Sierra Nevada foothills in 1848, thousands swarmed west seeking their fortune. Hunger for gold turned California from a remote wilderness into a thriving hub. Twenty years after the '49ers, [San Diego County had its own gold rush](#) after gold was spotted in a creek west of the town of Julian.



Click to enlarge

Much of the gems and gold in our region has been mined already. But the mines still lie nestled in the mountains to the east of San Diego. These mountains are made of volcanic rock that formed

between 93 million and 120 million years ago. So the gems and gold mined there are around 100 million years old.

San Diego's hidden treasure pockets

Our rugged mountains conceal natural marvels. Hidden gem pockets formed close to 100 million years ago in rock deposits called **pegmatites**. Pegmatites are rock formations caused by magma (molten rock) rising from deep in the Earth and penetrating existing rock near the surface. Under the right conditions, as the magma cools, gems can crystallize inside sealed pockets. Mining of California's pegmatite deposits began in the 19th century. Miners tunnel into a pegmatite dike, find a pocket, and remove the gems by hand.



[Click to enlarge](#)

Tourmaline, our star local gem

A rosy stone put San Diego County's mines on the map. Pink tourmaline was discovered in local pegmatite mines late in the 19th century. It was a lucky find. China's Empress Dowager had a fondness for the gem, triggering a craze in her country. Before her death in 1911, 120 tons of

tourmaline had been mined locally. Most of it was sent to China. The Himalaya Mine was California's biggest producer of tourmaline at the dawn of the 20th century.



[Click to enlarge](#)

California's state gem

The Golden State is home to a unique blue stone. It's called **benitoite**, and it's California's official state gem. Benitoite was discovered in 1907 in San Benito County. Gem-quality specimens are found nowhere else.

Miners at first assumed the blue stones were sapphires. But mineralogists soon determined they were a new discovery. All the gem material has been mined from the Benitoite Mine. What little exists lies in the hands of collectors.

GIA International Expedition Team

In order to prove the existence of Tibetan Andesine Mines for the second time, an international group had made a field expedition to the mining areas in Tibet from 26th September to 2nd October 2010. This international expedition group includes Ahmadjan Abduriyim (GAAJ), Brendan Laurs (GIA) and Thanong Leelawatanasuk (GIT) together with independent experts, i.e., Richard W. Hughes (well-known gemologist), Flavie Isatelle (research geologist, France) and Young Sze Man (Jewellery News Asia, Hong Kong) with the support from Christina Lu (M.P. Gem Corp.). The expedition began in Lhasa, the



capital of Tibet. The group finally arrived at Bailang and Zhalin mines which locate at the altitude of 4500 m near Shigatse city. In order to be sure that these gemstones do occur naturally, Ahmadjan and the other foreign experts were crossing the high maintains, observing and deducing the formation of the soil and the rock. The whole group had attempted to randomly select the digging sites around the area. Without assistance from any local villager, Richard W. Hughes , Brendan Laurs (GIA) and Thanong Leelawatanasuk (GIT) even came to undisturbed spot to dig pits and finally discovered the red andesines in the earth under the bush. The andesines found beneath the bush proved beyond doubt that the Tibetan red andesine mines are genuine. All the experts in the group confirmed that Tibetan red andesines are genuine. This field research settled the most important dispute on Tibetan red andesine in the gem stone markets worldwide.

If you look carefully above you will find the name of our Banquet Speaker, Brendan Laurs. More information may be found at <http://xz-tys.com/en/index.asp>. Of course, you skip reading and just come to the Banquet. I expect he will present a very interesting program.



Introduction of Tibet Andesine

Tibet Andesine is one of the rare Andesines. Just like its name --Tibetan Sunstone, it emits the red light like the sunlight. People have long been yearning for this mysterious and rare gemstone: not only because it is rare but also due to its birthplace where the altitude is highest and closest to the sky ----snow-covered Tibetan Plateau.

Starting from Lhasa, climbing over the 6,000-meters-high Mountain and passing the beautiful Yanghu Lake, then crossing over the perennial glacier-covered QinkangSang Mountain, we arrived at Jiangzi, Bailang county ,Shigatse City.

The mysterious Tibet Andesine was born in Jiangzi, Bailang County, Shigatse City. From the topographical map, this area is very flat surrounded by the mountains, which looks like a treasure basin. There is a very beautiful story told by the local Tibetan people : a snow lion from Himalayan passes here and finds it is a treasure land of Fengshui. Then it lies on this miraculous ground and finally it dies and changes into mountains and rivers. In the place where its head lies, it is found all kinds of mineral products and gemstones. Meanwhile, in the place where its tail lies, it changes into the land to produce barley and herbal medicines. The Tibet Andesine is buried in this place. People live a happy and peaceful life and enjoy the ample sunshine, pleasant climate all the year.

In the year 2005, Mr. Li Tong came to Shigatse and found this rare gemstone. He decided to promote it in year 2007. During the cooperation with the local villagers committees, Mr. Li Tong respected the local Tibetan people and gained their recognition and trust. At last, Mr. Li signed the long-term cooperation agreement with local village to help them to promote and sell this gemstone. What is more important, it is a good chance to show the gemstones to the people who love it all over the world.

Gem-quality feldspar has different kinds. Such as moonstone , amazonstone etc. People only find the stones like Tibet Andesine with red and transparent characters in Oregon in USA ,which is going to be exhausted. Tibet Andesine and Sun Stone from Oregon belong to the same serial of gemstone---Gem-quality feldspar with its rigidity 6.5-7.5, its consistency 2.65-2.75g and its refractive index 1.582-1.646. In most cases, it shows red or green colour, with scolopendra shape inclusion, black magnetite inclusion and two groups of complete cleavages.

Tibetan Andesine

Tibetan Andesine has a strong color effect. With the change of the source of light, it can reflect and show orange, pink, dark red, green, and other colors. What is more, it sometimes can display a kind of bright red colour just like the dancing flame. In a word, appreciated with different angle and under diverse lightings, she can give out the Indescribable beauty of colors. Tibetan Andesine makes a perfect expression of characteristics of light-- the coexistence different optical spectrums. As the lighting changes, sometimes she's passionate, sometimes she's cool charming; sometimes she's pure and simple, sometime she's filmy and mysterious; Sometimes she's refreshing and elegant, sometimes she's richly colourful and brightly beautiful. What is more, it sometimes reflects like the lighting of the star and Cat's eye.

<http://xz-tys.com/en/products.asp?page=1&>



Tibet Andesine raw material



Tibet Andesine raw material



Tibet Andesine polished products



Tibet Andesine polished products



Tibet Andesine polished products



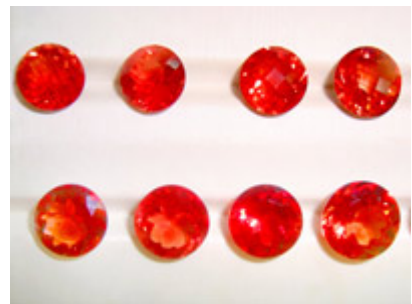
Tibet Andesine polished products



Tibet Andesine polished products



Tibet Andesine polished products



Tibet Andesine polished products

Book Report and Excerpt of Martin Ehrmann experiences in Mogok, Burma

I was looking for another article on Tibet and how tectonics affects the creation of gemstones when I landed on the Pala Gems site (www.palagems.com) and began reading a book in progress (on line) by Martin Ehrmann. Martin Ehrmann bought and sold gemstones and mineral specimens for a living. After 20 years in that profession he decided he had sufficient experience and knowledge to go to Mogok Burma (Myanmar) and the ruby mines. This is a fascinating on-line book that I recommend. Pala Gems encourages your feedback. (http://www.palagems.com/ruby_mines_mogok.htm). Some parts had me laughing almost as much as the participants in the bath tub episode. Jo Anna Ritchey, Editor

Note: U Khin Maung was a guide Martin Ehrmann hired on his first trip to Mogok and lived with his family in Mogok. Prince was a dog he "adopted" the previous year and was taken care of by U Khin Maung's sister.

The next day U Khin Maung and I took the plane to Mogok and he took me to his house. As we were about to go to our quarters, he said, "I want you to go in the back and have a look." Out back I found a complete outhouse building in the place where formerly there was only a sort of bamboo shield over the slit trench. I opened the door of the outhouse and there, right over the slit trench, a crudely built throne had been erected. U Khin Maung was standing right behind me grinning and beaming. I turned around and said to him, "Not

as comfortable as the Strand Hotel, but a great improvement. Thank you very much. Let me try it out.” So I sat on it and to my chagrin my feet didn’t reach the ground but were dangling in the middle of this high throne. It was built so high that it was actually more uncomfortable to use than it had been without it. However, I didn’t say anything and we walked out. The big surprise was still to come. When we got into my living room, which also served as my bedroom, I noticed at the side where the concrete wall was, there was a structure built with wooden planks of teakwood about six feet high and about eight feet long, the length of the wall. The depth was exactly 12 inches and I couldn’t figure out what it was except that through the window on the side, a new water pipe with a very primitive showerhead had been installed. I asked him what this damn thing was and he said, “This is your bathtub.” And I said, “How am I going to take a bath?” He said, “Well, we’ll heat the water and we will put it in there and you can go in there and bathe and then after you’re through bathing you can shower.” Of course what he meant by bathing is that I would wash myself standing up. What he had failed to realize was to fill this contraption to any height would take about 50 to 75, maybe 100 gallons of water which would have been impossible to heat on the little charcoal stoves they used for heating. However, that evening I wanted to take a bath anyway and I asked him to have some water heated. They heated about 5 or 6 pails of water and by the time we poured it into the tub the water was only about up to my shins. I thought it would take the whole night to fill it up any further so I said, “No, that’s all right, U Khin Maung. I will go in and take a bath the way it is.” In order to enter this “bathtub” I had to step on my chair and climb in. The water was warm and nice and slowly I started soaping and finally decided, oh, what the heck, I might as well sit down. I sat down which was all right at first; I just fitted in although it was very tight.

However, ten minutes later, the teakwood began to expand. By the time I was ready to get up it was impossible. It seemed that the harder I tried, the tighter the fit became and I started laughing until my laugh turned into hysteria. Nobody seemed to be in the room and nobody seemed to hear me. Finally I heard U Khin Maung. “What are you laughing about?” he asked. “Look, I am sitting down in the bottom trying to get up and I can’t,” I called. He said, “Oh, all right, I will help you.” In the meantime Prince caught my hysteria and began barking and barking. U Khin Maung then stood on the chair, leaned over, pulled, but it was impossible to budge me that way so without any warning there he was, standing behind me. He put his arms under my shoulders and tried to lift me up, but slipped and he was then sitting behind me. U Khin Maung was short and stocky. He had a waistline of at least 44 inches and his backside must have been twice the size of mine and there we were, both stuck and both laughing hysterically. I couldn’t move, neither could he. In the meantime, little Prince, still barking, began jumping and finally succeeded in joining us in the “tub” which only added to my problem because now I had to hold him up to protect him from drowning.

We must have been sitting there at least 20 minutes when we heard U Khin Maung’s younger brothers come in. When they discovered our predicament, first they laughed, too. Then they took Prince out and then finally with the help of some ropes they succeeded in getting me and then U Khin Maung out. Though we were still laughing, he said, “Well, this thing will have to go”. And the next morning my beautiful bathtub was dismantled, and I had to bathe under the pumps again. However, I had become somewhat adept at it and no longer heard the titters from the various houses in the neighborhood as I had previously. I knew that they had gotten used to a foreigner bathing the native way under a pump.

Text above was printed with permission of palagems.com.

CFMS FIELD TRIPS NORTH

By Jim Barton Chair

A CFMS FIELD TRIPS–NORTH FIELD TRIP TO TOPAZ MT. & DUGWAY GEODE BEDS

For the detailed write up for these field trips contact Jim Barton, CFMS-NORTH (contact info below), or go to the CFMS website www.cfmsinc.org for the full version.

- This trip is open to all rockhounds who agree to abide by the AFMS Code of Ethics, the directions of the field trip leader and practice safe rock hounding.
- Call the field trip leader beforehand to sign up and for further information.
- Remember to wear your name badge and sign in with the field trip leader.
- A Consent and Assumption of Risk Waiver of Liability form must be signed upon arrival at meeting site.

• **TRIP LOCATION:** Topaz Mt. and Dugway Geode Beds, Northwest of Delta Utah.

Vehicle access & parking: # 3 at Topaz Mt. & Dugway geode beds. - Good for most vehicles and RV’s, no specific handicap parking at Topaz Mt. and Dugway geode beds.

Collection or View Site: From a # 3 at the base of the Mt. to a # 7 at the Red Beryl site, ½ mile or more to site, difficult trails and ravines or water crossings. A # 4 at Dugway geode beds, flat ground, unpaved sections, handicap access with some help.

WHEN: April 5 through April 8 (Thu-Sun). This is a repeating site tour; you may show up and leave at any time during these 4 days. See schedule for optimum arrival dates.

MEMBER'S GUESTS: This is a public collecting area and anybody may camp and collect at the area concurrent with our activities. Those who choose to make the escorted trip to the Red Beryl site and convoy with us to the Dugway Geode Beds must sign the waiver.

COLLECTION MATERIAL: Topaz Crystals, Bixbite (Red Beryl), Pseudobrookite crystals, Hematite crystals, and Geodes.

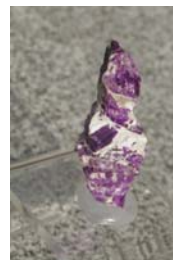
LEADER & CONTACT INFO: Please contact leader ahead of time:

Jim Barton, Home 916-773-0458, Cell 916-847-7321, Email geologist1@surewest.net

-Jim



Munich Show, Calcite



Munich Show Sugilite crystal

**AMERICAN LANDS ACCESS ASSOCIATION
PLAC/ALAA Joint Meeting
By John Martin & Dick Pankey**

The joint meeting of the Public Lands Advisory Committee and the American Lands Access Association was held following the Directors' meeting on Saturday. The meeting was open to everyone who is interested in and uses our public lands. We had very good attendance. Over 30 people attended including 7 officers and directors of ALAA attended.

Rudy Mendoza, the Field Rep for Congressman Devin Nunes of the 21st District (Visalia) talked about 3 bills currently before the House: (more details about these bills are on the ALAA web site - www.amlands.org)

- H.R.1581 Wilderness Study Area and Roadless Release Act of 2011
- H.R.758 National Monument Designation Accountability and Transparency Act of 2011
- H.R.199 Government Litigation Savings Act of 2011.

These three Bills are of great interest to our rockhounds and users of the public lands, and great importance to how we conduct our activities and our hobby. Mr. Mendoza told us the best way to support these bill is to send letters of support and your opinion to your local Congressman and Co-sponsors of the bill. Your letters make a difference and re important.

Because of the legislative load and Congress being bogged down with fiscal issues these bill have little chance of being passed this session and will be reintroduced at the new session in January.

Amy Granat told us about a laws suit that is being filed against the USFS concerning access and use by the elderly and disabled. This deals with road use, how management plans are developed and how it will affect all of us. This suit will affect how all Land Use Plans and Travel plans are developed and written for all USFS and BLM land.

Get involved and make a difference! - Dick

**The Mineralogical Society of Southern California
Proudly Presents the 47th Pacific Micro-mount Conference
January 27 to 29, 2012 at the
San Bernardino County Museum
2024 Orange Tree Lane, Redlands, CA**

FRIDAY, JANUARY 27, 2012

3:00-6:00 pm	On Site REGISTRATION, greeting friends and microscope time.
6:00-7:00 pm	Famous POTLUCK BUFFET Dinner. Please bring an hors d'oeuvre, salad, hot dish, dessert, etc.
7:00-8:00 pm	"WHAT'S NEW IN MINERALS" by Sugar White
8:00 pm pm	CONTRIBUTED TALKS AND MEMBER SLIDES

SATURDAY, JANUARY 28, 2012

8:00-9:00 am	DOORS OPEN, On Site REGISTRATION. Setting up scopes, filling "Give-away" and "Sales" Tables and greeting friends.
10:00 am	WELCOME, Introductions and Special Announcements.
10:15 am	Joe Marty: "Recent Mineral Finds in Arizona, California, Nevada, Utah, and Colorado"
NOON LUNCH	Subway sandwiches served at Museum. (No cost)
1:30 pm	VERBAL AUCTION, followed by silent auction of member donated materials.
3:15 pm	Bob Walstrom "Recent Mineral Finds in New Mexico"
6:00 pm	Buffe tdinner Cost \$5.00 Advance reservations necessary. (See Registration slip.), Served t Museum
7:00 pm	CONTRIBUTED TALKS AND MEMBER SLIDES

SUNDAY, January 29, 2012

	Field Trip, location to be determined
--	---------------------------------------

Registration Fee is \$15.00 before Conference, 20.00 at door.

Now is a good time and not too soon to make your advance registration for the 2012 Pacific Micromount Conference.

Registration: Please provide the names of all in your party. We like to have a name-tag waiting for everyone. In addition to Conference registration you will need to make a reservation if you plan to attend the delicious Saturday evening buffet dinner.

Note: While we encourage swapping of minerals during the Conference, we cannot allow participants to sell minerals inside the museum.

Nearby Motels

Redlands Motor Lodge, 1151 Arizona St.,

Good Nite Inn, 1675 Industrial Park Ave.,
Redlands (Alabama off-ramp) (909) 793-3723

Redlands Motor Lodges (Alabama off-ramp) (909) 793-3723

Starlight Motel, 1371 W. Redlands Blvd (Alabama off-ramp) (909) 792-3333

Super 8, 1160 Arizona St., Redlands, CA 92374 (Alabama off-ramp) 1-909-335-1612

Also, if you have an RV, a trailer, or van and are self-contained, you may camp at the outer edge of the Museum parking lot. Quite a few do this, and you will not be alone. (Use Registration form to let us know)

The San Bernardino County Natural History Museum is located just north of the 10 Freeway, at 2024 Orange Tree Lane, Redlands, California. (Take California Street exit and go north to Orange Tree Lane, then turn right to Museum Entrance.)

EARTH SCIENCE STUDY CAMPS By Marion Roberts, Chair

Hi there and Happy New Year to everyone. First of all I want to let you all know we have a new member on the Earth Science Committee. Susan Chaisson-Walblom has consented to join us, and as all of the other members. Davie Walblom also is forced into the works as well. The rest of the committee and I are pleased to welcome them aboard and have high expectations.

On to Zzyzx. We are looking to a very great experience this April 1st. We still have openings so get your application in and remember if you come in an R.V., you are guaranteed a spot, plus you save \$50.00 a person.

We are building eight folding tables for the Studies Center that will be available to us to use when we are at Zzyzx. I want to thank Jennifer Haley for a generous donation toward this project, also a thank you to Virginia Rotramel for salvaging some very good sets of legs for the tables. Also a big thank you to John Christiansen for his time and work helping to build them.

Lori and Jan, who we all know from the kitchen at Camp Paradise, will be doing the kitchen for us at Zzyzx this year because Eric has move on to a different aspect of food. He moved back to the coast and became a farmer, so now he grows it instead of cooking the Vegies.

We are adding two new disciplines this year, Gary Gooch will teach faceting and Betty Eggar will attempt to do some alternative casting, but will bring her enameling material in case the weather will not let us use the torch outside. My thanks to these two people for extending their efforts and talents to us.

Until next month, grind a rock and make something pretty.

-Marion



ZZYZX 2010



Ten Steps to Failure as a Leader by Don Ogden
Lessons learned from being an Indian Guide Nation Chief

We had a saying in Indian Guides that the job seeks the man, not visa versa. There you go, ho-ho-hoing all over the floor!

In any event, one of these days, you'll feel the long arm of responsibility reach out and tap you on the shoulder. Maybe they (those running the show for the moment; tomorrow they return to the ranks, or so the rhetoric goes) ask you to be on a Committee, a Committee Chair, Director, or Officer.

<p>Rule One If you really want to blow it as a leader, never plan for the future. Spend most of your time trying to deal with day-to-day problems and crises.</p>	<p>No. 7 Stick with the myth that the related club officers can solve everything. It makes him feel wanted to leave the problems to him and his staff.</p>
<p>Second Step Have no confidence in others, whether they're elected or appointed officers. Let them know you're keeping your eye on them.</p>	<p>No. 8 Never plan an agenda for meetings. People will love your carefree manner? Gavel? Opening? Committee & Project Reports? Introduction of speaker & guests? That's all for the birds.</p>
<p>No. 3 Refuse to delegate to any one. Keep the authority so they know who is boss.</p>	<p>No 9 Remain unaware of help, advise or counsel available in greater Rock'dom wisdom. Throw those letters from other clubs (CFMS and AFMS) in the waste basket. Our club is the thing, so who needs others opinions?</p>
<p>No. 4 Handle all the jobs -- or try anyway. That way you'll be sure they're done.</p>	<p>No. 10 Never mind keeping records. Membership, program, and club project records get out of date fast anyway. Live on cloud 9, let others do it.</p>
<p>No. 5 Above all avoid growing as your club expands. The old ways are proven, so you know the best.</p>	<p>P.S. We know you'll never do any of these things! These are merely positives reversed -- reverse them again and you have ten good ways to lead!</p>
<p>Number Six Step is essential if you want to fail as a leader: Ignore potential leadership in the ranks, especially if they're new. Even if they take training, stick with older members and play it safe.</p>	<p>Via CFMS Web Site</p>

Calendar of Events

January 21, 2012 Banquet and Officer Installation (see notice above)

January 21 - 22, 2012: EXETER, CA, Tule Gem & Mineral Society, Visalia, Exeter Veteran's Memorial Building, Highway 65, 324 N Kaweah Avenue, Hours: Sat. 10 - 5; Sun. 10 - 4
Website: www.tulegem.org

January 27 - 28, 2012: REDLANDS, CA, Mineralogical Society of Southern California/Micro-Mineralogists, Pacific Micromount Conference, San Bernardino County Museum, 2024 Orange Tree Drive, Hours: Fri. 4 - 10; Sat. 8 -10, *Field Trip on Sunday, January 29, 2012

January 1-31, 2012—QUARTZSITE, ARIZONA: Wholesale and retail show; **Desert Gardens RV Park;** 1055 Kuehn St.; I-10 Exit 17; Sun. 9-6 daily; free admission; crystals, minerals, rough, polished, jewelry, lapidary equipment. Web site: www.desertgardensrvpark.net

January 6-15, 2012—QUARTZSITE, ARIZONA: Annual show; **Tyson Wells Enterprises Inc.;** Tyson Wells Show Grounds; 100 W. Kuehn St.; Fri. 9-5 daily; free admission; rocks, gems, minerals, jewelry, silver and gold smithing, faceting, precious metals, lapidary tools, equipment, supplies Web site: www.tysonwells.com

January 26-12 2012—TUCSON, ARIZONA: Wholesale and retail show; **Eons Expos RLLLP;** 22nd St.; at I-10; Thu. 9-6 daily; free admission; minerals, fossils, dinosaurs, crystals, gems, jewelry, meteorites. Web site: www.22ndstreetshow.com

January 28-11, 2012—TUCSON, ARIZONA: Arizona Mineral & Fossil Show; Martin Zinn Expositions; Ramada Ltd.; 665 N. Freeway; Thu. 10-6 daily; free admission; more than 400 dealers, free shuttle among locations, Artists' Gallery at the Hotel Tucson City Center Web site: www.mzexpos.com

January 28-11, 2012—TUCSON, ARIZONA: Arizona Mineral & Fossil Show; Martin Zinn Expositions; Quality Inn-Benson Hwy.; 1025 E. Benson Hwy.; Thu. 10-6 daily; free admission; more than 400 dealers, free shuttle among locations, Artists' Gallery at the Hotel Tucson City Center. Web site: www.mzexpos.com

January 28-11, 2012—TUCSON, ARIZONA: Arizona Mineral & Fossil Show; Martin Zinn Expositions; The Hotel Tucson City Center; 475 N. Granada; Sat. 10-6 daily; free admission; more than 400 dealers, free shuttle among locations, Artists' Gallery at the Hotel Tucson City Center. Web site: www.mzexpos.com

January 28-11, 2012—TUCSON, ARIZONA: Arizona Mineral & Fossil Show; Martin Zinn Expositions; The Mineral & Fossil Marketplace; 1333 N. Oracle Rd.; Thu. 10-6 daily; free admission; more than 400 dealers, free shuttle among locations, Artists' Gallery at the Hotel Tucson City Center; Web site: www.mzexpos.com

January 28-February 12, 2012—TUCSON, ARIZONA: Annual show; The Rock Show; Kino Sports Complex; 2500 E. Ajo Way; Sat. 9:30-5:30 each day; free admission; rocks, jewelry, minerals, fossils, gemstones

February 4-07, 2012—TUCSON, ARIZONA. The Westward Look Show, 245 E. Ina Rd. Tucson, Arizona. 10:00-4:00 daily. Special Sunday Evening Program--check web site: <http://www.westwardminerals.com/>

February 10-13, 2012—TUCSON, ARIZONA Tucson Gem and Mineral Show at the Tucson Convention Center, 260 S. Church Street, Tucson, Arizona. 10:00-6:00 each day

March 3 & 4: ARCADIA, CA Monrovia Rockhounds, LA County Arboretum, 301 South Baldwin Avenue, Hours: 9:00 am – 4:30 pm Daily

July 13-15, 2012 Riverside, CA 2012 CFMS Gold and Gem Show & Convention., Municipal Auditorium, 3485 Mission Inn Avenue, Riverside, CA. 10:00-4:00 each day. General Admission: Adults - \$5.00, Seniors (60+) - \$4.00, Ages 12-17 (\$3.00) Kids under 12, Free with paid Adult.

OFFICERS

President Ann Meister *president@mineralsocal.org*.
 Vice President: Bruce Carter *programs@mineralsocal.org*
 Secretary: Bob Griffis *secretary@mineralsocal.org*
 Treasurer Jim Kusley *treasurer@mineralsocal.org*
 CFMS Director: Jo Anna Ritchey *bulletin@mineralsocal.org*
 Past President: Geoffrey Caplette

DIRECTORS

2010-2011

Leslie Ogg *webmaster@mineralsocal.org*
 Geoffrey Caplette
 Linda Elsnau
 Fred Elsnau

COMMITTEE CHAIRS

<i>Facilities</i>	Vacant
<i>Marketing/On Line Advertising</i>	Linda Elsnau <i>publicity@mineralsocal.org</i>
<i>Membership</i>	Jim Kusley (See Treasurer)
<i>Program and Education</i>	Bruce Carter See VP
<i>Show</i>	Vacant
<i>Webmaster</i>	Leslie Ogg <i>webmaster@mineralsocal.org</i>
<i>Bulletin Editor</i>	Jo Anna Ritchey <i>bulletin@mineralsocal.org</i>

2012 PACIFIC MICROMOUNT CONFERENCE COMMITTEE

Chairman: Bob Housley
 Speakers: Bob Housley
 Pre-registration: Bob Housley
 Electrical: Alan Wilkins
 Sales Table: Garth Bricker
 Give-away Table: Gene Reynolds
 Food: Ann Meister, Sugar White

About the Mineralogical Society of Southern California

Organized in 1931, the Mineralogical Society of Southern California, Inc. is the oldest mineralogical society in the western United States. The MSSC is a member of the California Federation of Mineralogical Societies, and is dedicated to the dissemination of general knowledge of the mineralogical and related earth sciences through the study and collecting of mineral specimens. The MSSC is a scientific non-profit organization that actively supports the geology department at Pasadena City College, Pasadena, California. Support is also given to the Los Angeles and San Bernardino County Museums of Natural History. The Bulletin of the Mineralogical Society of Southern California is the official publication of the Mineralogical Society of Southern California, Inc.

The MSSC meetings are usually held the second Friday of each month, January, February and August excepted, at 7:30 p.m. in Building E, Room 220, Pasadena City College, 1570 E Colorado Boulevard, Pasadena, California. The annual Installation Banquet is held in January, and the annual Picnic and Swap Meeting is held in August. Due to PCC holidays meetings may vary. Check the Society web for details. The Society also sponsors the annual Pacific Micro mount Symposium held at the San Bernardino County Natural History Museum during the last weekend of January.

Annual Membership dues for the MSSC are \$20.00 for an individual membership, \$30.00 for a family membership.

The Society's contact information:

Mineralogical Society of Southern California
1855 Idlewood Rd.,
Glendale, CA 91202-1053
E-mail: bgbrdpen@earthlink.net
Web: <http://www.mineralsocal.org>
The Mineralogical Society of California, Inc.

Permission to reproduce and distribute material originally published herein, in whole or in part, for non-commercial purposes, is hereby granted provided the sense or meaning of the material is not changed, the editor is notified, and the author's notice of copyright is retained. Permission to the material reprinted here in from other sources must be obtained them from the original source.

DISCLAIMER:

The Mineralogical Society of Southern California, Inc. is not responsible, cannot be held responsible or liable for any person's injuries, damages or loss of property at or traveling to or from any general meeting, board meeting, open house, field trip, annual show or any other MSSC event



Cabinet of european minerals from Wayne and Dona Leicht collection.
 Calcite - Malmberget Mine, Sweden (Peter Lyckberg collection)



Peridot picture from
 Wikipedia

Advance Registration Form

**PACIFIC MICROMOUNT CONFERENCE
January 28-29, 2012 (Field Trip on Sunday, Jan. 30)**

Registration \$15.00 per person by mail, \$20.00 at the door

No. of people _____	Amount \$ _____	Names

Friday Night Potluck Dinner

Bring your appetizer, salad, main dish, or dessert for an old-fashioned Potluck dinner. Your contribution will assure the success of the Potluck! (We will have the use of the kitchen facilities.)

Saturday Lunch (No cost to participants)

**Subway sandwiches will be ordered based on your advance selection
Turkey () Beef () Ham () Veggie ()**

Saturday Night Buffet Dinner

**\$5.00 per person – number of people attending: _____ Amount
\$ _____**

Field Trip on Sunday

**Are you interested in attending the field trip? Yes ___ No ___
Number of participants _____
Parking – Do you plan to park your self-contained
RV, trailer or van overnight at the Museum? Yes ___ No ___**

Total Amount \$ _____

**Send Payment to:
PMC Committee Chair
Robert Housley
210 S Catalina Ave. #3
Pasadena CA 91106**

Make check payable to MSSC

I plan on presenting a short contributed talk ()

**The topic will be: _____ Approximate length of
time _____**



2012 MSSC Membership Dues CLEARLY!

PLEASE PRINT

**Include
in
Roster?**

Name: _____

Yes
 No

Address:

Street _____

Apt _____

City _____

State _____

Zip _____

Yes
 No

Phone:

Home _____

Cell _____

Yes
 No

Email: _____

Note: **BULLETINS ARE NOW SENT BY EMAIL**

Optional Paper Version?

Yes
 No

Additional name(s) and relationship(s) if this is a family membership:

Our annual paper Roster will include only the information checked above, and only for the personal use of our members. **Membership Dues for One Year:**

\$20 Individual

\$30 Family

\$5 Student (under 21)

\$100 Platinum

Donations

Other

\$ _____

Make checks payable to MSSC and mail with this form to:
MSSC 1855 Idlewood Rd. Glendale, CA 91202-1053 **Questions?**
Contact Jim Kusely (MSSC Treasurer) at bgbrdpen@earthlink.net or
(818) 240-7022

**THE CALIFORNIA FEDERATION OF
MINERALOGICAL SOCIETIES, INC.**
DEDICATED TO THE ADVANCEMENT AND
ENJOYMENT OF THE EARTH SCIENCES

We invite you to join us at the Earth Science Seminar to be held at Soda Springs (Zzyzx) located approximately 50 miles northeast of Barstow, CA, off 1-15 at Zzyzx Rd. Facilities are rustic, dormitory style rooms with bed, mattress, and desk. Cleaning responsibilities lie with occupants. You must bring bed linen or sleeping bag and any creature comforts you may desire, i.e., lamp, throw rug, ice chest. RV parking is approximately 1/4 mile from the center and has no facilities of any kind. All restrooms and showers are located in separate buildings at the center and are communal. The Earth Science Committee retains the right to accept or deny applications as they deem appropriate. This area is designated by the Government as a Desert Studies Center; consequently, **NO PETS ARE ALLOWED.** A limited number of reservations are available and early application is recommended. Subject to change, these classes will be offered:

Lapidary	Wire Art
Silver Fabrication	Field Trips
Beading	Precious metal clay
Soft Stone Carving & Scrimshaw	Faceting
Advanced Wire Art	Alternative Casting

The fee for the week is \$375.00 per person and includes quarters or RV space, three meals per day, and classes. Additional charges may be assessed for material furnished by instructors.

IF YOU USE YOUR R.V. YOU CAN SAVE \$50.00

No cancellations after MARCH 17, 2012, *UNLESS A REPLACEMENT IS PROVIDED.*

A \$25.00 Administration Fee will be assessed for cancellations made prior to March 17, 2012.

Please complete the Registration Form and mail it with full payment, payable to CFMS.

For information only, call: Marion Roberts (209) 538-0197	ZZYZX CAMP DATE April 1 - April 8, 2012	Mail application to: Audrey Harvey 3363 Tuxford Place Thousand Oaks, CA 91360 (805) 492-2253
--	--	---

REGISTRATION FORM - DEADLINE March 1, 2012

Applications received after this date will be placed on a stand-by list and considered only when a vacancy exists.

Please use block printing:

Mr. Mrs. Ms _____

Mr. Mrs. Ms _____

Street _____ City _____ State _ Zip _____

Phone _____ Email _____

ROOM REQUEST FOR MEDICAL OR PHYSICAL REASONS; PLEASE DESCRIBE

SPECIAL DIETARY NEEDS: DIABETIC OTHER

EXPLAIN _____

Please fill in classes desired:

First Choice Second Choice Third Choice

A _____

B _____