



The 892nd Meeting of the Mineralogical Society of Southern California

December 14, 2012 7:30 pm

Pasadena City College
Geology Department, E-Building, Room 220
1570 E Colorado Blvd., Pasadena

In this issue: Program: To Be Announced

Program: To Be Announced	2
Meanderings from the President - Ann	2
Society History by Edwin V. Van Amringe	3
Minutes of 11/9/2012 Meeting	5
Mineral Museum at PCC by Martha A House	7
Open House JTE 12/15/2012	8
Conference Guidelines	9 & 16
Micro-Mount Advance Registration Form	10 & 15
Pacific Micro-Mount Conference Agenda	11 & 14
2013 Membership Dues Form	12-13
Fee Free Days at National Parks and Other	19
Calendar of Events	21
Society Officers	22
About MSSC	23

Program To Be Announced

MEANDERINGS FROM THE PRESIDENT by Ann Meister

As the year comes to an end, I would like to thank everyone who served in office, on a committee, or simply donated time or talent. Special thanks to Jo Anna Ritchey for producing a bulletin every month. That is the most time-consuming job. Special thanks also to Dr Bruce Carter for the fine programs this year, and we will continue trying to find your replacement or at least more assistance. Thank you to the officers and board members who are continuing in office and welcome to Dr George Rossman, our new Vice President; Pat Caplette and Patrick Stevens our new Board members; and Linda Elsna, our new bulletin editor. This is your Society and you are the folks who make it work. Thanks again.

We had an unexpected and exciting meeting guest in November: John Van Amringe, the son of Edwin Van Amringe who was one of the Society founders and who started the geology program at what was then Pasadena Junior College. Of great interest to several of us was that he had a bound copy of first 4 years of MSSC bulletins. That may be what is referenced in "Society History" reported below. It is also interesting that in Dr Bryan Wilbur's talk comparing PCC field trips of today with those of Dr. Van Amringe's time; one great locality is missing from the current PCC list. It was the first field trip of the MSSC -- which is described in the first bulletin in 1931 -- Crestmore Quarry, which essentially is no more. I remember visiting it on both MSSC and PCC geology field trips in the '50's and '60's. It had a fantastic number of minerals, including the distinctive blue calcite and crestmoreite. Ah, the "good old days" of field collecting.

Update on the MUSEUM ROBBERY: Four men are in custody for the robbery at the California Mining and Mineral Museum in Mariposa. They are "locals" of the Gold Country. Check the LA Times article of Nov 14.

REMEMBER --- DONATIONS ARE NEEDED FOR THE SILENT AUCTION AT THE BANQUET. THIS IS OUR ONLY MONEY RAISING ACTIVITY. PLEASE HELP SOCIETY HISTORY

From the American Mineralogist: Journal Mineralogical Society of America, Volume 22 No. 8 - August 1937 from a section titled Proceedings of Societies:
ANNUAL MEETING OF THE MINERALOGICAL SOCIETY OF SOUTHERN CALIFORNIA

Edwin V. Van Amringe, instructor in geology at Pasadena Junior College, was unanimously re-elected president of the Mineralogical Society of Southern California at the annual meeting held on the evening of June 12th [1937]. Other officers elected were: Franklin G. McIntosh of Beverly Hills, vice-president; Herman Abraham of Pasadena, secretary; and Kenneth N. Reed of Pasadena, treasurer. The new board of directors will consist of Earl L. Calvert, San Gabriel; Ernest W. Chapman, South Pasadena; Heber H. Clewett, San Dimas; Morris R. Ebersole, Hollywood; John M. Grieger, Pasadena; John A. Renshaw, Arcadia; and David B. Scott, Altadena. The business meeting was preceded by a banquet for 120, and a concert. A large variety of beautiful minerals and gems were exhibited by the members.

Extracts from the Annual Report of the President of
the Mineralogical Society of Southern California

On this, the sixth anniversary of our Society, I take pleasure in reviewing a little of the history of its founding and development. It was in the spring of 1931 that John Renshaw sent out about sixty-five announcements of an organization meeting. On the evening of June 23rd, forty people were gathered in the lecture room of the Pasadena Public Library, and I had the pleasure of addressing them on "mineral Collecting as a Hobby." The first issue of our Bulletin appeared in November, 1931, and continued regularly until it was combined with that of the Oregon society just three years later.

The Society progressed steadily in the two-year term of Ernest Chapman, and at the time of my election last June, meetings had totaled fifty-two, with thirty-two field trips. Our president had assisted greatly in the formation of the California Federation of Mineralogical Societies, which had its real beginning on "Mineralogy Day" at the San Diego Exposition, June 16, 1935. The first convention was held in Riverside on January 4th and 5th, 1935, with over five hundred attending. The officers then elected are still holding office. The second annual convention at Bakersfield on January 2nd and 3rd, 1937 was an outstanding success, and plans were laid for the San Francisco even on February 21st and 22nd of next year.

During the current year, we have enjoyed the following excellent lectures: In September Harry R. Newitt of Los Angeles spoke on "Mine Salting"; in October, W. L. Cozzens of the Fairchild Aerial Surveys illustrated aerial mapping with relation to geology; in November, Dr. H. J. Fraser of the California Institute of Technology told of his prospecting for gold in the Hudson Bay region; the January meeting featured Wendell Stewart's pictures of his trip to the gem cutters of Idar, Germany; in February Dr. H. L. Hatfield exhibited colored motion pictures of the western National Parks; Dr. Beno Gutenberg of the California Institute of Technology discussed his revolutionary work on

structure of the earth's crust in March; Alvin B. Carpenter in April told of his development of old Spanish mines in Mexico; and in May Roy Martindale of Glendale illustrated the determination of minerals by means of the microscope. Our field excursions for the year included a trip to the Stauffer borax mines near Frazier Mountain, an evening trip through the mills of the Columbia Steel Corporation at Torrance, a nine-day trip to the copper districts of southeastern Arizona, a visit to the Joshua National Monument and the Dale district, and a collecting trip to the Juniper Flat pegmatites and Winchester magnesite quarry.

Among other special events of the year I should mention the visit of Fred Young of Oregon in November, and the consequent publication of the special 120-page California number of our journal, "The Mineralogist"; the fine exhibit of minerals now in the Griffith Planetarium arranged by John Akers, Harold Reed, Morris Ebersole and John Grieger: the exhibit belonging to Wendell Stewart now on display in the Pasadena Public Library: and the sad deaths of two of our active members, Harry Hyatt of Corona and Dr. S. E. Sanger of Monrovia.

Edwin V. Van Amringe, President

MINUTES November 9, 2012 MSSC

The 891st meeting of the Mineralogical Society of Southern California was held on Friday, November 9, 2012, at Pasadena City College, Pasadena, CA. President Ann Meister brought the meeting to order at 7:33pm.

The regular business was postponed until after the presentation by our Guest Speaker, Dr. Bryan Wilbur, Professor of Geology at Pasadena City College (PCC). Dr. Wilbur has been teaching at PCC since 2006 and has researched some of the earliest fossils of the Paleozoic Era.

Dr. Wilbur's pleasant presentation centered around the history and legacy of Professor Edwin Van Amringe, first geology professor at PCC who, in 1926, began leading geology field trips to many locations in the U.S. Southwest. Professor Van Amringe was one of the founding members of the Mineralogical Society of Southern California (MSSC).

Van Amringe's excursions were the start of today's extensive Field Program at PCC, formerly known as Pasadena Junior College. In comparison, Dr. Wilbur's own geology field trips paralleled Van Amringe's to such places as Red Rock lake beds (19 to 7 million years old) which are tilted up and away due to ancient tectonic activity. The dry lake beds are still great places to find fossils! Van Amringe's notes and journals also reveal other field trips in the late 1920's and into the 1930's. His classes also visited Death Valley (Dante's View, Bad Water Basin, etc.), Santa Cruz Island, the San Gabriels and other locations in California and Nevada (Rhyolite, Goldfield). Dr. Wilbur noticed many similarities among students of then and now: interested, curious, and after a long day of work and research, hungry.

PCC's Field Program is one of the best in California, if not the nation. Field trips are an important part of geology and there is nothing to compare going out into the field, getting up close and personal with the rocks, minerals and fossils.

Dr. Wilbur was accompanied by Edwin van Amringe's son, Jack and PCC's Geology Department Dana Club president, Adam Arce. Dr. Wilbur took some questions after his presentation and Jack and Adam were available for further discussion during refreshments.

Regular Business:

Motion, Seconded and Carried (MSC) to approve Minutes of MSSC meeting of October 12, 2012.

Announcements:

- West Coast Mineral Show (Santa Ana) November 9 – 11, 2012
- Nevada Minerals & Books Open House (Tustin) - Nov 9 – 11, 2012
- JTI Open House - November 17, 2012 (Saturday 10am – 4pm)
- Nevada Mineral and Books will visit Oceanview Mine on November 18, 2012. Contact Walt Lombardo if interested.
- MSSC Installation Banquet - January 19, 2013. Guest speaker will be Rick Kennedy. There will be fund raising Silent Auction; bring your minerals, books, jewelry, etc. Gem Council may join again. Details TBA.
- Need submissions for GeoLiterary Resources section of the bulletin. Mineralogical Record magazine has a segment on stolen minerals. The website has interesting information: picturing stolen minerals, gallery of mineral art, old labels, etc.
- Trona was well attended, approximately 500 cars
- Next MSSC meeting will be at the regular schedule, December 14, 2012 at 7:30pm here at PCC.

Election

According to our existing By-Laws, October and November are nominations and November is also election of officers and January is installation but shall assume office as of January 1 and serve a 1 year term.

The slate is:

President	Ann Meister
Vice President	George Rossman
Secretary	Angie Guzman
Treasurer	Jim Kusely –proviso due to surgery, Ahni Dodge and Laura Davis to assist while Jim convalesces

Slate continued on page 7

Slate continued from page 6

CFMS Director	Jo Anna Ritchey
Directors	Geoff Caplette (Past President) Pat Caplette Bruce Carter
Directors Continued	Bob Housley Leslie Ogg Pat Stevens

Motion to close nominations by Ahni Dodge and seconded by Laura Davis. Motion carried, all in favor.

Motion to accept the slate of officers by acclamation made by Angie Guzman and seconded by Bob Housley (and others). Motion carried, all in favor.

Show and tell: Laura specimen stones from Moonstone Beach;
Pat Stevens brought beryl specimens from his personal collection.

Door prize drawing was won by Angie Guzman.

Adjourn 8:45pm

Refreshments

Submitted by Angie Guzman, MSSC Secretary

Mineral Museum at PCC by Martha A. House

The geology department serves a variety of students with diverse interests. One of the most important assets that we have available for our students is the Stanton Hill Mineralogical Museum. This resource, named for H. Stanton Hill, a professor at PCC from 1930-1973, was established in 1978. During the past 35 years, the collection has grown to over 3900 specimens from all over the world. During this time,

purchases by the Geology Department have been supplemented by alumni and faculty donations, as well as those made by friends of the museum. A full spectrum of mineral classes are represented with excellent examples from California locations. These specimens provide the basis for our current course in Mineralogy, which is taught in the museum, and also provides an important resource for community members; many elementary school groups have toured the museum over the years

Our mineralogy course focuses on hand specimen identification of minerals, culminating in a mineral exam that constitutes the identification of more than 200 mineral varieties. This study extends to an introduction to optical mineralogy in which students familiarize themselves with the use of petrographic microscopes in the identification of minerals in thin section.

We are currently hoping to expand our museum space and teaching collection to accommodate a growing interest in this subject. In this light, we anticipate expansion of the Mineralogical Museum and teaching space, as well as the acquisition of additional thin section materials, petrographic microscopes and camera/ video technology to accommodate group discussion of course materials and to give students a means to document their work with thin section specimens. As part of this endeavor, we are also planning on offering a revised Petrology course that focuses on hand specimen petrology of igneous rocks.

**An invitation for the members and friends of the
Mineralogical Society of Southern California
To attend an openhouse at
Jewel Tunnel Imports on
Saturday 15 December, 2012- 10 AM to 4PM**

**13100 Spring St., Baldwin Park, CA 91706, 626-814-2257
Map available at jeweltunnel.com
Refreshments will be served.**

Due to a typo on the original invitation, some members went on 11/17/2012. We are also invited to attend on 12/15/2012.



2013 MSSC Membership Dues

PLEASE PRINT CLEARLY!

Name:

· **Yes** **Address:** Street Apt

· **No**
City State Zip

· **Yes** **Phone:** Home Cell

· **No**
 · **Yes** **Email:** Note: **BULLETINS ARE NOW SENT BY EMAIL** Optional Paper Version? .
 · **No** **Yes**
· **No**

Our annual paper Roster will include only the

Additional name(s) and relationship(s) if this is a family membership:

information checked above, and only for the personal use of our members.

Membership Dues for One Year:

Make checks payable to MSSC and mail with

\$30 Family \$5 **Student** (under 21)
Donations
 \$100 Platinum **Other** \$

this form to:

MSSC 1855 Idlewood Rd. Glendale, CA 91202-1053

Questions?

Contact Jim Kusely (MSSC Treasurer) at bgbrdpen@earthlink.net or (818) 240-7022

**The Mineralogical Society of Southern California
Proudly Presents the 48th Pacific Micro-mount Conference
February 1 and 2, 2013 at the
San Bernardino County Museum
2024 Orange Tree Lane, Redlands, CA**

FRIDAY, FEBRUARY 1

**3:00-6:00 PM On Site REGISTRATION, greeting friends and microscope time
6:00-7:00 Famous POTLUCK BUFFET Dinner**

**7:00-8:00 PM Jerry Baird
“New Minerals and how I Photograph Them”
Followed by
CONTRIBUTED TALKS AND MEMBER PHOTOS**

SATURDAY, FEBRUARY 2

**8:00-9:00 AM DOORS OPEN, On Site REGISTRATION.
Setting up scopes, filling “Give-away” and
"Sales" Tables, and greeting friends.
10:00 AM WELCOME, Introductions and Special Announcements.**

**10:15 AM – Joe Marty
“Recent Collecting in the Colorado Plateau: New Minerals and New Photos”**

**NOON LUNCH. Subway sandwiches served at Museum. (No cost)
1:30 PM VERBAL AUCTION, followed by silent auction of member donated materials.**

**3:15 PM – Paul Adams
“Mineralogy and History of the Silver Coin Mine”**

6:00 PM BUFFET DINNER Served at Museum.

**7:00 PM
CONTRIBUTED TALKS AND MEMBER PHOTOS**

SUNDAY, February 3

Field Trip to a site to be determined

**Friday night Potluck –Please bring an hors d’oeuvre, salad, hot dish, dessert, etc.
Saturday lunch – Subway sandwiches (No cost to attendees.)
Saturday night Buffet dinner is \$5.00. Advance dinner reservations necessary. (See Registration form.)**

Registration Fee is \$15.00 before Conference, 20.00 at door.

Conference Guidelines

Now is a very good time to make your advance registration for the 2012 Pacific Micromount Conference.

Registration: Please provide the names of all in your party. We like to have a name-tag waiting for everyone. In addition to Conference registration you will need to make a reservation if you plan to attend the delicious Saturday evening buffet dinner.

Nearby Motels

**Redlands Motor Lodge, 1151 Arizona St.,
Park Ave.,
Redlands (Alabama off-ramp)
909-798-2432**

909-793-3723

**Good Nite Inn, 1675 Industrial
Redlands (Alabama off-ramp)**

**Starlight Motel, 1371 W. Redlands Blvd.,
Redlands
Redlands**

(Alabama off-ramp)

Super 8, 1160 Arizona St.,

(Alabama or Tennessee off-ramp)

909-335-1612

909-792-3333

Also, if you have an RV, a trailer, or van and are self-contained, you may camp at the outer edge of the Museum parking lot. Quite a few do this, and you will not be alone. (Use Registration form to let us know)

The San Bernardino County Natural History Museum is located just north of the 10 Freeway, at 2024 Orange Tree Lane, Redlands, California. (Take California Street exit and go north to Orange Tree Lane, then turn right to Museum Entrance.)



Advance Registration Form

PACIFIC MICROMOUNT CONFERENCE

February 1-2, 2013 (Field Trip on Sunday, Feb. 3)

Registration \$15.00 per person by mail, \$20.00 at the door

No. of people _____

Amount \$ _____
Names

Friday Night Potluck Dinner

Bring your appetizer, salad, main dish, or dessert for an old-fashioned Potluck dinner. Your contribution will assure the success of the Potluck! (We will have the use of the kitchen facilities.)

Saturday Lunch (No cost to participants)

Subway sandwiches will be ordered based on your advance selection

Turkey () Beef () Ham () Veggie ()

Saturday Night Buffet Dinner

\$5.00 per person – number of people attending: _____ Amount \$ _____

Field Trip on Sunday

Are you interested in attending the field trip? Yes ___ No ___

Number of participants _____

Parking – Do you plan to park your self-contained
RV, trailer or van overnight at the Museum? Yes ___ No ___

Total Amount \$ _____

Send Payment to:
PMC Committee Chair
Robert Housley
210 S Catalina Ave. #3
Pasadena CA 91106

Make check payable to MSSC

I plan on presenting a short contributed talk ()

The topic will be: _____ Approximate length of time _____



2013 MSSC Membership Dues

PLEASE PRINT CLEARLY!

Name:

Address: Street

City

State

Phone: Home

Cell

· Yes

· No

· Yes

· No

· Yes

· No

Email: Note: **BULLETINS ARE NOW SENT BY EMAIL** Optional F

Additional name(s) and relationship(s) if this is a family membership:

Our annual paper Roster will include only the

information checked above, and only for the personal use of our members.

Membership Dues for One Year:

\$20 Individual

\$30 Family

\$100 Platinum

Donations

Other \$

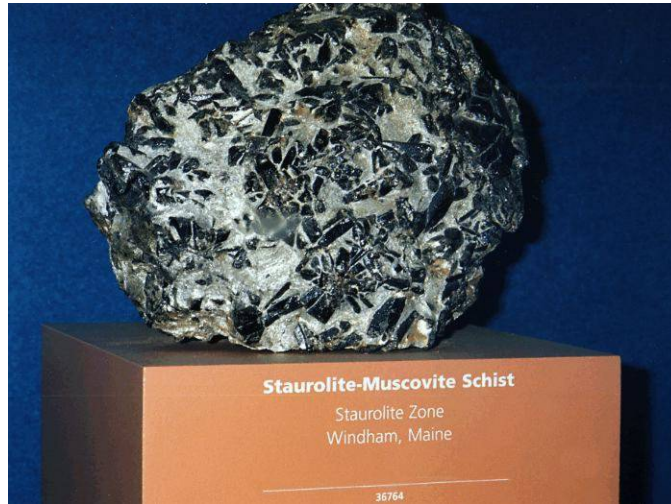
Make checks payable to MSSC and mail with

this form to:

MSSC 1855 Idlewood Rd. Glendale, CA 91202-1053

Questions?

Contact Jim Kusely (MSSC Treasurer) at bgbrdpen@earthlink.net or (818) 240-7022



The uncommonly large black crystals in this specimen of schist are staurolite, also a common metamorphic mineral in southern Maine. They are presented in a groundmass of fine-grained, silvery muscovite mica. via Maine.gov, Bureau of Geology



The Montana Sapphire Butterfly in the gem collection of the Smithsonian Institution.

West Coast
GEM & MINERAL SHOW

Holiday Inn - Orange County Airport
2726 S. Grand Ave., Santa Ana, CA 92705
(Take 55 Fwy exit 8 for Dyer Rd. to S. Grand Ave.)

MAY 17-19, 2013

75 Top Quality Dealers!

*Minerals • Fossils • Gemstones • Jewelry
Beads • Decorator Pieces • Meteorites
Lapidary • Metaphysical Supplies*

**FREE ADMISSION • FREE PARKING
WHOLESALE • RETAIL • OPEN TO THE PUBLIC**

Show Hours: Fri. & Sat. 10 - 6 • Sun. 10 - 5

LLD Productions, Inc. in cooperation with
Martin Zinn Expositions, L.L.C., P.O. Box 665, Bernalillo, NM 87004
Fax: (303) 223-3478, mzexpos@gmail.com., www.mzexpos.com



*Tourmaline
Jeff Scovil Photo©*

MSSC Advertisement Policy: Mineral-related ads have always been acceptable in the bulletin. Below is the price per month

Business Card	\$5.00
1/3 page	\$10.00
1/2 page	\$20.00
Full Page	\$35.00

In addition, any advertiser who purchases 12 months of space in advance will receive a discount of 12 months for the price of 10 months. The copy for the ads should be e-mailed to the editor at bulletin@mineralsocal.org and the payment should be sent to the MSSC Treasurer at 1855 Idlewood Road, Glendale, CA 91202-1053. The Bulletin Editor reserves the right to decline requests for space if material submitted is judged to be inappropriate

Salazar Announces Fee Free Days at National Parks, Other Public Lands for 2013

November 13, 2012 By [newsblog](#) via DesertUSA

WASHINGTON— Secretary of the Interior Ken Salazar today announced dates in 2013 ranging from Dr. Martin Luther King Jr. Day to Veterans Day when more than 2,000 national parks, national forests, national wildlife refuges, and other federal lands will offer free admittance to everyone.

“Our national parks, national wildlife refuges, national forests and other public lands offer every American a place to enjoy outdoor recreation, learn about our nation’s history and culture, and restore our souls and spirits by connecting with the natural beauty and wildness of our land,” Salazar said. “By providing free admission, we are putting out an invitation to all Americans to visit and enjoy these extraordinary treasures that belong to all our people.”

The National Park Service and U.S. Fish & Wildlife Service will waive their entrance fees and the Bureau of Land Management, the U.S. Forest Service, and the Bureau of Reclamation will waive their standard amenity fees on September 28 for National Public Lands Day and from November 9 to 11 for Veterans Day weekend.

The National Park Service will also waive entrance fees on January 21 for Dr. Martin Luther King, Jr. Day, from April 22 to 26 during National Park Week, and on August 25 to celebrate the agency’s 97th birthday.

The U.S. Fish & Wildlife Service will also waive entrance fees on January 21 for Dr. Martin Luther King, Jr. Day and on October 13 for National Wildlife Refuge Day.

The Bureau of Land Management will also waive standard amenity fees on January 21 for Dr. Martin Luther King, Jr. Day.

The U.S. Forest Service will also waive standard amenity fees on January 21 for Dr. Martin Luther King, Jr. Day and on June 8 for Get Outdoors Day.

“National parks and other public lands are becoming increasingly important for both our mental and physical health,” said National Park Service Director Jonathan B. Jarvis. “In our fast-paced world, they provide places for good, old-fashioned social networking with others – places where we can relax and unwind where we can experience new and different things, and where we can easily share thoughts and communal activities.”

Tourism and outdoor recreation are also powerful economic engines in communities across the country. Recreation on federal lands in 2009 provided 440,000 jobs and contributed \$55 billion to the economy.

The fee waiver does not cover expanded amenity or user fees for things such as camping, boat launches, transportation, or special tours.

Active duty military members and their dependents are eligible for a free annual pass that provides entrance to lands managed by the National Park Service, U.S. Fish & Wildlife Service, Bureau of Land Management, Bureau of Reclamation, and the U.S. Forest Service. The America the Beautiful National Parks and Federal Recreational Lands Pass Program also offers a free lifetime pass for people with disabilities, a \$10 lifetime senior pass for those age 62 and over, and an \$80 annual pass for the general public.

America’s great outdoors should be experienced by everyone,” said Salazar. “Our fantastic network of public lands provides world class recreational opportunities, the chance to view abundant wildlife in natural habitats, sites that showcase our nation’s rich and diverse history, and some of the most incredible scenery found anyway. The fee free days will give both first time and repeat visitors a good reason to spend time in these extraordinary places.”

Date	Event	Agency Participating
Jan. 21, 2013	Martin Luther King Jr. Day	National Park Service Fish & Wildlife Service Bureau of Land Management US Forest Service
Apr. 22 – 26, 2013	National Park Week	National Park Service
June 8, 2013	Great Outdoors Day	US Forest Service
Aug. 25, 2013	National Park Service Birthday	National Park Service
Sept. 28, 2013	National Public Lands Day	National Park Service Fish & Wildlife Service Bureau of Land Management Bureau of Reclamation US Forest Service

Oct. 13, 2013	National Wildlife Refuge Day	Fish & Wildlife Service
Nov. 9 – 11, 2013	Veterans Day weekend	National Park Service Fish & Wildlife Service Bureau of Land Management Bureau of Reclamation US Forest Service

Source: DOI

Calendar of Events

December 7 - 9, 2012: SAN BERNARDINO, CA

Orange Belt Mineralogical Society
Western Regional Little League Ball Park
6707 Little League Drive
Hours: 9 am to Dusk daily

January 1-31, 2013—QUARTZSITE, ARIZONA: Wholesale and retail show; Desert Gardens RV Park; Desert Gardens RV Park; 1055 Kuehn St.; Mon. 9-dusk, Sun. 9-dusk; free admission; crystals, minerals, rough, polished, jewelry, lapidary equipment; contact Sharon (manager), 1055 Kuehn St., Quartzsite, AZ

2-17—TUCSON, ARIZONA: Wholesale and retail show; The Rock Show; Kino Sports Complex; 2500 E. Ajo Way; Daily 9:30-5:30; free admission

March 2 - 3, 2013: ARCADIA, CA

Monrovia Rockhounds
The Arboretum & Botanic Gardens
301 Baldwin Avenue (Ayers Hall)
Hours: 9:00 - 4:30 daily

OFFICERS

President	Ann Meister	president@mineralsocal.org
Vice President	Bruce Carter	programs@mineralsocal.org
Secretary	Angie Guzman	secretary@mineralsocal.org

Treasurer	Jim Kusely	treasurer@mineralsocal.org
CFMS Director	Jo Anna Ritchey	bulletin@mineralsocal.org

Past Pres. Geoffrey Caplette

DIRECTORS

2010-	Geoffrey Caplette	
2010-	Leslie Ogg	webmaster@mineralsocal.org
2010-	Linda Elsnau	publicity@mineralsocal.org
2010-	Fred Elsnau	

COMMITTEE CHAIRS

Facilities	Vacant
Publicity	Linda Elsnau (See Director)
Membership	Jim Kusely (See Treasurer)
Program and Education	Bruce Carter (See VP)
Show	Vacant
Webmaster	Leslie Ogg (see Director)
Bulletin Editor	Jo Anna Ritchey (See CFMS)

2013 PACIFIC MICROMOUNT CONFERENCE COMMITTEE

Chairman	Bob Housley
Speakers	Bob Housley
Pre-registration	Bob Housley
Electrical	Alan Wilkins
Sales Table	Garth Bricker
Give-away Table	Gene Reynolds
Food	Ann Meister & Sugar White

About the Mineralogical Society of Southern California

Organized in 1931, the Mineralogical Society of Southern California, Inc. is the oldest mineralogical society in the western United States. The MSSC is a member of the California Federation of Mineralogical Societies, and is dedicated to the dissemination of general knowledge of the mineralogical and related earth sciences through the study and collecting of mineral specimens. The MSSC is a scientific non-profit organization that actively supports the geology department at Pasadena City College, Pasadena, California. Support is also given to the Los Angeles and San Bernardino County Museums of Natural History. The Bulletin of the Mineralogical Society of Southern California is the official publication of the Mineralogical Society of Southern California, Inc.

The MSSC meetings are usually held the second Friday of each month, January, February and August excepted, at 7:30 p.m. in Building E, Room 220, Pasadena City College, 1570 E Colorado Boulevard, Pasadena, California. The annual Installation Banquet is held in January, and the annual Picnic and Swap Meeting is held in August. Due to PCC holidays, meetings may vary. Check the Society website for details.

The Society also sponsors the annual Pacific Micromount Symposium held at the San Bernardino County Natural History Museum during the last weekend of January.

Annual Membership dues for the MSSC are \$20.00 for an individual membership, \$30.00 for a family membership. The Society's contact information: Mineralogical Society of Southern California 1855 Idlewood Rd., Glendale, CA 91202-1053 E-mail: bgbrdpen@earthlink.net Web: <http://www.mineralsocal.org> The Mineralogical Society of California, Inc.

Permission to reproduce and distribute material originally published herein, in whole or in part, for non-commercial purposes, is hereby granted provided the sense or meaning of the material is not changed, the editor is notified, and the author's notice of copyright is retained. Permission to the material reprinted here in from other sources must be obtained them from the original source.

DISCLAIMER: The Mineralogical Society of Southern California, Inc. is not responsible, cannot be held responsible or liable for any person's injuries, damages or loss of property at or traveling to or from any general meeting, board meeting, open house, field trip, annual show or any other MSSC event